

JRG Valves

# JRGURED Combi

Technical Documentation



# JRGURED Combi



- 1 Valve cover
- 2 Pressure spring
- 3 Bronze body
- 4 O-Ring
- 5 Screw collar
- 6 Filter cup
- 7 Filter tube
- 8 Insert
- 9 Drain valve
- 10 Cap

The JRGURED Combi domestic water station is a multiple fitting consisting of a fine filter and a pressure-reducing valve.

## Function

The pressure of water from the main supply network may have to be reduced to a value suitable for the customer's system.

The reducing valve in the fitting decreases the inlet pressure to a lower, constant outlet pressure.

Repair work etc. on the main distribution network can result in suspended particles such as scale, rust, sand and so on passing by way of the building tee-off into the domestic piping-system.

The fine filter, situated ahead of the pressure reducing valve intercepts suspended material larger than 100µm. The complete following domestic house installation will be protected at it's best.

## Installation requirements

The installation of the JRGURED combi domestic water station is covered by SVGW guidelines W3, issued 1992. Relevant regulations of the local water supply utility must be observed.

## Resetting the pressure-reducing valve

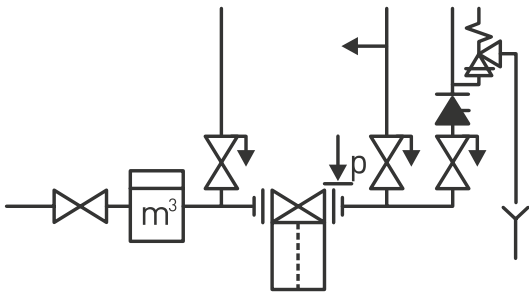
Any person who alters the factory-set pressure does so entirely on their own responsibility (see installation instructions).

## Notes

Repairs on the JRGURED Combi domestic water station must not be attempted. For maintenance of the fine filter, the maintenance instructions must be observed.

The inserted fine filter in the JRGURED Combi is only for retaining ingested suspended particles. It does in no way replace any desired or necessary water treatment (softening, sterilisation, etc.).

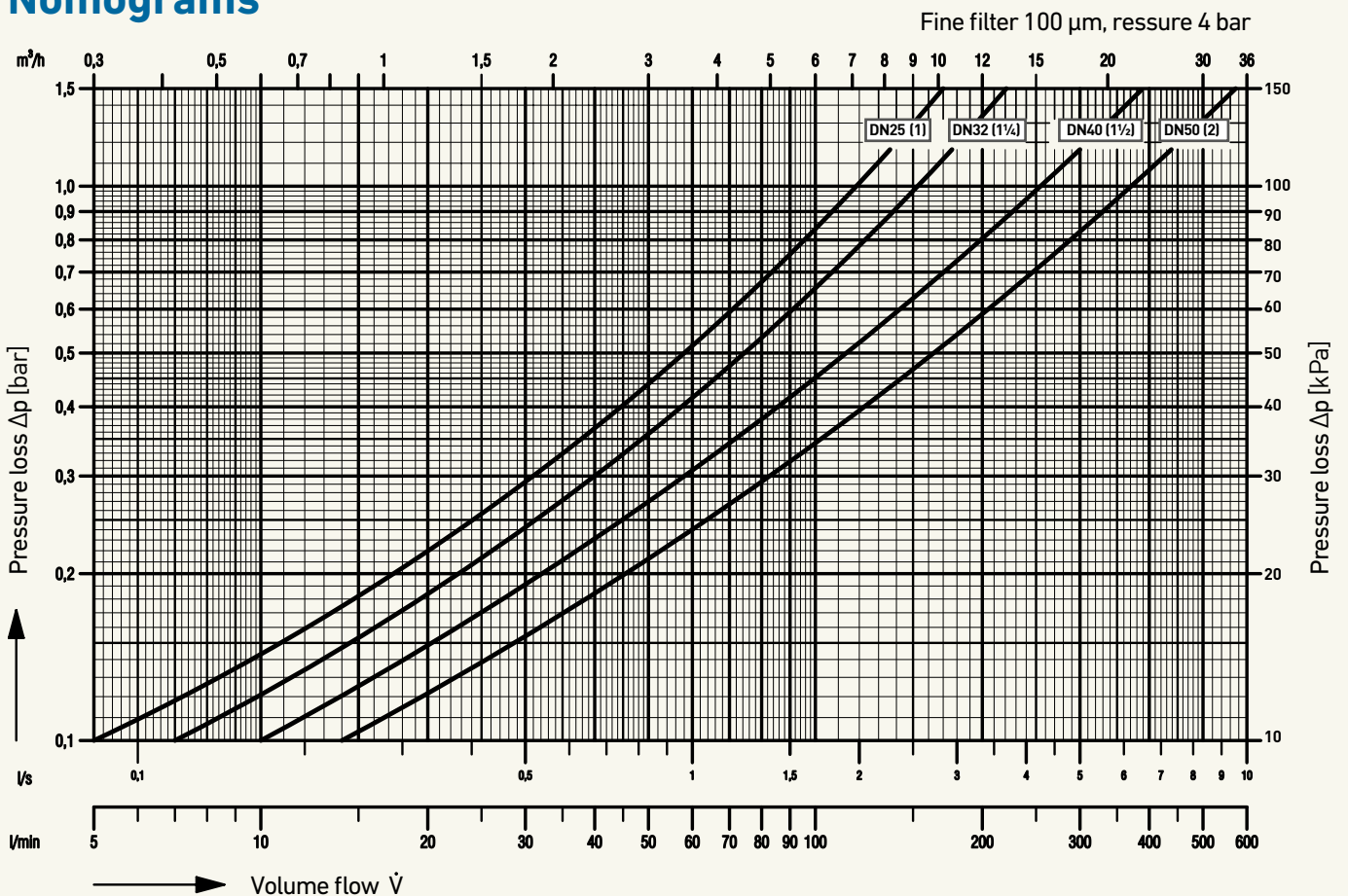
## Installation examples



## Advantages

- Body made of gunmetal
- Two pressure ranges available:
  - PN 16 Filter cup made of high quality plastic, transparent and filter tube of nylon, usable up to 50°C
  - PN 25 Filter cup made of gunmetal and filter tube of nylon
- All water carrying parts made of gunmetal, stainless steel or plastic
- Filter cup easy dismantled
- Filter cup with integrated drain valve
- Drain valve with house spout
- Low valve top height
- Same size as JRGURED 1130
- Tested and approved by SVGW

## Nomograms



# JRGURED Combi



## JRGURED Combi house water station, PN 16 - 4 bar

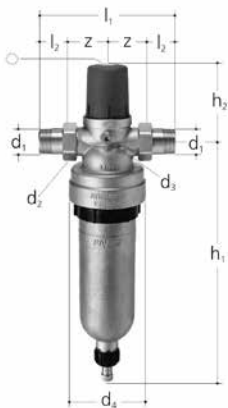
Combined pressure reducing valve with fine filter, PN 16  
 Connections with male thread BR1 according EN ISO 228-1, without brass screw connections, threaded connection for manometer valve closed with plug.  
 Gunmetal body, plastic cover top, slide and seat made of stainless steel, membrane and valve gasket made of EPDM, transparent plastic filter cup with drain cock, fine filter element 100 µm, threaded ring and key. Factory setting 4 bar. Screw connections see 8201, plug see 5149.080, filter cup 1848/1849, fine filter element 1838/1839, fine filter key 8127.000, transparent filter cups have to be protected from UV rays and aggressive surroundings/influences.

It's required to use only AFM 34 gaskets.

\* AFM 34 gaskets cannot be oiled neither be greased

Secondary pressure 200-600 kPa (2-6 bar), Tmax 30°C

GN (inch)	DN (mm)	JRG Code	GF Code	Weight (kg)	d2 G (inch)	d3 Rp (inch)	d4 (mm)	h1 (mm)	h2 (mm)	l1 (mm)	z (mm)	⊙
1	25	<b>1353.025</b>	<b>350 690 501</b>	3.950	1 ¼	¼	122	390	110	100	50	6
1 ¼	32	<b>1353.032</b>	<b>350 690 502</b>	4.360	1 ½	¼	122	393	120	120	60	6
1 ½	40	<b>1353.040</b>	<b>350 690 503</b>	6.100	1 ¾	¼	130	403	157	146	73	8
2	50	<b>1353.050</b>	<b>350 690 504</b>	7.660	2 ¾	¼	130	415	172	176	88	8



## JRGURED Combi house water station, PN 25 - 4 bar

Combined pressure reducing valve with fine filter, PN 25  
 Connections with male thread BR1 accord. EN ISO 228-1, with brass screw connections, AFM 34\* gaskets, threaded connection for manometer valve closed with plug.  
 Gunmetal body, plastic cover top, slide and seat made of stainless steel, membrane and valve gasket made of EPDM, gunmetal filter cup with drain cock, fine filter element 100 µm, threaded ring and key.

Factory setting 4 bar. Screw connections see 8201, plug see 5149.080, filter cup 1848/1849, filter element 1838/1839, fine filter key 8127.000

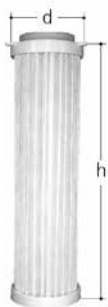
\* AFM 34 gaskets cannot be oiled neither be greased

Secondary pressure 200-600 kPa (2-6 bar), Tmax. 30°C

GN (inch)	DN (mm)	JRG Code	GF Code	Weight (kg)
1	25	<b>1360.400</b>	<b>350 690 601</b>	7.220
1 ¼	32	<b>1360.480</b>	<b>350 690 602</b>	7.820
1 ½	40	<b>1360.560</b>	<b>350 690 603</b>	9.670
2	50	<b>1360.640</b>	<b>350 690 604</b>	11.000

GN (inch)	DN (mm)	d1 R (inch)	d2 G (inch)	d3 Rp (inch)	d4 (mm)	h1 (mm)	h2 (mm)	l1 (mm)	l2 (mm)	z (mm)	⊙
1	25	1	1 ¼	¼	122	390	110	167	34	50	6
1 ¼	32	1 ¼	1 ½	¼	122	393	120	196	38	60	6
1 ½	40	1 ½	1 ¾	¼	130	403	157	223	39	73	8
2	50	2	2 ¾	¼	130	415	172	269	47	88	8

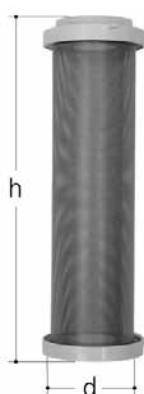
# Spare parts/Accessories



## Filter element

Made of PES fleece, for water up to 30°C  
Suitable for: 1350–1363, 1830-1846

d (mm)	JRG Code	GF Code	Weight (kg)	h (mm)	µm
70	<b>1838.005</b>	<b>350 590 002</b>	0.100	250	5
70	<b>1838.020</b>	<b>350 590 102</b>	0.140	250	20
70	<b>1838.050</b>	<b>350 590 202</b>	0.100	250	50
70	<b>1838.150</b>	<b>350 590 302</b>	0.140	250	150
70	<b>1838.350</b>	<b>350 590 402</b>	0.140	250	350



## Filter element

Stainless steel (V4A), for water up to 70°C. Can be washed.  
For JRG 1350–1363, 1830-1846

d (mm)	JRG Code	GF Code	Weight (kg)	h (mm)	µm
70	<b>1839.001</b>	<b>350 590 502</b>	0.120	250	1000
70	<b>1839.050</b>	<b>350 588 202</b>	0.435	250	50
70	<b>1839.100</b>	<b>350 590 514</b>	0.250	250	100



## Fine filter key

Made of plastic, for screw collar of the filter cups 1830/1849

d (mm)	JRG Code	GF Code	Weight (kg)	h (mm)
113	<b>8127.000</b>	<b>355 591 401</b>	0.080	190

# Connection pieces

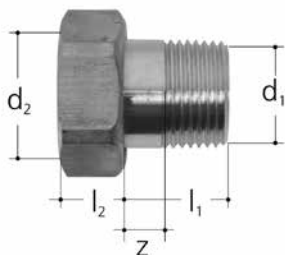
## Union with male thread



Made of brass, with long male thread, as length adjustment by changing to other pressure reducing valves

GN (inch)	DN (mm)	JRG Code	GF Code	Weight (kg)	d1 R (inch)	d2 G (inch)	l1 (mm)	l2 (mm)	Z (mm)	O-Ring
1	25	<b>8299.400</b>	<b>355 583 801</b>	0.440	1	1 ¼	138	8	18	09 294 04
1 ¼	32	<b>8299.480</b>	<b>355 584 001</b>	0.760	1 ¼	1 ½	165	9	19	09 294 05
1 ½	40	<b>8299.560</b>	<b>355 584 201</b>	1.060	1 ½	1 ¾	175	10	21	09 294 06
2	50	<b>8299.640</b>	<b>355 584 401</b>	1.160	2	2 ¾	122	11	25	09 294 12

## Union with male thread



Made of brass, with conical male thread and gasket suitable to 1300-1333, 1350-1363, 2100-2110, 2113, 2130-2140, 2143, 8201.402 suitable to 9601.040, 9603.040, 9606.040, 9695.480

GN (inch)	DN (mm)	JRG Code	GF Code	Weight (kg)	d1 R (inch)	d2 G (inch)	l1 (mm)	l2 (mm)
1	25	<b>8201.400</b>	<b>350 331 901</b>	0.180	1	1 ¼	34	8
1 ¼	32	<b>8201.480</b>	<b>350 332 001</b>	0.290	1 ¼	1 ½	38	9
1 ½	40	<b>8201.560</b>	<b>350 332 101</b>	0.360	1 ½	1 ¾	39	10
2	50	<b>8201.640</b>	<b>350 332 201</b>	0.620	2	2 ¾	47	11

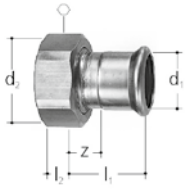
## Adapter piece



Made of gunmetal/brass, with gasket, for exchanging JRG 1400 with JRGURED 1303

GN (inch)	DN (mm)	JRG Code	GF Code	Weight (kg)	d1 G (inch)	d2 G (inch)	l1 (mm)	l2 (mm)
1	25	<b>1136.400</b>	<b>350 496 901</b>	0.270	1 ¼	1 ¼	40	11
1 ¼	32	<b>1136.480</b>	<b>350 497 001</b>	0.408	1 ½	1 ½	53	12
1 ½	40	<b>1136.560</b>	<b>350 497 101</b>	0.547	1 ¾	1 ¾	58	12
2	50	<b>1136.640</b>	<b>350 497 201</b>	1.630	2 ¼	2 ¾	58	14

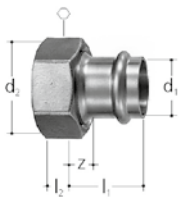
# Connection pieces



## Screw connection for Mapress press-fitting system BR 1

With press-socket and loose nut, flat sealed, fits 1303, 1313, 1323, 1333, 1353, 1363, 1611, 1621, 2100-2140, 2161, 3600, 5010, 5011, 5080, 5081, 5211, 5281, 6320

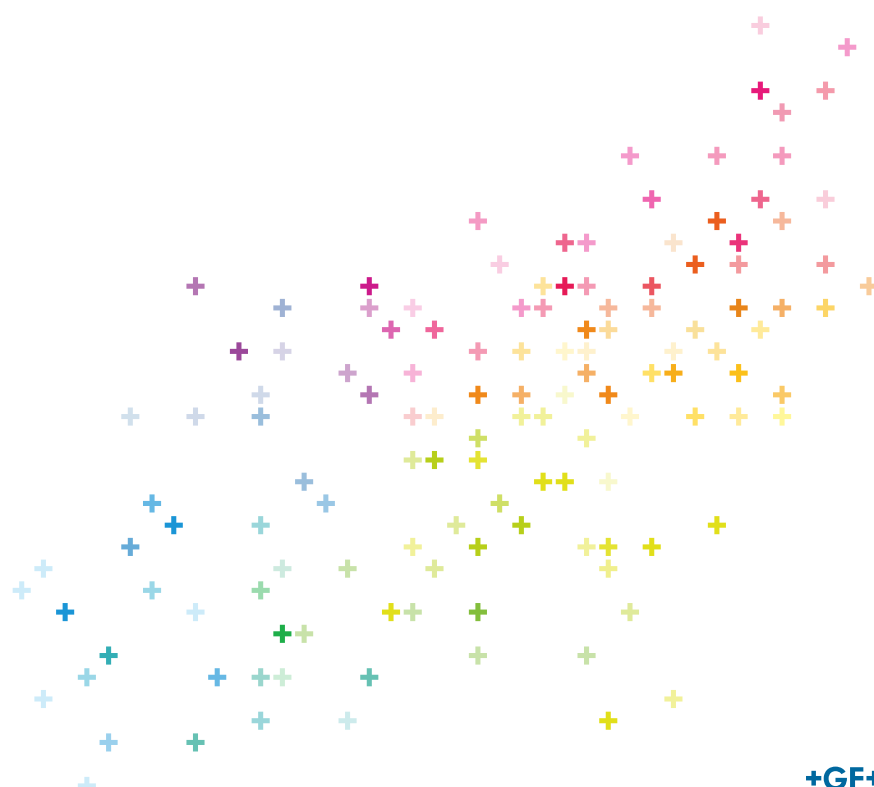
d1 (mm)	DN (mm)	JRG Code	GF Code	Weight (kg)	d2 G (inch)	l1 (mm)	l2 (mm)	z (mm)	⬡	O-Ring
28	25	<b>8350.028</b>	<b>355 600 203</b>	0.170	1 ¼	36	9	13	46	09 294 04
35	32	<b>8350.035</b>	<b>355 600 204</b>	0.214	1 ½	39	10	14	52	09 294 05
42	40	<b>8350.042</b>	<b>355 600 205</b>	0.240	1 ¾	43	10	14	58	09 294 06
54	50	<b>8350.054</b>	<b>355 600 206</b>	0.430	2 ¾	49	10	14	75	09 294 12



## Screw connection for Optipress/Viega-Sanpress system BR 1

With press-socket and loose nut, flat sealed, fits 1303, 1313, 1323, 1333, 1353, 1363, 1611, 1621, 2100-2140, 2161, 3600, 5010, 5011, 5080, 5081, 5211, 5281, 6320

d1 (mm)	DN (mm)	JRG Code	GF Code	Weight (kg)	d2 G (inch)	l1 (mm)	l2 (mm)	z (mm)	⬡	O-Ring
28	25	<b>8355.028</b>	<b>355 600 604</b>	0.170	1 ¼	42	11	18	46	09 294 04
35	32	<b>8355.035</b>	<b>355 600 605</b>	0.210	1 ½	44	13	18	53	09 294 05
42	40	<b>8355.042</b>	<b>355 600 606</b>	0.360	1 ¾	61	13	20	60	09 294 06
54	50	<b>8355.054</b>	<b>355 600 607</b>	0.540	2 ¾	61	16	15	78	09 294 12



# Worldwide at home

Our sales companies and representatives ensure local customer support in over 100 countries.

[www.gfps.com](http://www.gfps.com)

## Argentina / Southern South America

Georg Fischer Central Plastics  
Sudamérica S.R.L.  
Buenos Aires, Argentina  
Phone +5411 4512 02 90  
Fax +5411 4512 02 93  
gfcentral.ps.ar@georgfischer.com  
www.gfps.com/ar

## Australia

George Fischer Pty Ltd  
Riverwood NSW 2210  
Phone +61 (0)2 9502 8000  
Fax +61 (0)2 9502 8090  
australia.ps@georgfischer.com  
www.gfps.com/au

## Austria

Georg Fischer Rohrleitungssysteme GmbH  
3130 Herzogenburg  
Phone +43 (0) 2782 856 43 0  
Fax +43 (0) 2782 856 64  
austria.ps@georgfischer.com  
www.gfps.com/at

## Belgium / Luxembourg

Georg Fischer NV/SA  
1070 Bruxelles/Brüssel, Belgium  
Phone +32 (0)2 556 40 20  
Fax +32 (0)2 524 34 26  
be.ps@georgfischer.com  
www.gfps.com/be

## Brazil

Georg Fischer Sist. de Tub. Ltda.  
04571-020 São Paulo/SP  
Phone +55 (0)11 5525 1311  
br.ps@georgfischer.com  
www.gfps.com/br

## Canada

Georg Fischer Piping Systems Ltd  
Mississauga, ON L5T 2B2  
Phone +1 (905) 670 8005  
Fax +1 (905) 670 8513  
ca.ps@georgfischer.com  
www.gfps.com/ca

## China

Georg Fischer Piping Systems Ltd  
201319 Shanghai  
Phone +86 21 3899 3899  
Fax +86 21 3899 3888  
china.ps@georgfischer.com  
www.gfps.com/cn

## Denmark / Iceland

Georg Fischer A/S  
2630 Taastrup, Denmark  
Phone +45 (0) 7022 1975  
Fax +45 (0) 7022 1976  
info.dk.ps@georgfischer.com  
www.gfps.com/dk

## Finland

Georg Fischer AB  
01510 Vantaa  
Phone +358 (0)9 586 58 25  
Fax +358 (0)9 586 58 29  
info.fi.ps@georgfischer.com  
www.gfps.com/fi

## France

Georg Fischer SAS  
95932 Roissy Charles de Gaulle Cedex  
Phone +33 (0)1 41 84 68 84  
Fax +33 (0)1 41 84 68 85  
fr.ps@georgfischer.com  
www.gfps.com/fr

## Germany

Georg Fischer GmbH  
73095 Albershausen  
Phone +49 (0)7161 302 0  
Fax +49 (0)7161 302 25 9  
info.de.ps@georgfischer.com  
www.gfps.com/de

## India

Georg Fischer Piping Systems Pvt. Ltd.  
400 076 Powai, Mumbai  
Phone +91 22 4007 2001  
Fax +91 22 4007 2020  
branchoffice@georgfischer.com  
www.gfps.com/in

## Indonesia

Georg Fischer Representative Office  
10310 Jakarta  
Phone +62 21 391 48 62  
Fax +62 21 391 48 63  
sgp.ps@georgfischer.com  
www.gfps.com/sg

## Italy

Georg Fischer S.p.A.  
20063 Cernusco S/N (MI)  
Phone +39 02 921 86 1  
Fax +39 02 921 86 24 7  
it.ps@georgfischer.com  
www.gfps.com/it

## Japan

Georg Fischer Ltd  
556-0011 Osaka  
Phone +81 (0)6 6635 2691  
Fax +81 (0)6 6635 2696  
jp.ps@georgfischer.com  
www.gfps.com/jp

## Korea

Georg Fischer Piping Systems  
463-824 Seoul  
Phone +82 31 8017 1450 3  
Fax +82 31 8017 1454  
kor.ps@georgfischer.com  
www.gfps.com/kr

## Malaysia

Georg Fischer (M) Sdn. Bhd. Sales Office  
40460 Shah Alam, Selangor Darul Ehsan  
Phone +60 (0)3 5122 5585  
Fax +60 (0)3 5122 5575  
my.ps@georgfischer.com  
www.gfps.com/my

## Mexico / Northern Latin America

Georg Fischer S.A. de C.V.  
Apodaca, Nuevo Leon, Mexico  
Phone +52 (81) 1340 8586  
Fax +52 (81) 1522 8906  
mx.ps@georgfischer.com  
www.gfps.com/mx

## Middle East

Georg Fischer  
Piping Systems (Switzerland) Ltd  
Dubai, United Arab Emirates  
Phone +971 4 289 49 60  
Fax +971 4 289 49 57  
gss.ps@georgfischer.com  
www.gfps.com/int

## Netherlands

Georg Fischer N.V.  
8161 PA Epe  
Phone +31 (0) 578 678 222  
Fax +31 (0) 578 621 768  
nl.ps@georgfischer.com  
www.gfps.com/nl

## New Zealand

Georg Fischer Ltd  
5140 Upper Hutt  
Phone +64 (0) 4 527 9813  
Fax +64 (0) 4 527 9834  
nz.ps@georgfischer.com  
www.gfps.com/nz

## Norway

Georg Fischer AS  
1351 Rud  
Phone +47 67 18 29 00  
Fax +47 67 13 92 92  
no.ps@georgfischer.com  
www.gfps.com/no

## Philippines

Georg Fischer Representative Office  
1604 Pasig City  
Phone +632 571 2365  
Fax +632 571 2368  
sgp.ps@georgfischer.com  
www.gfps.com/sg

## Poland

Georg Fischer Sp. z o.o.  
05 090 Sekocin Nowy  
Phone +48 (0)22 3131 050  
Fax +48 (0)22 3131 060  
poland.ps@georgfischer.com  
www.gfps.com/pl

## Romania

Georg Fischer Rohrleitungssysteme (Elvetia)  
S.A. SUCURSALA BUCURESTI  
020257 Bucuresti  
Phone +40 311 040 492  
Fax +40 212 317 479  
ro.ps@georgfischer.com  
www.gfps.com/int

## Russia

Georg Fischer  
Piping Systems (Switzerland) Ltd  
Moscow Representative Office  
125040 Moscow  
Phone +7 495 748 11 44  
ru.ps@georgfischer.com  
www.gfps.com/ru

## Singapore

Georg Fischer Pte Ltd  
528 872 Singapore  
Phone +65 6747 0611  
Fax +65 6747 05 77  
sgp.ps@georgfischer.com  
www.gfps.com/sg

## Spain / Portugal

Georg Fischer S.A.  
28046 Madrid  
Phone +34 (0) 91 781 98 90  
Fax +34 (0) 91 426 08 23  
es.ps@georgfischer.com  
www.gfps.com/es

## Sweden

Georg Fischer AB  
11743 Stockholm  
Phone +46 (0) 8 506 77 50 0  
Fax +46 (0) 8 749 23 70  
info.se.ps@georgfischer.com  
www.gfps.com/se

## Switzerland

Georg Fischer  
Rohrleitungssysteme (Schweiz) AG  
8201 Schaffhausen  
Phone +41 (0)52 631 30 26  
Fax +41 (0)52 631 28 00  
ch.ps@georgfischer.com  
www.gfps.com/ch

## Taiwan

Georg Fischer Co. Ltd.  
24158 New Taipei City  
Phone +886 2 8512 2822  
Fax +886 2 8512 2823  
tw.ps@georgfischer.com  
www.gfps.com/tw

## Turkey

Georg Fischer Hakan Plastik  
Boru ve Profil San. Tic. A.S.  
59500 Cerkezoy / Tekirdag  
Phone +90 282 726 64 43  
Fax +90 282 726 94 67  
hpsales@hakan.com.tr  
www.hakan.com.tr

## United Kingdom / Ireland

Georg Fischer Sales Ltd  
CV2 2ST Coventry, United Kingdom  
Phone +44 (0) 2476 535 535  
Fax +44 (0) 2476 530 450  
uk.ps@georgfischer.com  
www.gfps.com/uk

## USA / Caribbean

Georg Fischer LLC  
92618 Irvine  
Phone +1 714 731 88 00  
Fax +1 714 731 62 01  
Toll Free 800/854 40 90  
us.ps@georgfischer.com  
www.gfpiping.com

## International

Georg Fischer  
Piping Systems (Switzerland) Ltd  
8201 Schaffhausen/Switzerland  
Phone +41 (0) 52 631 30 03  
Fax +41 (0) 52 631 28 93  
info.export@georgfischer.com  
www.gfps.com/int