

## Hyclean Automation System

# Instructions for replacing

## Controllers / Actuators

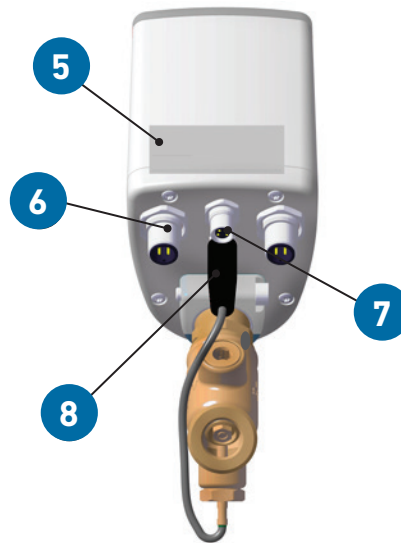
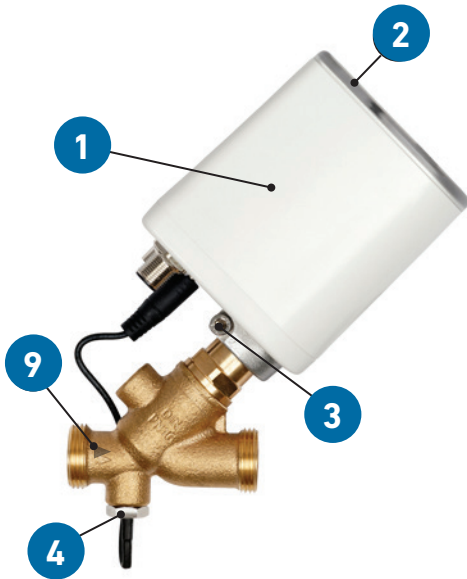


# Hycleen Automation System - Instructions for replacing controllers / actuators



# Legend

## JRG LegioTherm valve with controller / actuator



- 1 Controller / actuator
- 2 Light ring
- 3 Controller fastening screw (Allen key)
- 4 PT1000 temperature sensor
- 5 Label with serial number (removable)
- 6 M12 socket for serial wiring (Master/valve)
- 7 M8 socket for connecting external sensor
- 8 Plug for PT1000
- 9 Flow arrow
- 10 Insulation

# Preparation

You will need the following aids for the replacement:

## **Tools**

- Torch
- Waterproof marking pen
- Ladder/climbing aid
- Cordless screwdriver
- Allen key SW 4
- Pipe wrench
- Wire cutters

## **Material**

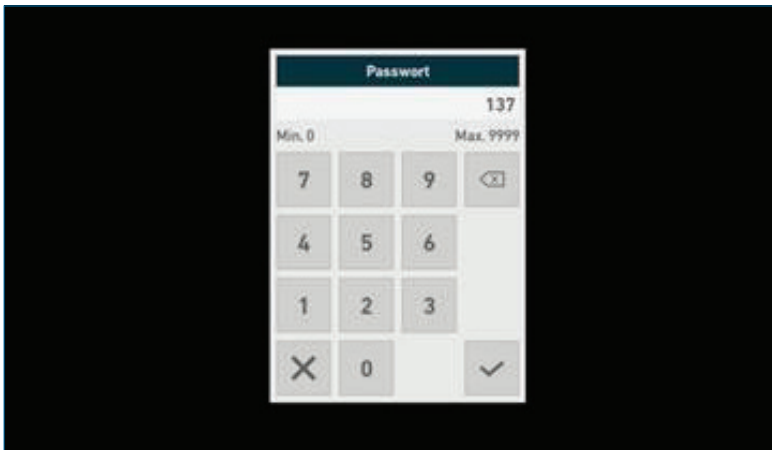
- Cable tie 300 mm
- Replacing controllers / actuators

## **Technical documents**

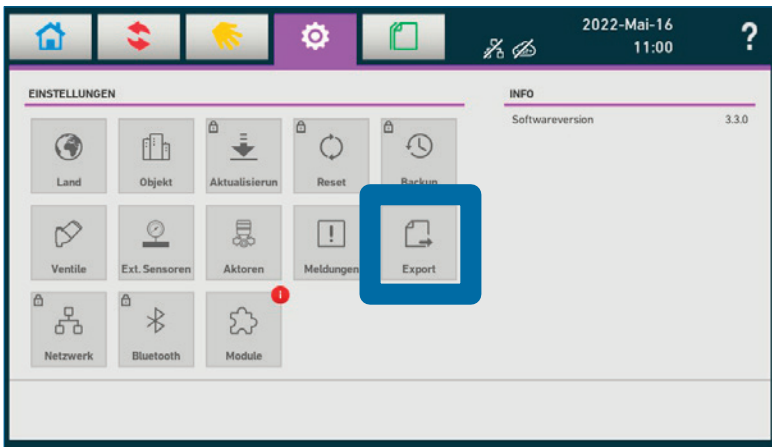
- System diagram / Layout / Inspection plan

# 1 Decommissioning

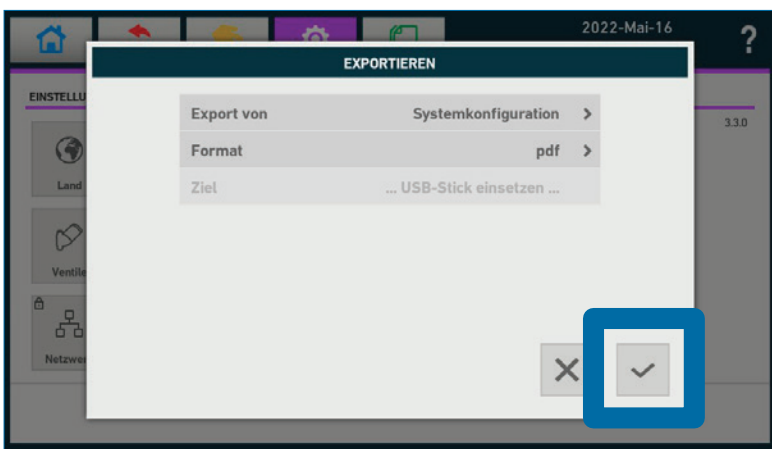
Please download the current system configuration (commissioning log) to a USB stick before replacement.



1.1  
Unlock the lock screen by entering the [Code 137](#).



1.2  
Under Settings, you can download the current system configuration using [Export folder icon](#).



1.3  
Insert the USB stick into the port provided. Confirm the checkmark to create the log.  
[Move the pdf document from the USB stick to a PC to clear the USB stick for commissioning after the replacement. Otherwise, the log created will be overwritten.](#)

Data (such as valve names) may become lost during the replacement of controllers /actuators. Any missing data can be entered manually at the Master after commissioning, which takes place after the replacement, based on the log created.

## 2 Removal controllers / actuators



### 2.1

The system must be de-energized before replacing the controllers / actuators.



### 2.2

Moving from valve to valve, replace the controllers / actuators. It is not necessary to respect the sequence of the connected valves.

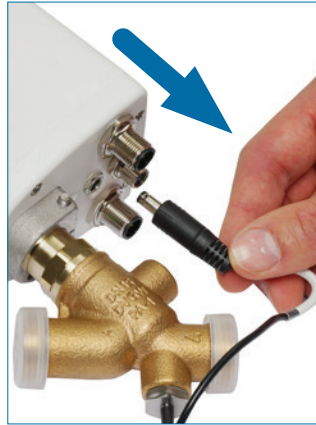


### 2.3

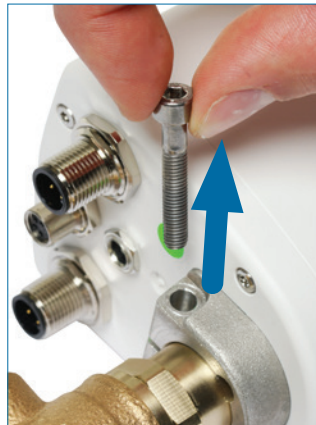
Detach the voltage and communication cable from the controller / actuator.

**Tip:** If you cannot do this by hand, use a pipe wrench.

## Hyclean Automation System - Instructions for replacing controllers / actuators



2.4  
Detach the PT1000 (temperature sensor) and, if in place, the external sensor from the controller / actuator.

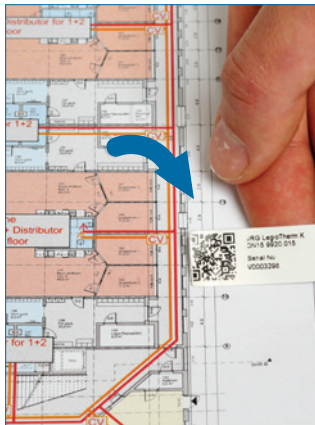


2.5  
Slacken the Allen screw of the mounted controller / actuator using the Allen key supplied. The screw must be completely detached from the controller / actuator.



2.6  
Remove the existing controller / actuator from the valve and mark it with a cross, like shown on the image.

# 3 Installing new controllers / actuator



3.1  
Remove the sticker with the serial number of the new controller / actuator and place it on your existing system diagram at the corresponding valve.



3.2  
Mount the new controller / actuator on the valve and tighten the screw.



3.3  
Connect the PT1000 (temperature sensor) and, if in place, the external sensor. Connect the two voltage and communication cables to the new controller / actuator (hand-tighten). **Note that only one connection is required for the last controller / actuator in the row.**

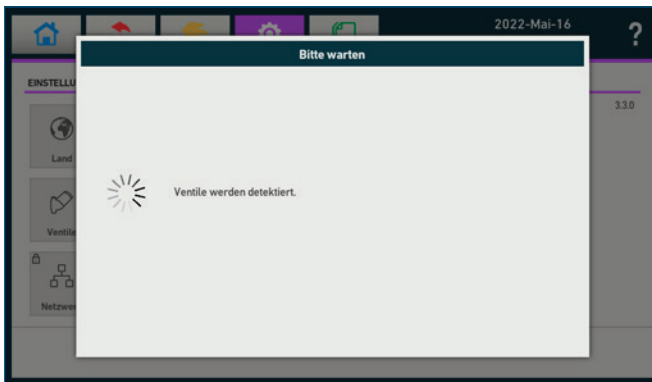


3.4  
Repeat these steps until the controllers / actuators have been replaced on all valves.

# 4 Commissioning

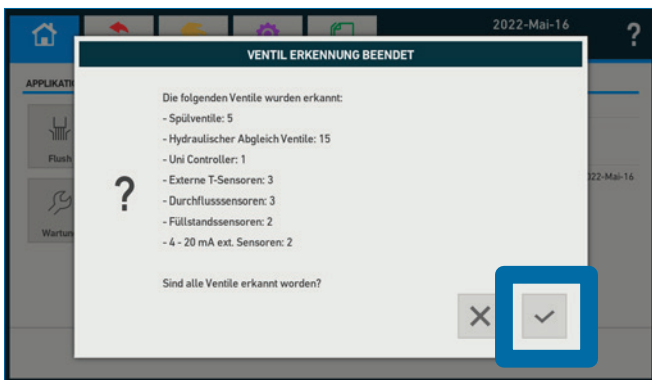


4.1  
After replacing the controllers/  
actuators, switch on the Master.



4.2  
The valves are being detected.

4.3  
Firmware is being updated (clock  
running).  
Wait until **Info finished** appears.



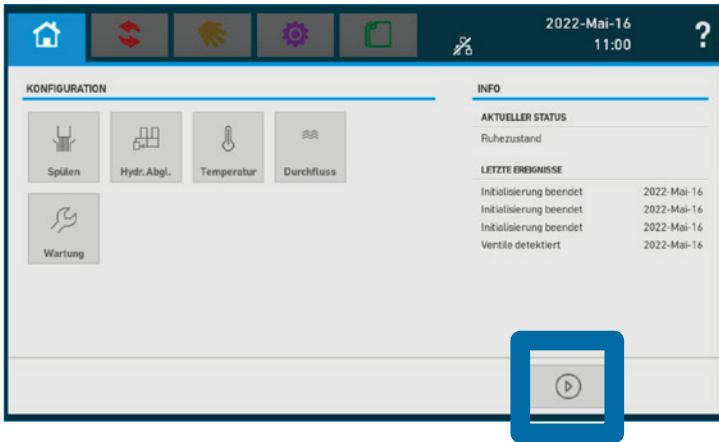
4.4  
Once all valves have been detected,  
confirm this by pressing the check-  
mark button.  
Wait.



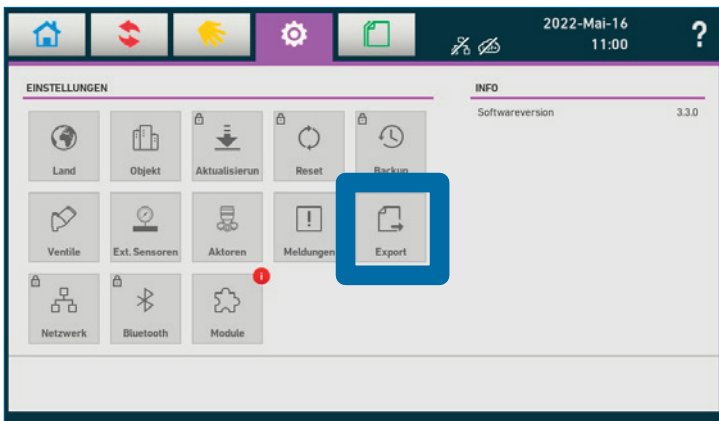
4.5  
The message - initializing 'Devices'  
- is faded in briefly.

Depending on the system, the  
following additional information may  
also appear  
- **Network connection established**  
- **Cloud connection established.**

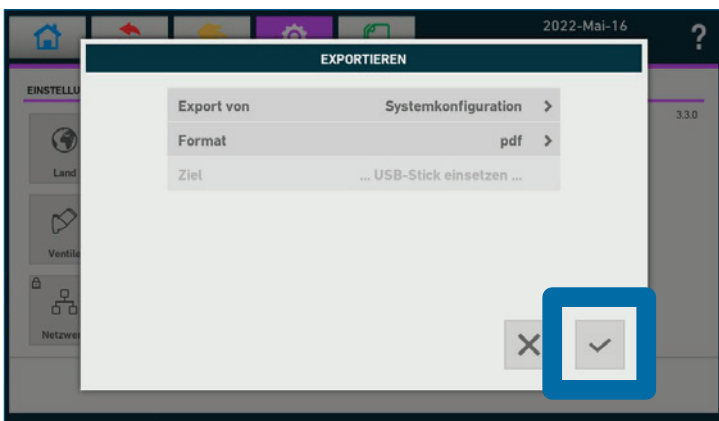
# Hycleen Automation System - Instructions for replacing controllers / actuators



4.6  
Confirm play button / start.



4.7  
Under Settings, you can now download the new system configurations (commissioning log) using the Export folder icon.



4.8  
Insert the USB stick into the port provided.

If the USB stick contains an old system configuration, it will be overwritten automatically. Confirm the checkmark to create the log.

# 5 Shipping

Send the new and old system configurations (also possible by mail) together with the replaced controllers / actuators back to us.

**We will compare the configuration before and after the replacement.**

If we find any discrepancies, we will contact you.

**E-mail: [tkd.jrg.ps@georgfischer.com](mailto:tkd.jrg.ps@georgfischer.com)**



## Local support around the world

Visit our webpage to get in touch with your local specialist:  
[www.gfps.com/our-locations](http://www.gfps.com/our-locations)



The information and technical data (altogether "Data") herein are not binding, unless explicitly confirmed in writing. The Data neither constitutes any expressed, implied or warranted characteristics, nor guaranteed properties or a guaranteed durability. All Data is subject to modification. The General Terms and Conditions of Sale of Georg Fischer Piping Systems apply.



e / 03.23 / DH  
© Georg Fischer JRG AG  
Hauptstrasse 130  
CH-4450 Sissach/Switzerland  
Phone +41 (0) 61 975 22 22  
info.jrg.ps@georgfischer.com  
Printed in Switzerland