

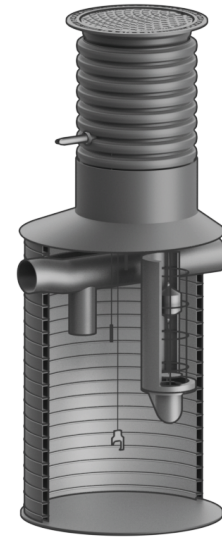
Fact Sheet Stormwise Oil Separator with Bypass

Effective solution for stormwater purification

Removal of oil substances from stormwater

The GF Stormwise oil separator is designed to separate sedimenting mineral suspensions, oil and gasoline substances from rainwater or wastewater, which must not be discharged to the receiver, sewage system or local sewage treatment plants. The oil separator with bypass is mainly used in rainwater applications and serves as a "first flush" separator for cleaning runoff surface water from parking lots, road areas, etc.

The GF Stormwise oil separator is a device, that uses the principle of coalescence. In an oil separator equipped with a settling tank, sedimentation of the mineral suspension of sand and mud takes place in the settling part. Gravity and the physical processes of adsorption and coalescence are used in the separation chamber.



Compliant with EN 858, class 1

Accelerates your project timeline and simplifies approvals by authorities.



Complete and prefabricated

Saves up to 50% installation time and reduces risks for installation errors.



Compact and robust

Saves up to 50% space and allows flexible placement, even under traffic load.



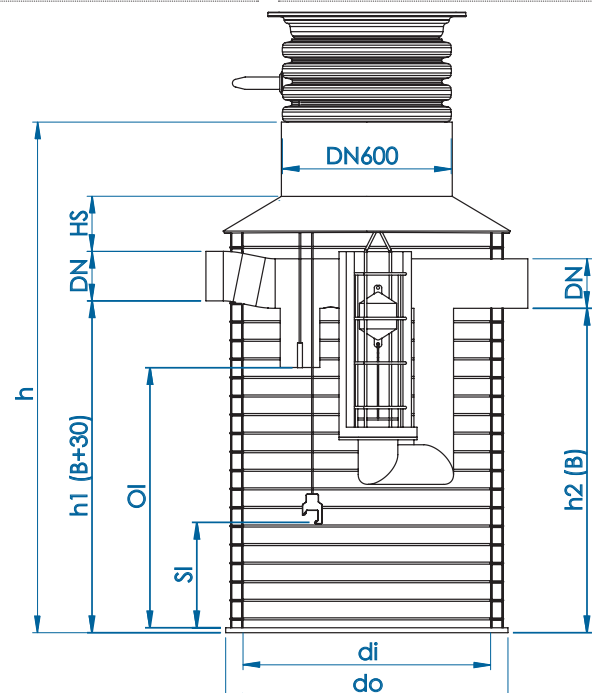
Convenient and accessible

For reliable operation and easy maintenance.

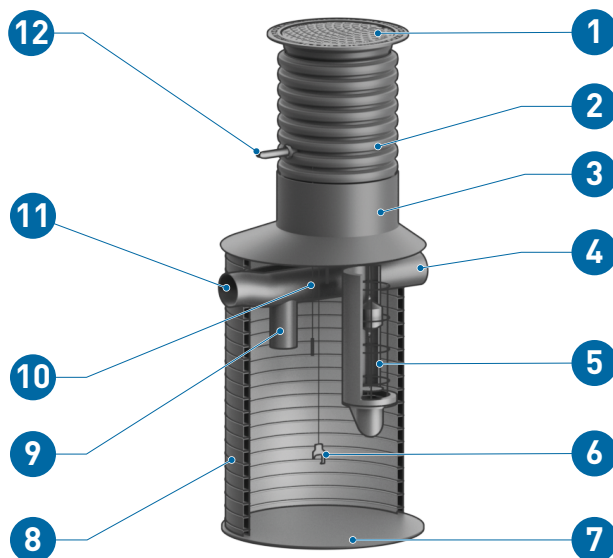
Technical data

Application	Purification of stormwater
Material (body)	PE 100
Material (internal equipment)	PE 100 or stainless steel
Color	Black (outside), white (inside)
Electrical connection	With drilling and rubber seal
Inspection well	IQ-600 PP riser system
Alarm system	ASA-02 (optional, installed separately)
Inner diameter (di)	1000 - 2000 mm
Outer diameter (do)	1140 - 2250 mm
Height (h)	2080 - 4360 mm
In/out diameter (DN)	200 - 600 mm
Inlet height h1 (B+30)	1340 - 3030 mm
Outlet height h2 (B)	1310 - 3000 mm
HS	240 - 430 mm
Weight	110 - 790 kg
Nominal inlet capacity	3 - 60 l/s
Sand trap capacity	660 - 6100 l
Oil capacity	157 - 1100 l
Sludge probe height	420 - 971 mm
Oil probe height	1150 - 2720 mm
Damming probe height	1640 - 3830 mm

Approvals	CE-mark, Declaration of performance No. CPR-20-OIL-2101
Standards	EN 858, EN 13476, EN 13598



Components



Pos.	Designation	Pos.	Designation
1	Riser pipe cover	7	Sludge storage
2	Riser pipe	8	Oil separator body
3	Riser pipe connector	9	Inlet deflector
4	Outlet connection	10	Bypass
5	Coalescing unit with auto-closure	11	Inlet connection
6	Alarm system (optional)	12	Electrical connector for alarm system

Item numbers

Item no.	Description
35001143205	OIL SEPARATOR-PE- 3/15-0,66 BYPASS 5
35001143206	OIL SEPARATOR-PE- 3/30-0,66 BYPASS 10
35001143207	OIL SEPARATOR-PE- 6/30-1,2 BYPASS 5
35001143208	OIL SEPARATOR-PE- 6/60-1,2 BYPASS 10
35001143209	OIL SEPARATOR-PE- 10/50-2 BYPASS 5
35001143210	OIL SEPARATOR-PE- 10/100-2 BYPASS 10
35001143211	OIL SEPARATOR-PE- 20/100-2 BYPASS 5
35001143212	OIL SEPARATOR-PE- 20/200-2 BYPASS 10
35001143213	OIL SEPARATOR-PE- 30/150-3 BYPASS 5
35001143214	OIL SEPARATOR-PE- 30/300-3 BYPASS 10
35001143215	OIL SEPARATOR-PE- 40/200-4 BYPASS 5
35001143216	OIL SEPARATOR-PE- 40/400-4 BYPASS 10
35001143217	OIL SEPARATOR-PE- 50/250-5 BYPASS 5
35001143218	OIL SEPARATOR-PE- 50/500-5 BYPASS 10
35001143219	OIL SEPARATOR-PE- 60/300-6,1 BYPASS 5
35001143220	OIL SEPARATOR-PE- 60/600-6,1 BYPASS 10
35001161341	OIL CONTROL UNIT ASA-02
35001161342	OIL CONNECTION KIT ASA 1207
35001161343	OIL LAYER ASA-LP
35001161344	OIL HIGH LEVEL ASA-HLP
35001161345	OIL SLUDGE ASA-SP
35001059789	IQ CHAMBER TELESCOPE SEALING RING 600 FOAM EPDM
35001060626	IQ CHAMBER RISER PIPE SEALING RING 600
35001086897	CHAMBER COVER 600 BLIND WITH FLOATING FRAME D400
35001086666	IQ RISER PIPE 684/600 BLACK 1.2M PP SINGLE LAYER

00001233310 / GFDO_OP_00105_EN (03.26)



Speak to an expert
 Discover how Stormwise solutions can transform
 your stormwater management.
www.gfps.com/stormwise

The information and technical data (altogether "Data") herein are not binding, unless explicitly confirmed in writing. The Data neither constitutes any expressed, implied or warranted characteristics, nor guaranteed properties or a guaranteed durability. All Data is subject to modification. The General Terms and Conditions of Sale of Georg Fischer Piping Systems apply.

