

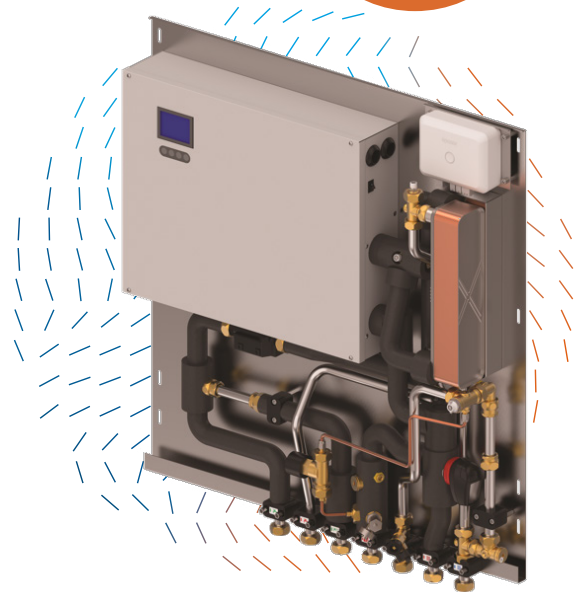
Uponor Combi Port E-Hybrid

Hot water on demand - without compromises

Next generation water hygiene solution for low temperature systems.

The shift towards electrification and energy-saving solutions is accelerating, driving the market from gas generators to heat pumps. However, when combined with on-demand domestic hot water systems like Heat Interface Units (HIU), this transition can lead to reduced flow rates, causing user discomfort and higher energy consumption. In many cases, additional booster pumps are required to compensate for pressure losses, adding to installation complexity and operational costs.

Uponor Combi Port E-Hybrid revolutionizes this process by integrating an electrical heater on the heating side of the HIU. This breakthrough eliminates pressure losses on the tap water side, removing the need for an extra booster pump while improving overall comfort and efficiency. With significantly higher tap flow rates and optimized energy use, this next-generation HIU ensures instant hot water without unnecessary waste, enhancing both user experience and sustainability.



Why Choose Uponor Combi Port E-Hybrid?



18% Energy Savings

In Heat Pump installations, optimizing performance and reducing energy consumption



39% Increased Maximum Flow Rate

For higher comfort: 18,6 L/min compared to previous 13,4 L/min



88% Less Pressure Drop

In normal operation: Pressure drop reduced to 0.2 Bar @ 9 L/min, down from 1.7 Bar



Uponor pioneered the first Hybrid Heat Interface Unit and now sets a new benchmark with the Uponor Combi Port E-Hybrid, delivering instant hot water, enhanced hygiene, and superior efficiency for energy-conscious buildings. Visit [uponor.com/innovations](https://www.uponor.com/innovations) to learn more.