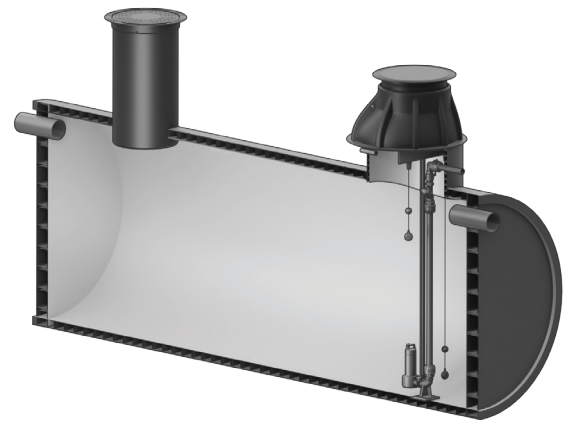


# Fact Sheet Stormwise Harvesting Tank

## Effective solution for stormwater management

### Stormwater storage and re-use

A harvesting tank is used to store stormwater to be used for irrigation or other technical use where drinking water is not needed. This is of particular importance for communities in very dry areas, where such additional water resources offer a sustainable solution for conserving water while reducing flooding risks. A harvesting tank is usually used in combination with filters, valves and pumps that fit the specific purpose. These additional components can be attached inside or outside the tank.



#### Customizable and circular

Saves water and costs, in smart combination with retention functionality, or as a stand-alone system.



#### Complete and prefabricated

Saves up to 50% installation time and reduces risks for installation errors.



#### Compact and robust

Allows flexible placement, even under traffic load.



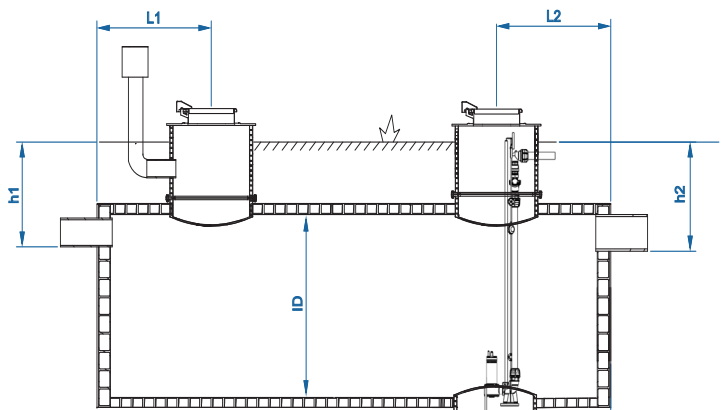
#### Convenient and accessible

For reliable operation and easy maintenance.

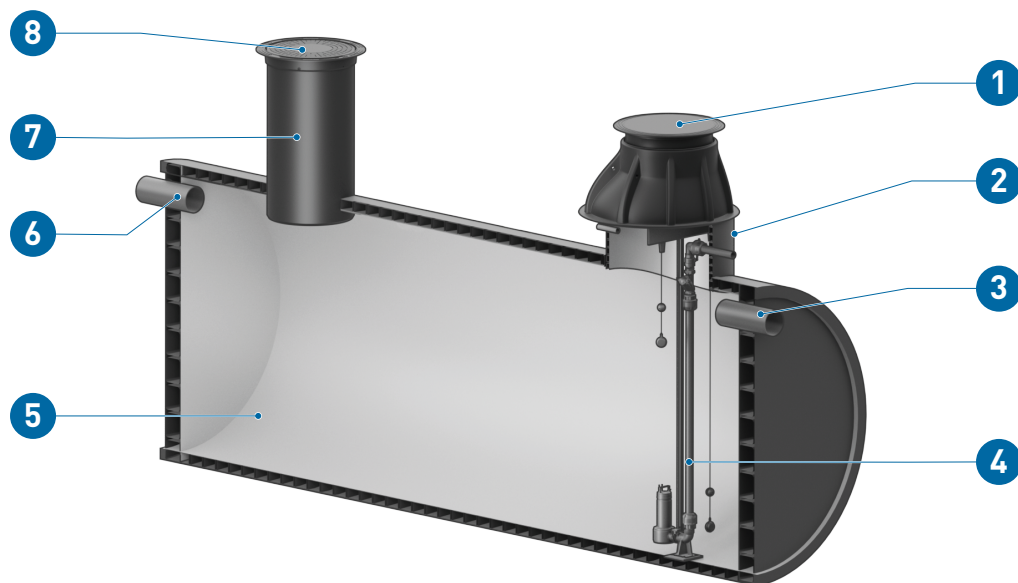
## Technical data

<b>Application</b>	Stormwater harvesting
<b>Material</b>	PE 100
<b>Color</b>	Black (outside), white (inside)
<b>Ring stiffness</b>	SN2, SN4, SN8 or by agreement
<b>Tank inner diameter (ID)</b>	Customizable
<b>Tank length (L)</b>	Customizable
<b>Inlet position below ground level (h1)</b>	Customizable
<b>Overflow position below ground level (h2)</b>	Customizable
<b>Position of the first riser (L1)</b>	Customizable
<b>Position of the second riser (L2)</b>	Customizable

<b>Approvals</b>	Nordic Poly Mark, Cert. nr. 4075
<b>Standards</b>	EN 13476, EN 13598



## Components



Pos.	Designation	Pos.	Designation
1	Riser top 2	5	Tank body
2	Riser 2	6	Inlet
3	Overflow	7	Riser 1
4	Outlet pump	8	Riser top 1

### Customizable components

- Tank inner diameter, length and volume
- Inlet type and height
- Emptying type and height
- Number and positions of the risers
- Riser height
- Riser top types

### Riser top types and sizes (selection)

Type A	Type B	Type C	Type D	Type E
ø860/800 With safety gate	600x600 metal 800x800 metal	ø600 GE 40tn ø630 GE 40tn	ø630 GE 40tn ø800 GE 40tn	ø600 no lid ø800 no lid ø1000 no lid
				

### Tank dimension

ID [mm]	800	1000	1200	1400	1500	1600	1800	2000	2200	2400	2500	3000	3400	3500	4000
Volume [m <sup>3</sup> /m]	0.5	0.8	1.1	1.5	1.7	2.0	2.5	3.1	3.8	4.5	4.9	7.1	9.0	9.6	12.6

### Optional components

- Ventilation
- Anchoring
- Emptying (e.g. outlet pump)

## Item number

Item no.	Description
35001139924	Stormwater harvesting tank



**Speak to an expert**  
Discover how Stormwise solutions can transform your stormwater management.  
[www.gfps.com/stormwise](http://www.gfps.com/stormwise)

The information and technical data (altogether "Data") herein are not binding, unless explicitly confirmed in writing. The Data neither constitutes any expressed, implied or warranted characteristics, nor guaranteed properties or a guaranteed durability. All Data is subject to modification. The General Terms and Conditions of Sale of Georg Fischer Piping Systems apply.

