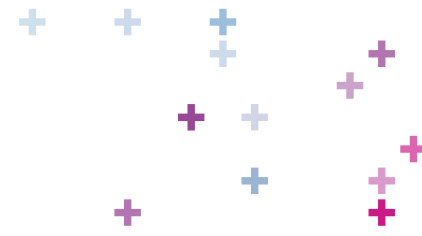


Hyclean Connect / Accesso remoto

# Guida rapida

Descrizione del processo di collegamento di un Hyclean Automation System a la soluzione acceso remoto Hyclean Connect





# 1. Registrazione su CONNECT Hub

Condizioni preliminari:

- Hycleen Master è installato nell'edificio e in funzione o pronto al funzionamento.
- Hycleen AS Software 3.0 o più recente è installato su Hycleen Master. Tutti i master Hycleen del 2021 hanno almeno il software 3.0. La versione software esistente può essere vista sul master sotto Settings.
- Impostare le impostazioni della connessione di rete/connessione Internet sul master in „Impostazioni/Rete“ su automatico, o se è preimpostato un indirizzo IP fisso su manuale e inserire questo indirizzo IP (vedi pagina 9).
- La connessione Internet (connessione di rete) al master Hycleen è stabilita. Lo si vede dall'icona di stato nella schermata iniziale del master (+ notifica „La connessione Internet è stata stabilita“). La connessione a Internet può essere stabilita anche successivamente.
- Tenere pronti l'indirizzo MAC e il numero di serie del master Hycleen (vedi pagina 9).

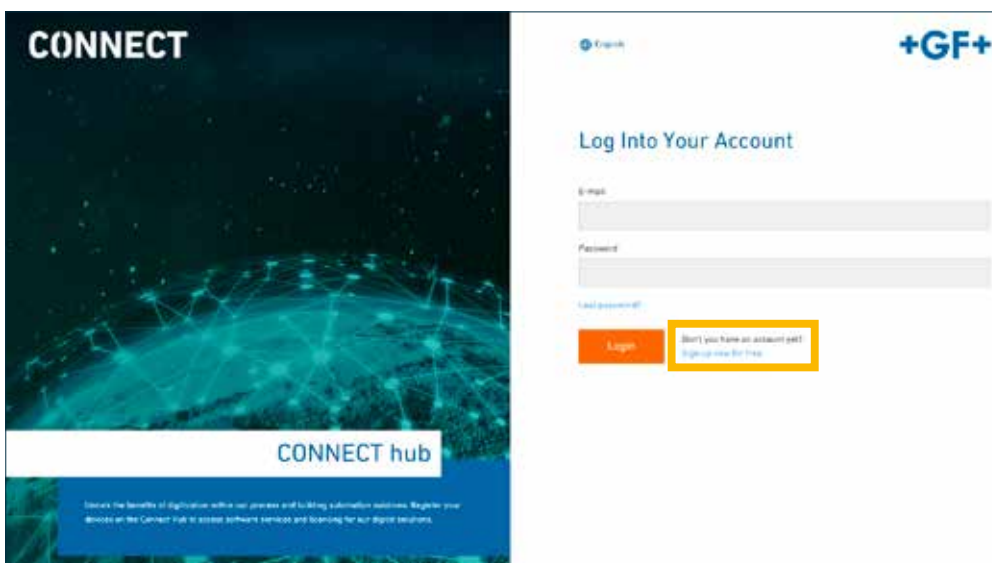


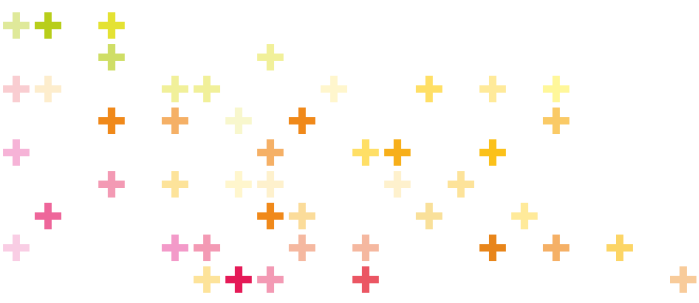
Creare il proprio account utente personale.

Registrarsi come utente e registrare il proprio Hycleen Automation System su:

<https://connect.gfps.com/>

Fare clic su “registra ora” e successivamente su “registra”.





➡ Inserimento dati:

**CONNECT**

English **+GF+**

### Sign up now for free

When you register this company account, you will be the first CONNECT Hub user for your company and you will automatically receive administrative rights. As an administrator, you can then invite other employees from your company as users and then assign administrative rights to them. Please note: Only one user can register for each company. All other users must be invited and added by the administrator or the user management. Please complete the form to register. Your account will be activated after a successful profile creation.

E-mail:

Company:

Country:

Always consent to having Georg Fischer store my submitted information according to my Privacy Statement and Terms of Use so they can respond to my inquiry.

[Privacy Statement](#) [Terms of Use](#)

[Link to login](#)

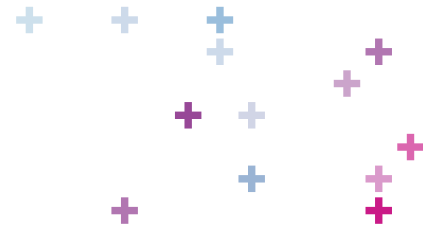
**CONNECT**

English **+GF+**

### Registration request successful

You are now registered! You will get an email shortly including activation instructions. Please follow the description in this hub.

➡ Verrà inviata un'e-mail per convalidare l'indirizzo e-mail. Fare clic su: "Verifica ora".




➔ Attivare il proprio account utente con "Verifica ora"

The screenshot shows an email from +GF+ with the subject "Please activate your user account". The email body includes a photo of a worker in a warehouse, a "Verify now" button highlighted in orange, and contact information for Givog Pixerel Piping Systems Ltd. The footer contains social media icons for LinkedIn, Facebook, Twitter, and YouTube.

**+GF+**

Please activate your user account



Dear customer,





Thank you very much for registering at <https://connect.gfps.com>.  
To activate your user account, please click on the following link:

**Verify now**

We will then process your registration. Please be aware that it may take some time before your registration is finally approved, at which point you will be granted access to <https://connect.gfps.com>. The activation link is active for 48 hours.  
If your account needs a manual activation, you will receive a separate confirmation via e-mail.

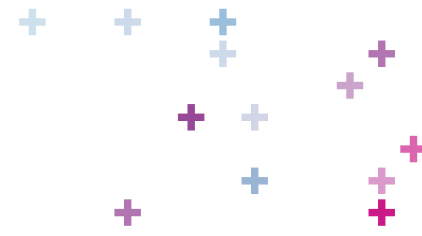
Givog Pixerel Piping Systems Ltd  
Phone: +41 52 631 11 11  
Email: [connect@gfps.com](mailto:connect@gfps.com)

[www.gfps.com/global](http://www.gfps.com/global)

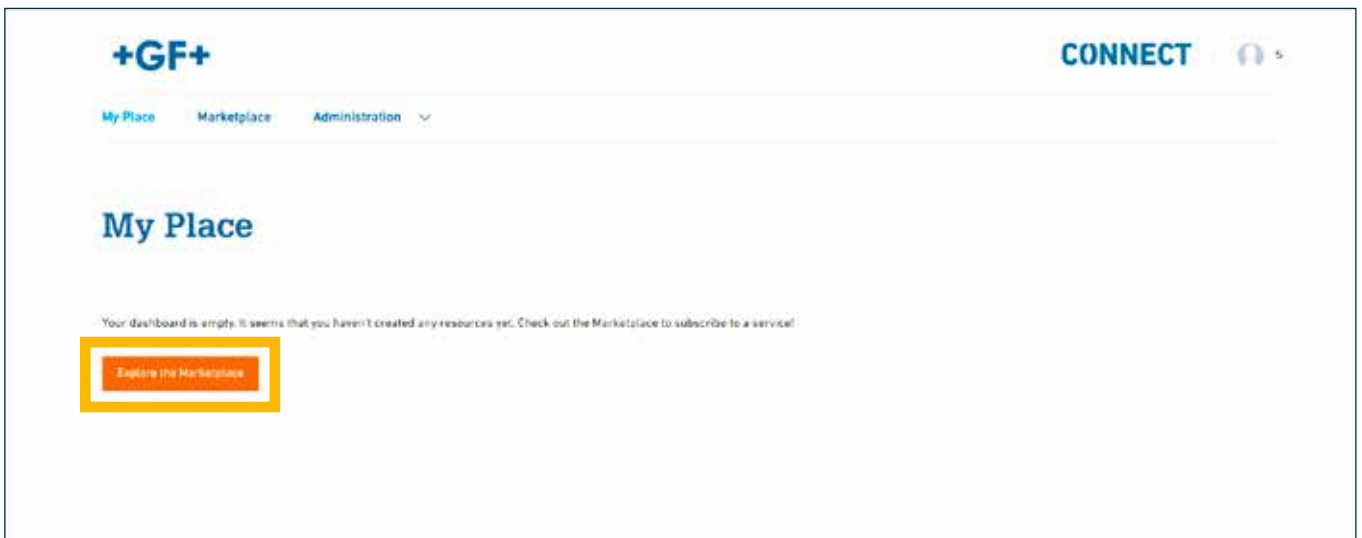


➡ Inserire i propri dati e registrarsi.

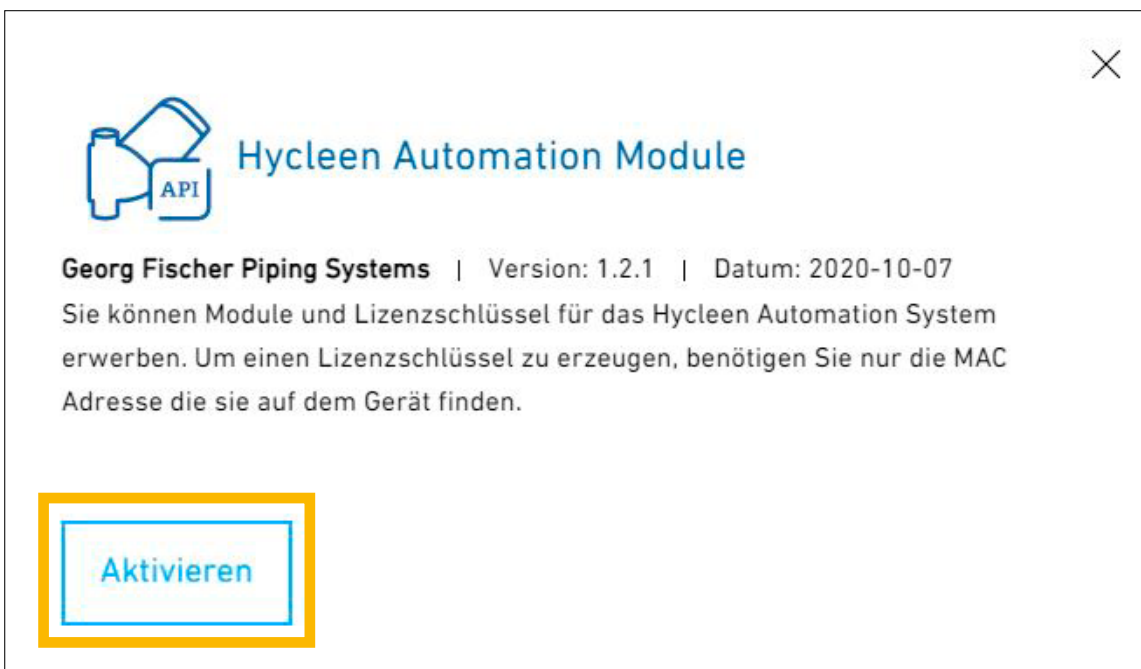


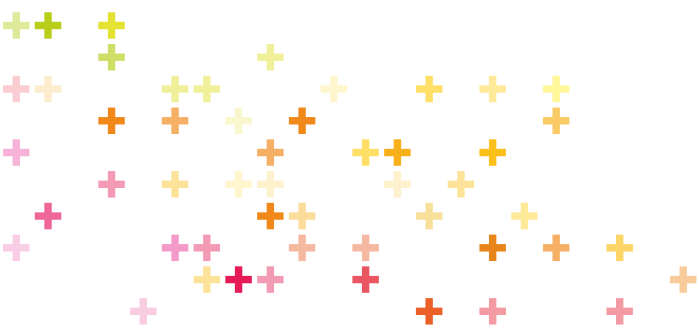
## 2. Registrarsi per Hycleen Automation Module

➔ Selezionare "Scopri mercato".



➔ Selezionare e attivare il modulo Hycleen Automation.







Inserire infine i dati cliente



Il numero di partita IVA è il codice fiscale dell'azienda.  
Inserire il codice cliente (se si è già clienti Georg Fischer).

  
 **Hycleen Automation Modules**  
**Georg Fischer Piping Systems** | Version: 1.2.1 | Date: 2020-10-07  
Unlock the expansion packages of the Hycleen Automation System.  

Company Name \*

Street \*  No \*

City \*  Postal Code \*

VAT Number \*  Customer Number

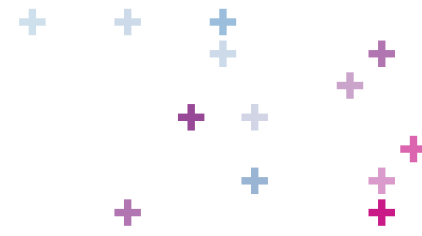
DE\_\_\_\_\_

Activate

\* Mandatory field

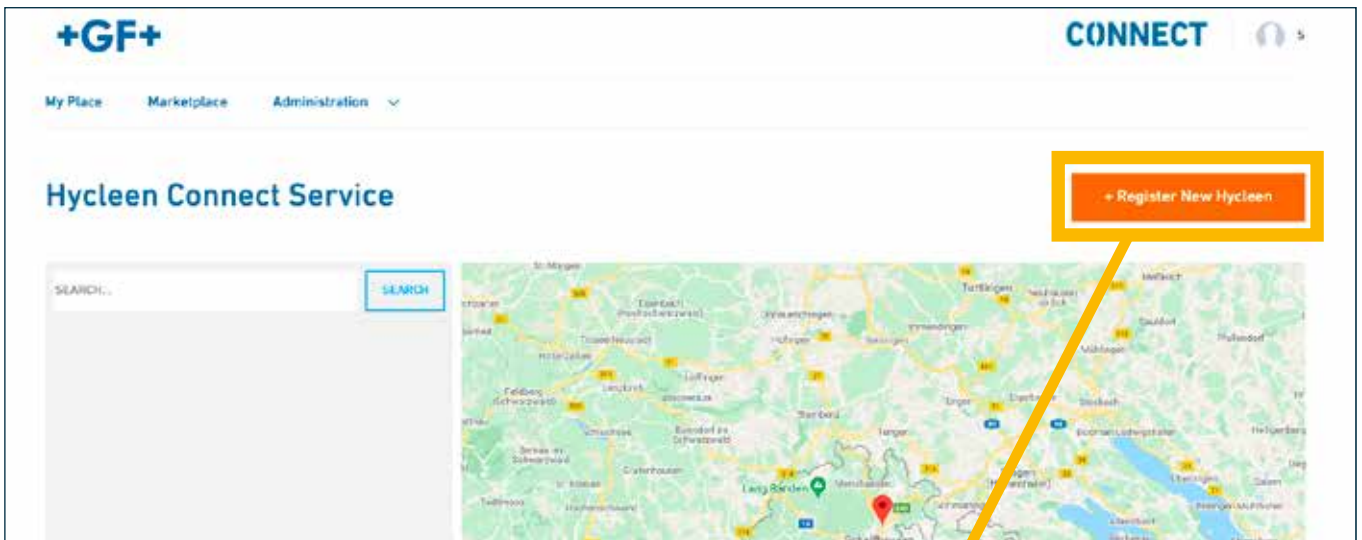


In "Il mio posto di lavoro", aprire il modulo Hycleen Automation.



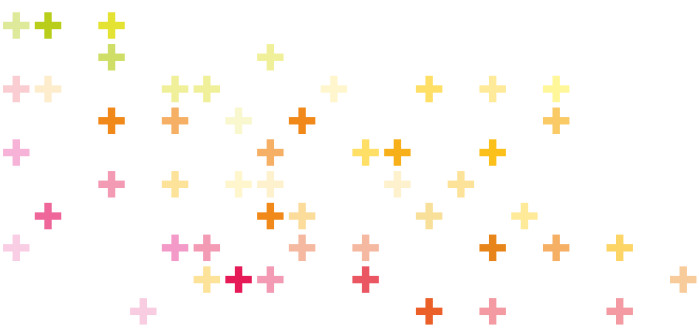
### 3. Registrazione del proprio Hycleen Automation System

➔ Ora è possibile registrare un Master “+ Registra nuovo Hycleen”



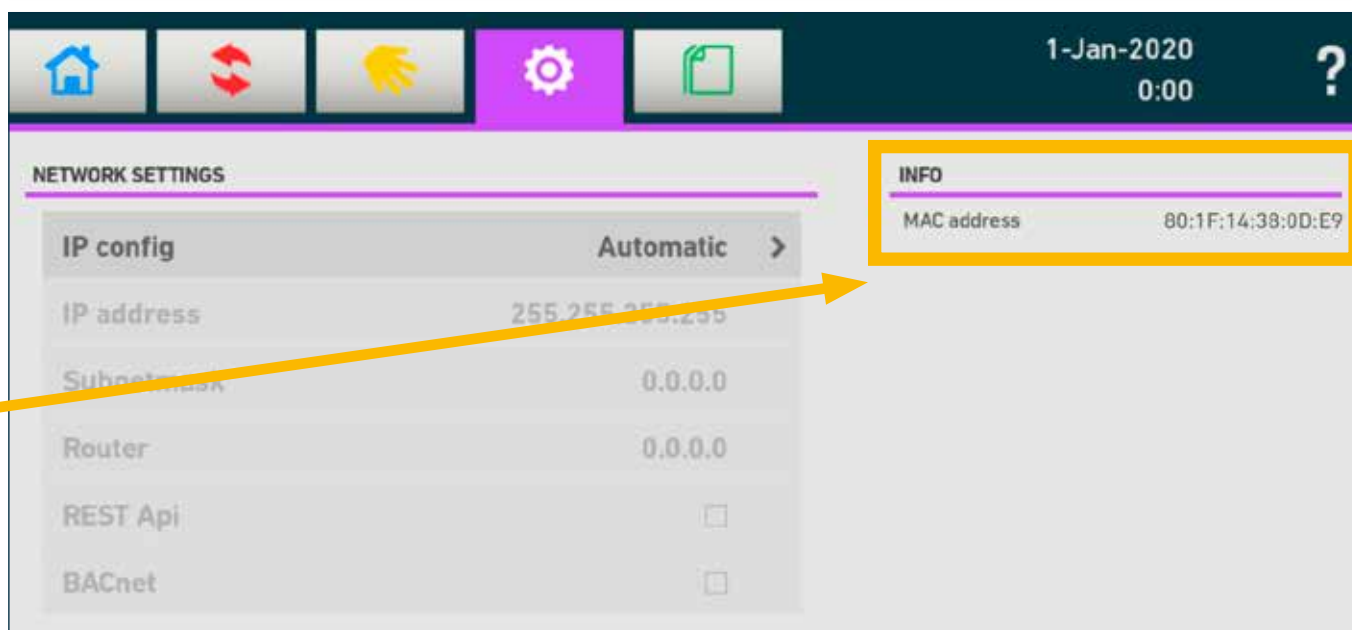
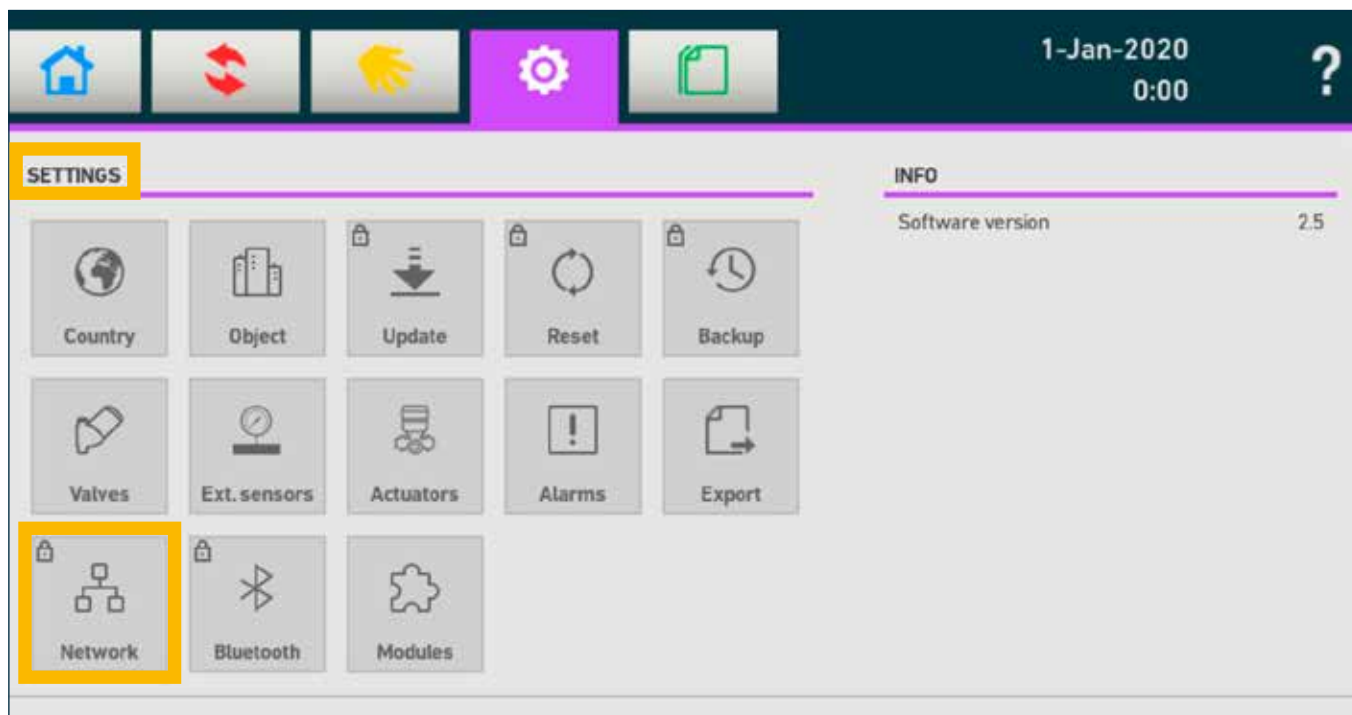
➔ Dopo aver fatto clic su “+ Registra nuovo Hycleen Automation System” è possibile aggiornare i propri dati.

*Qui è possibile descrivere l'installazione in modo più preciso.  
Questo nome viene visualizzato nella rappresentazione*



Dove si trova il numero di serie del Master e l'indirizzo MAC?

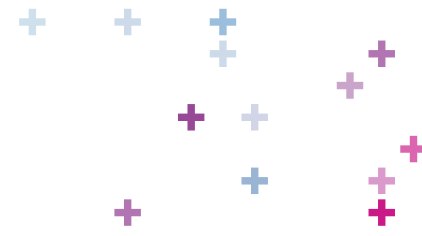
- Il numero di serie si trova su un'etichetta a lato del Hycleen Master
- Indirizzo MAC: Vai sul Master alla scheda "Impostazioni" e fai clic su "Rete" (password: 42).



Prestare attenzione a inserire l'indirizzo MAC correttamente, poiché esso viene utilizzato per codificare le licenze. Se viene inserito in modo scorretto, allora le licenze generate non funzionano.



La configurazione IP deve essere impostata di conseguenza. Automaticamente viene effettuata la corretta impostazione, a meno che un indirizzo IP fisso per Hycleen Connect venga specificato.



# Hycleen Connect

➔ Immettere quindi l'indirizzo del sito, in cui si trova il Master , e poi l'utente locale. Dopo che il Master è stato registrato, fare clic su di esso.

1. Hycleen Asset   2. Location   3. User Register

### GeoLocation

Enter address or drag pin to the correct location

Hauptstrasse 130, 4450 Sissach, Schweiz

Site Number (optional)   Site Floor (optional)

Site Zone (optional)   Object Type (optional)

Back   **Next**

1. Hycleen Asset   2. Location   3. User Register

Lastname  ✖  
\*Lastname is required

Firstname (optional)  ✖  
\*Firstname is required

Role

Email  ✖  
\*Email is required

Phone (optional)

Back   **Register**

+GF+   CONNECT

Hycleen Connect Service   Register this location

Address

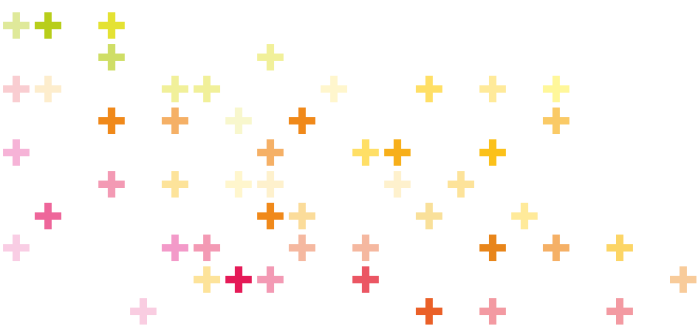
Back   **Next**

+GF+   CONNECT

ssdfs / etse   Home Page   Back to list

Master Details

Master Location



## 4. Abbonarsi a Hycleen Connect

Overview

Configuration backups

**Features and licenses**

### Hycleen Automation Modules

Unlock the expansion packages from the Hycleen Automation System. In order to generate your specific license keys, the individual MAC address of your Hycleen Master is required. You find the MAC address on your Master in settings / network.

#### One time fee

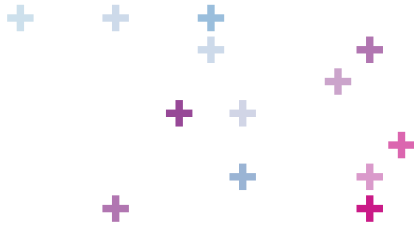
<p><b>Aktor Automation</b></p> <p>This license allows you to program the Master and Uni Controller relays and the 4-20 mA input/output from the Uni Controller. Further building and process automation is possible.</p> <p><a href="#">Order now</a></p>	<p><b>Master Relais</b></p> <p>This license allows you to program the Master Relays using the Actuator Automation application. Further building and process automation is possible.</p> <p><a href="#">Order now</a></p>	<p><b>BAC Net</b></p> <p>Unlock the BACnet communication interface. One-time activation fee, valid for 1x Hycleen Automation Master.</p> <p><a href="#">Order now</a></p>	<p><b>REST</b></p> <p>Unlock the REST API communication interface. One-time activation fee, valid for 1x Hycleen Automation Master.</p> <p><a href="#">Order now</a></p>
-----------------------------------------------------------------------------------------------------------------------------------------------------------------------------------------------------------------------------------------------------------	--------------------------------------------------------------------------------------------------------------------------------------------------------------------------------------------------------------------------	---------------------------------------------------------------------------------------------------------------------------------------------------------------------------	--------------------------------------------------------------------------------------------------------------------------------------------------------------------------

#### Monthly fee

**Hycleen Connect**

Connect your Master with Hycleen Connect cloud in order to get information from your installation from wherever you are. You will also get alarms and be able to modify parameter on the Master.

[Order now](#) from 65 EUR



# Hycleen Connect



Immettere il numero Hycleen Controller del proprio Hycleen Automation System (valvole + Uni Controller)

**Add number of valves**

Add number of valves that you are using for the Hycleen system. Added number will be checked and corrected if differences are determined.

*As a precursor and for your new subscription to the Hycleen Connect Service, we would like to offer you the first 2 months of use for free as a thank you for your interest.*

Number of valves	Price per month
<input type="text" value="1"/>	<input type="text" value="65 EUR"/>

---

**Price list**

Number of valves	Price per month
1-9 valves	65 EUR
10-20 valves	130 EUR
21-35 valves	190 EUR
36-50 valves	240 EUR