

Hyclean Connect / Remote access

Short instructions

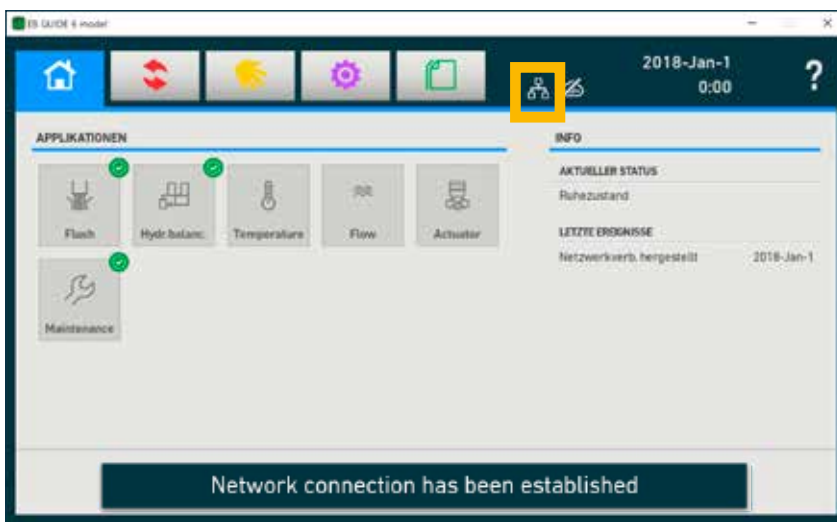
Description of the process of connecting a Hyclean Automation System to the remote access solution Hyclean Connect



1. Registration to the CONNECT hub

Prerequisite:

- Hycleen Master is installed on the object and operating or ready for operation.
- Hycleen AS Software 3.0 or a later version is installed on the Hycleen Master. All Hycleen masters from 2021 have at least software 3.0 on them. The existing software version can be seen on the master under Settings.
- Set the settings of the network connection/Internet connection on the master under „Settings/Network“ to automatic, or if a fixed IP address is preset to manual and enter this IP address (see page 9).
- Internet connection (network connection) to the Hycleen master is established. This can be seen from the status icon on the Home screen on the master (+ notification „Internet connection has been established“). The Internet connection can also be established subsequently.
- Have the MAC address and the serial number of the Hycleen master ready (see page 9).

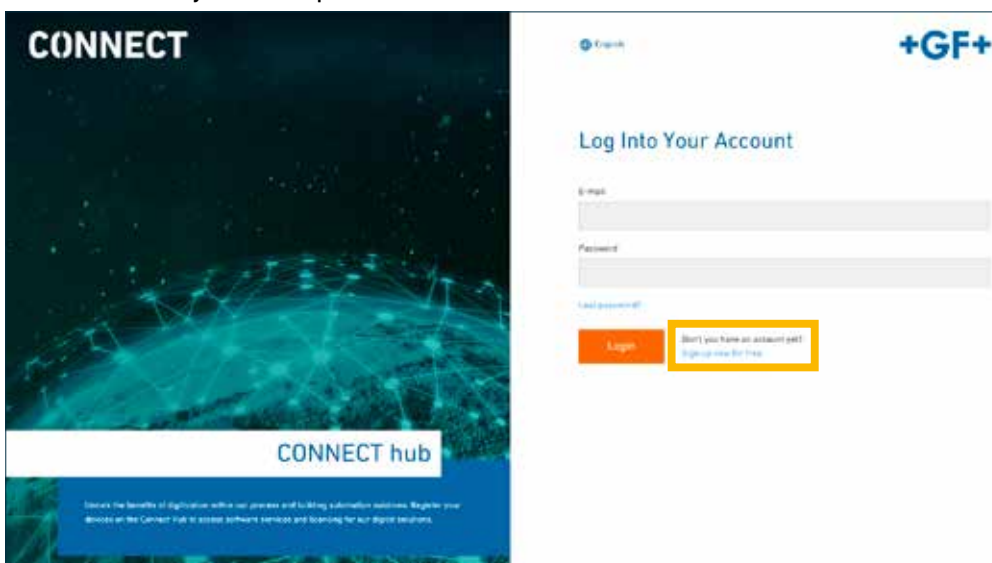


Register yourself as a user and your Hycleen Automation System at:

<https://connect.gfps.com/>

Click on „Register now“ and then on „Register“.

→ Create your own personal customer account.





➡ Enter your data:

CONNECT

English **+GF+**

Sign up now for free

When you register this company account, you will be the first CONNECT Hub user for your company and you will automatically receive administrative rights. As an administrator, you can then invite other employees from your company as users and then assign administrative rights to them. Please note: Only one user can register for each company. All other users must be invited and added by the administrator in the user management. Please complete the form to register. Your account will be activated after a successful profile creation.

Always consent to having being invited to my submitted information according to my Privacy Statement and Terms of Use so they can respond to my inquiry.
[Privacy Statement](#)
[Terms of Use](#)

[Link to help](#)

CONNECT hub

Unlock the benefits of digitization within our process and building a competitive solution. Register your business on the Connect Hub to access software services and training for our digital solutions.

Privacy Statement | Contact | Terms of Use | Help

Copyright © 2019 by Future Policy Systems Ltd. All rights reserved.

CONNECT

English **+GF+**

Registration request successful

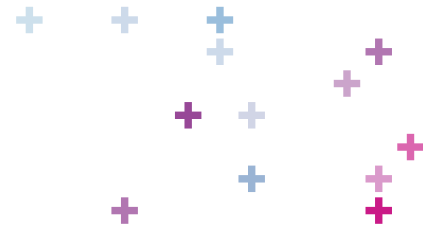
You are now registered! You will get an email shortly including verification instructions. Please follow the description in this hub.

CONNECT hub

Unlock the benefits of digitization within our process and building a competitive solution. Register your business on the Connect Hub to access software services and training for our digital solutions.

Privacy Statement | Contact | Terms of Use | Help

➡ You will receive an e-mail to confirm your e-mail address. Click on: „Verify now“.



➔ Please activate your customer account via „Verify now“

+GF+

Please activate your user account

Dear customer,

Thank you very much for registering at <https://connect.gfps.com>.
To activate your user account, please click on the following link:

Verify now

We will then process your registration. Please be aware that it may take some time before your registration is finally approved, at which point you will be granted access to <https://connect.gfps.com>. The activation link is active for 48 hours.
If your account needs a manual activation, you will receive a separate confirmation via e-mail.

Georg Fischer Piping Systems Ltd
Phone: +41 52 631 11 11
E-Mail: connect@gfps.com

www.gfps.com/global



➡ Enter your data and log on.

CONNECT

English **+GF+**

Your Email has been verified

Your email address was verified successfully. You can now login.

First name*

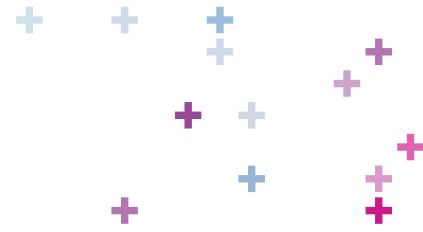
Last name*

Password*

Register

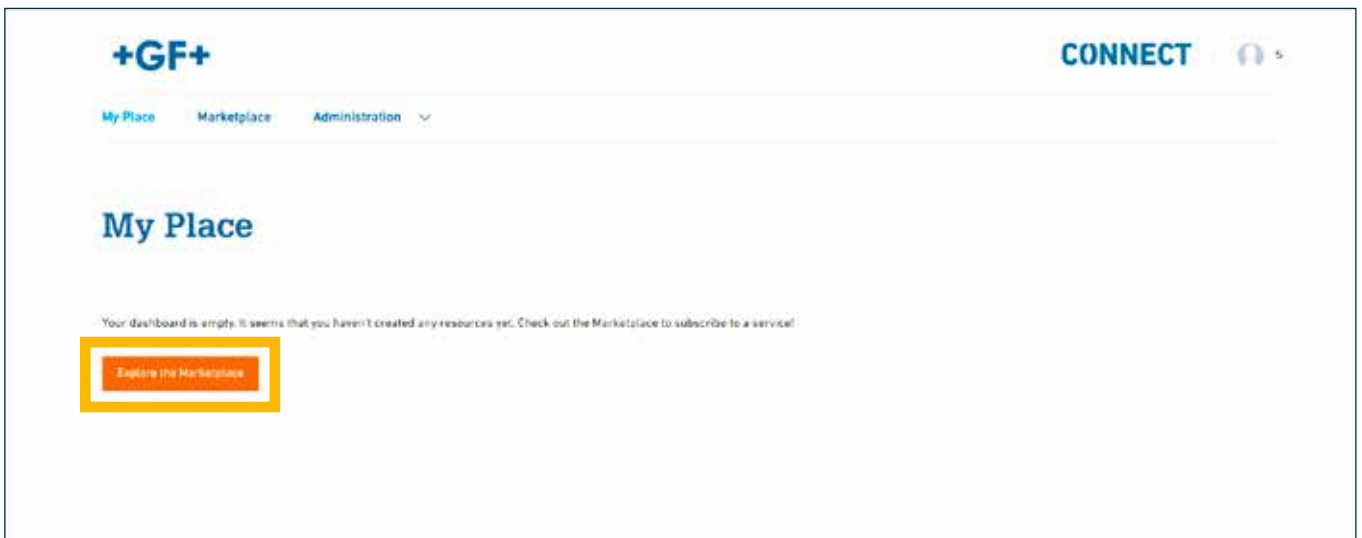
CONNECT hub

Unlock the benefits of digitalization within our process and building automation solutions. Register your devices on the Connect hub to access software services and licensing for our digital solutions.

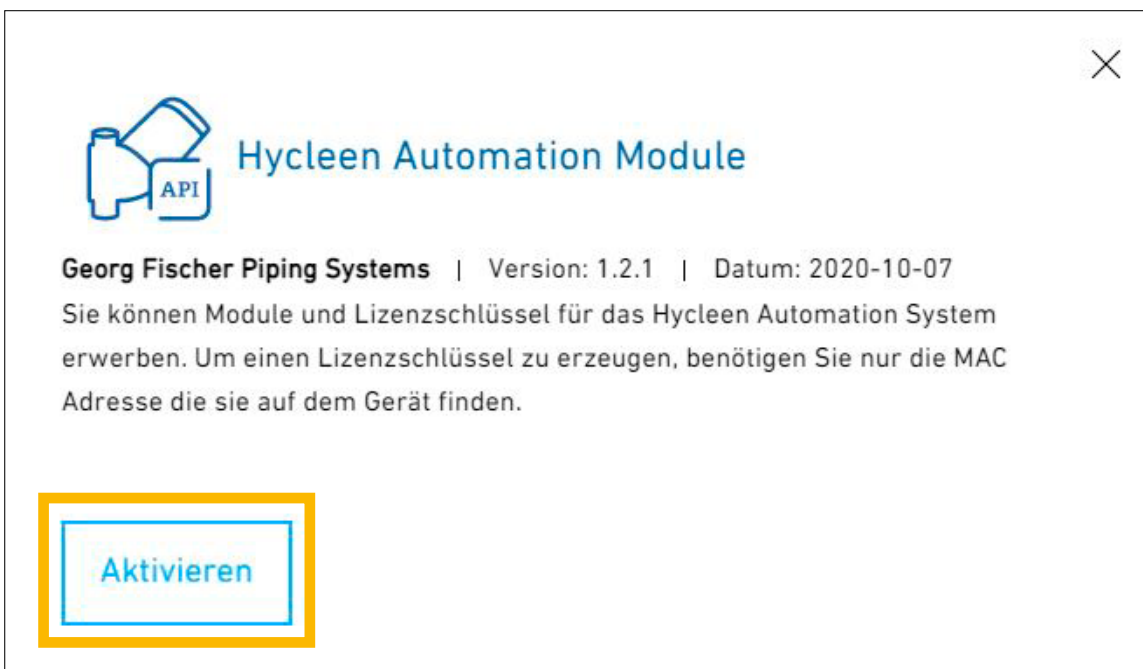


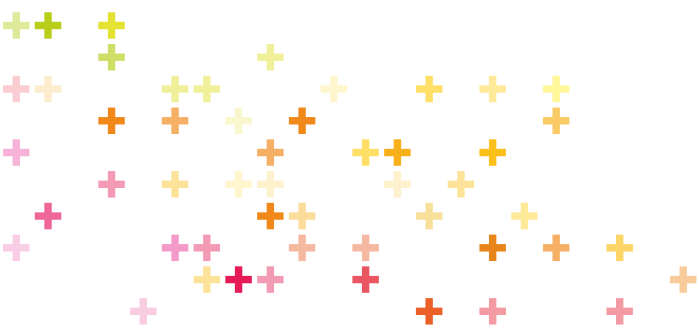
2. Register to the Hyclean Automation Module

➔ Select „Explore the Marketplace“.



➔ Select and activate the Hyclean Automation module.






Then enter your customer data



The VAT number is the tax number of the company.
Now enter your customer number (if you are already a Georg Fischer customer).



Hycleen Automation Modules

Georg Fischer Piping Systems | Version: 1.2.1 | Date: 2020-10-07
Unlock the expansion packages of the Hycleen Automation System.

Company Name *

Street * No *

City * Postal Code *

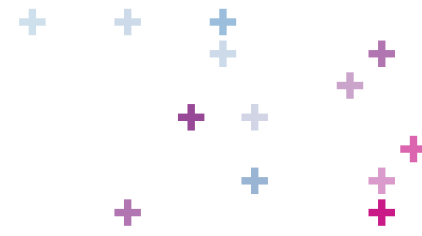
VAT Number * Customer Number

DE_____

* Mandatory field

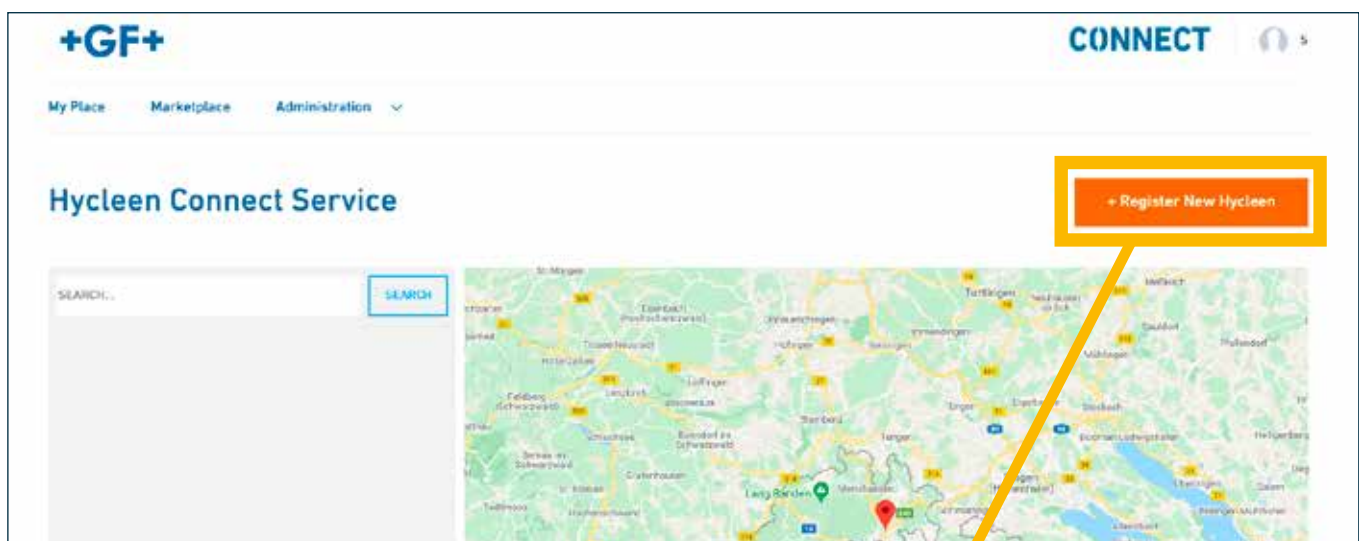


Open the Hycleen Automation Module under „My workplace“.



3. Registering your Hyclean Automation System

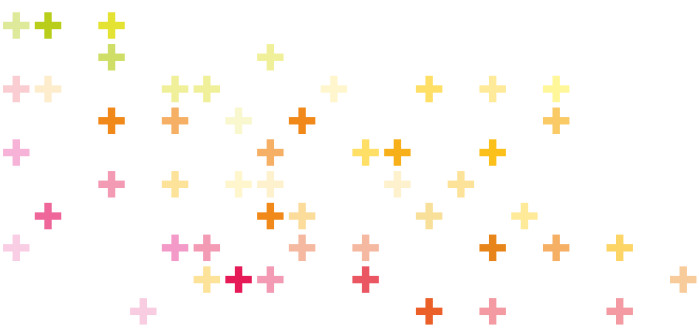
➔ Now you can register a Master „+ Register a new Hyclean“



➔ After clicking „+ Register new Hyclean Automation System „ you can enter your data.

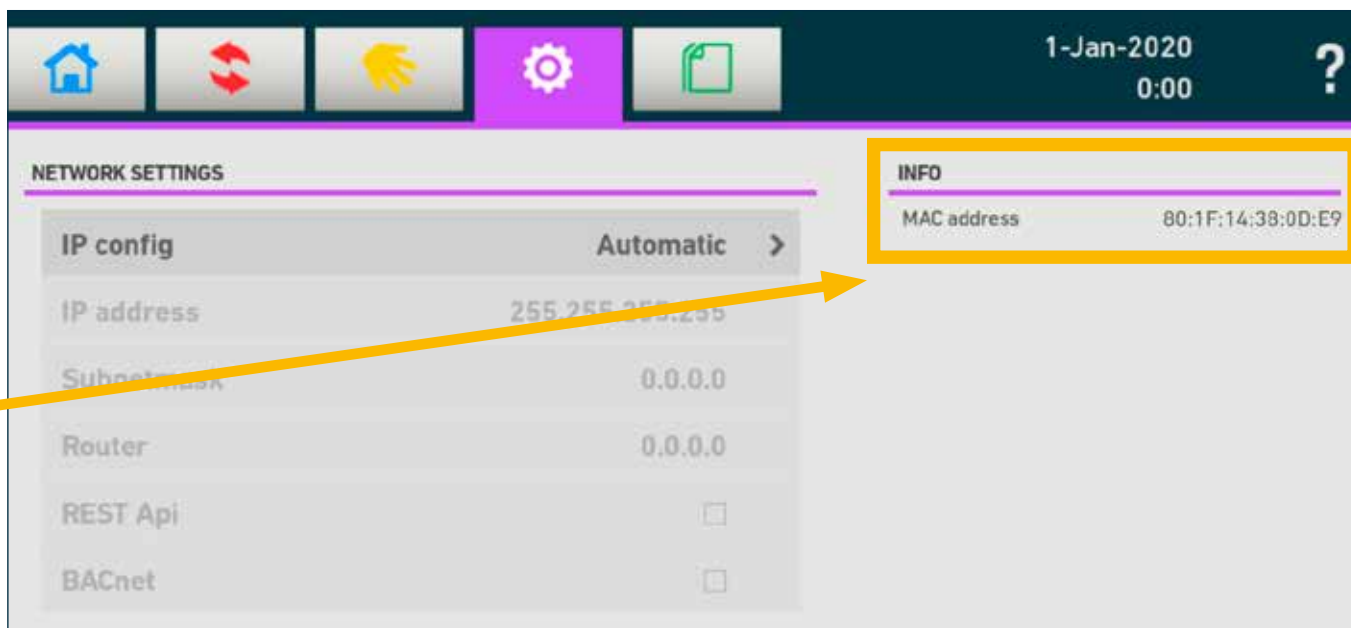
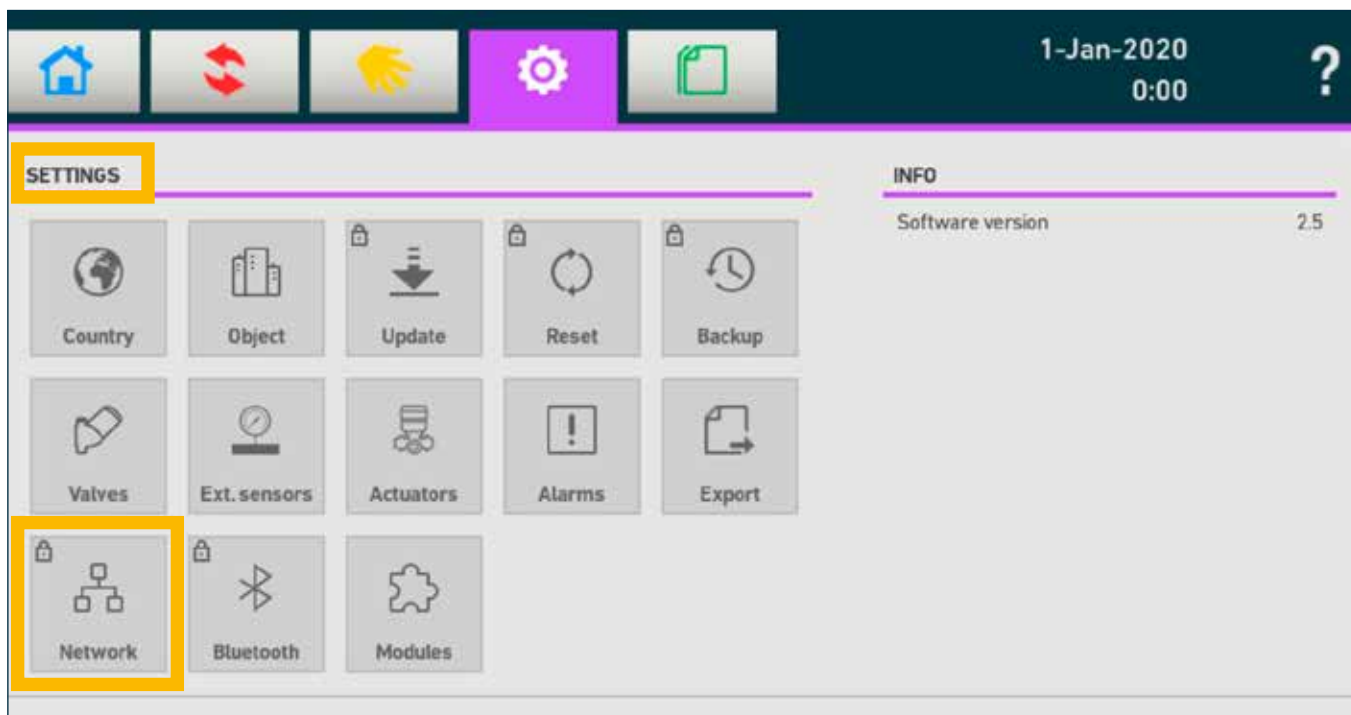
Here you have the opportunity of describing the installation in greater detail.

This name will be shown in the display on the cloud surface.



Where can you find the Master serial number and the MAC address?

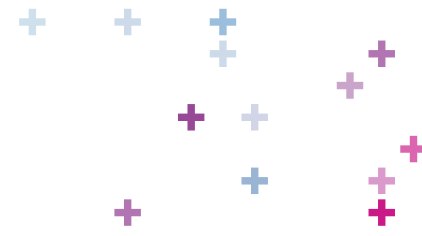
- The serial number is found on a label on the side of the Hycleen Master
- MAC address: On the Master go to the tab „settings“ and click on „network“ (password: 42).



Make sure to enter the MAC address correctly, as it is used for encrypting the licenses. If it is not entered correctly, the generated licenses will not function.



Set up the IP configuration accordingly. The correct setting is Automatic, unless a fixed IP address is specified for Hycleen Connect.



Hycleen Connect

➔ Now enter the location address, at which the Master is located, followed by the local user. As soon as the Master is registered, click on it.

1. Hycleen Asset 2. Location 3. User Register

GeoLocation

Enter address or drag pin to the correct location

Hauptstrasse 130, 4450 Sissach, Schweiz

Site Number (optional) Site Floor (optional)

Site Zone (optional) Object Type (optional)

Back **Next**

1. Hycleen Asset 2. Location 3. User Register

Lastname ✕
*Lastname is required

Firstname (optional) ✕
*Firstname is required

Role

Email ✕
*Email is required

Phone (optional)

Back **Register**

+GF+ CONNECT

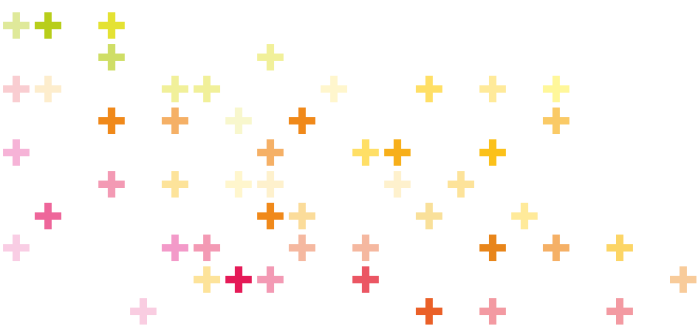
Hycleen Connect Service Register this location

+GF+ CONNECT

ssdfs / etse

Master Details

Master Location



4. Hyclean Connect subscription

Overview

Configuration backups

Features and licenses

Hyclean Automation Modules

Unlock the expansion packages from the Hyclean Automation System. In order to generate your specific license keys, the individual MAC address of your Hyclean Master is required. You find the MAC address on your Master in settings / network.

One time fee

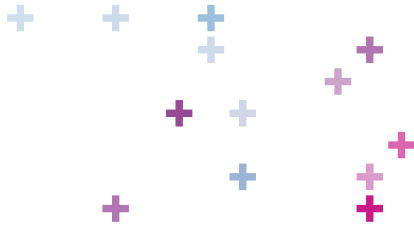
<p>Aktor Automation</p> <p>This license allows you to program the Master and Uni Controller relays and the 4-20 mA input/output from the Uni Controller. Further building and process automation is possible.</p> <p>Order now</p>	<p>Master Relais</p> <p>This license allows you to program the Master Relays using the Actuator Automation application. Further building and process automation is possible.</p> <p>Order now</p>	<p>BAC Net</p> <p>Unlock the BACnet communication interface. One-time activation fee, valid for 1x Hyclean Automation Master.</p> <p>Order now</p>	<p>REST</p> <p>Unlock the REST API communication interface. One-time activation fee, valid for 1x Hyclean Automation Master.</p> <p>Order now</p>
---	--	---	--

Monthly fee

Hyclean Connect

Connect your Master with Hyclean Connect cloud in order to get information from your installation from wherever you are. You will also get alarms and be able to modify parameter on the Master.

[Order now](#) from 65 EUR



Hycleen Connect

➔ Enter the number of Hycleen Controller of your Hycleen Automation System (valves + uni Controller)

Add number of valves

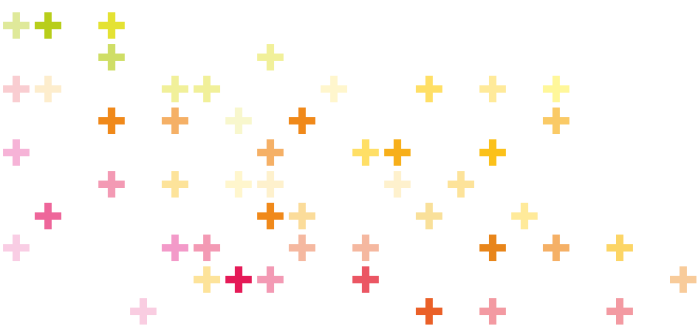
Add number of valves that you are using for the Hycleen system. Added number will be checked and corrected if differences are determined.

As a precursor and for your new subscription to the Hycleen Connect Service, we would like to offer you the first 2 months of use for free as a thank you for your interest.

Number of valves	Price per month
<input type="text" value="1"/>	65 EUR

Price list

Number of valves	Price per month
1-9 valves	65 EUR
10-20 valves	130 EUR
21-35 valves	190 EUR
36-50 valves	240 EUR



➔ Accept the terms of use and proceed to payment

Hyclean Connect

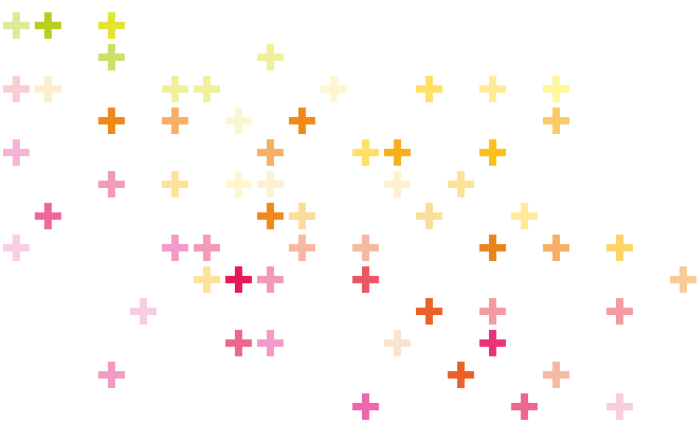
Connect your Master with Hyclean Connect cloud in order to get information from your installation from wherever you are. You will also get alarms and be able to modify parameter on the Master.

As a precursor and for your new subscription to the Hyclean Connect Service, we would like to offer you the first 2 months of use for free as a thank you for your interest.

Price		Billing address	
Price	65 EUR	Company Name	sfkjj
VAT (0%)	0 EUR	Street	sfjkl 56
Total price	65 EUR	Address	45984 4450
		Country	DE

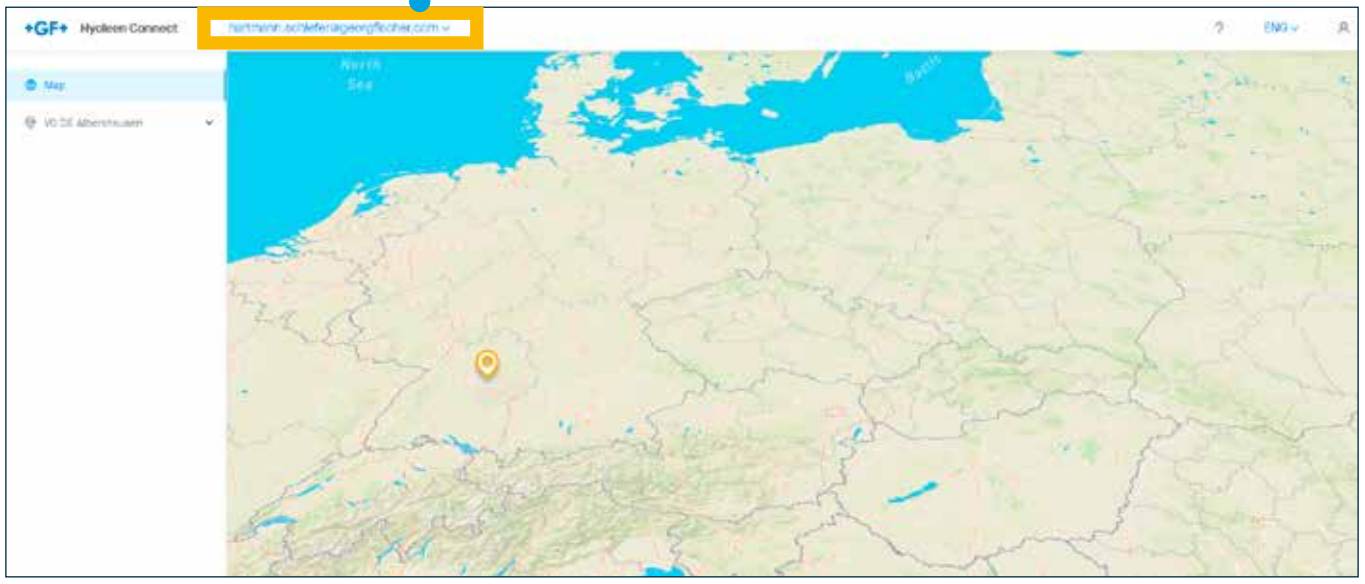
accept the Terms of Use

➔ A license file is generated, which is automatically loaded to the Hyclean Master, as soon as it is connected to the internet. The license file on the computer can be saved to be on the safe side, but is not needed for Hyclean Connect.



➔ When clicking on „Hycleen Connect“ you access the customer area and can see all Hycleen Masters connected to the cloud.

Select the environment (select the e-mail address with which you have registered).
When accessing several systems in different environments the environment can be changed here.



➔ Selecting a Hycleen Masters, to see detailed information within a system:



5. Managing access rights

→ Currently, an optimized user/access management system is still under development.

To provide additional persons with access to your Hycleen AS, please contact our customer service (tkd.jrg.ps@georgfischer.com). Provide the following information:

- Your e-mail address with which you registered on the Connect platform
- E-mail address of the user to whom you want to grant access.

6. Contact

→ In case of questions regarding

- Hycleen Connect
- Registration
- Hycleen Connect operation
- Hycleen Automation System in general

you are welcome to contact our customer service via telephone or e-mail:

+41619752340

tkd.jrg.ps@georgfischer.com

Your contact

Georg Fischer Piping Systems Ltd
Ebnatstrasse 111
8201 Schaffhausen / Schweiz

www.gfps.com

BFS Code 1161502_v1_02_2025
Production: GF BFS / SDE

The information and technical data (together „data“) contained herein are not binding unless explicitly confirmed in writing. The data does not substantiate explicit, implicit or warranted characteristics nor guaranteed properties or guaranteed durability. All data is subject to modification. The General Terms of Sale of Georg Fischer Piping Systems shall apply.

