

JRG

+GF+

Montageanleitung
Installation instructions

JRG Sanipex

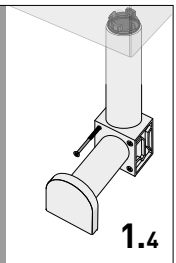
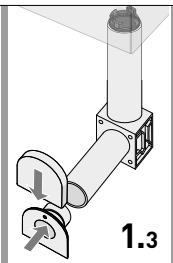
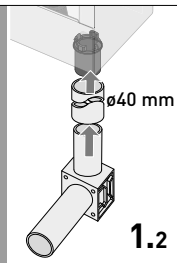
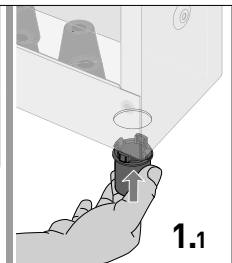
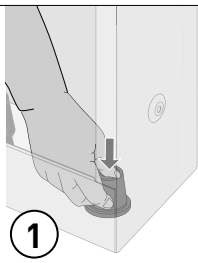
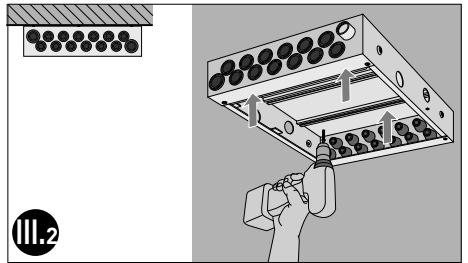
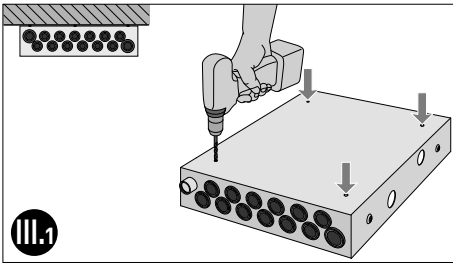
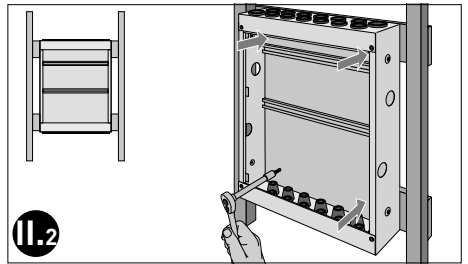
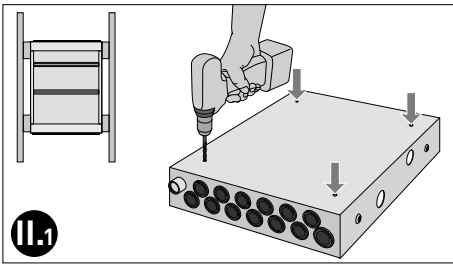
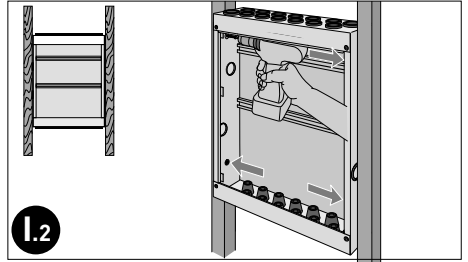
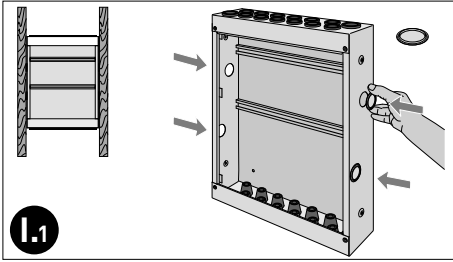
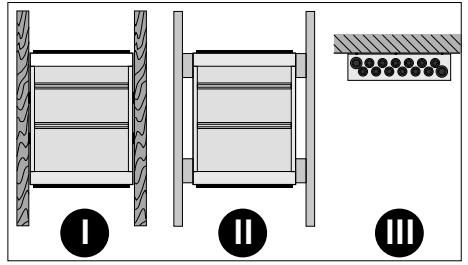
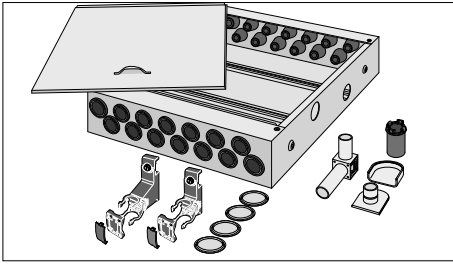
Einbaukasten

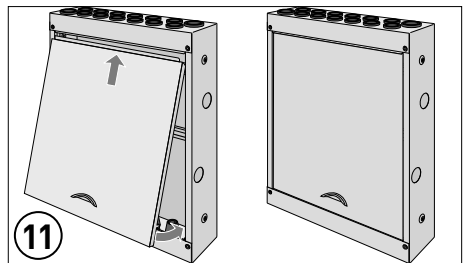
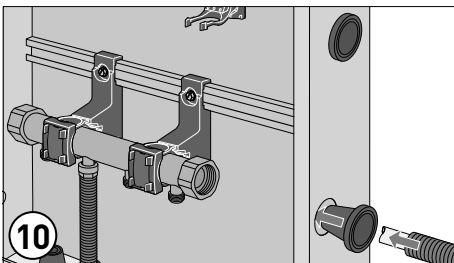
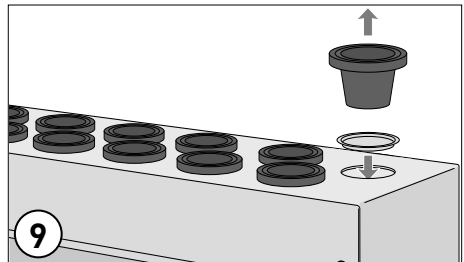
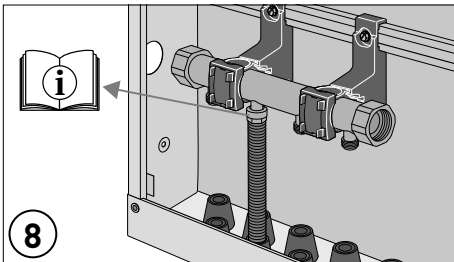
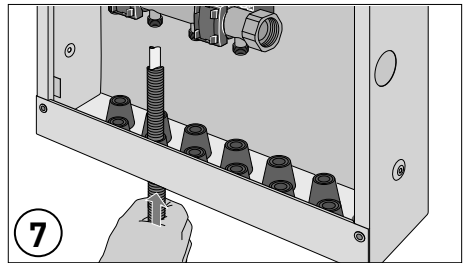
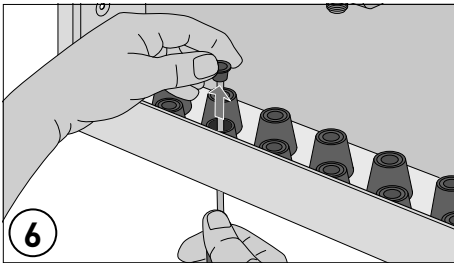
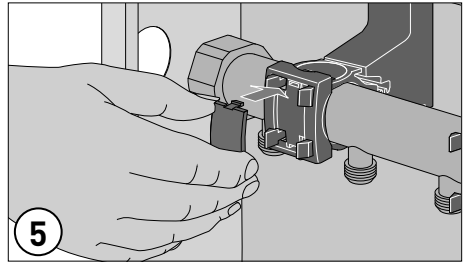
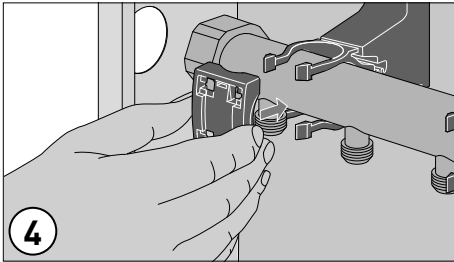
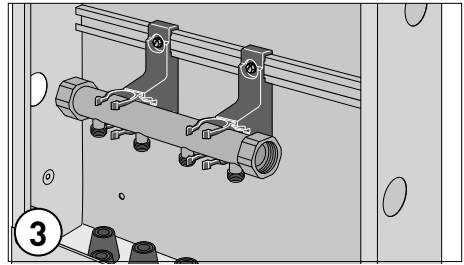
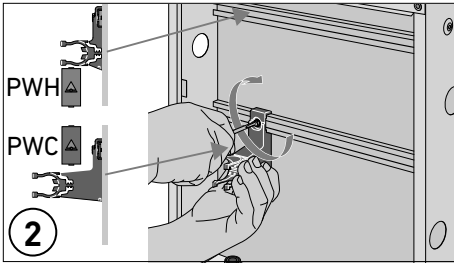
Spritzwasserdicht

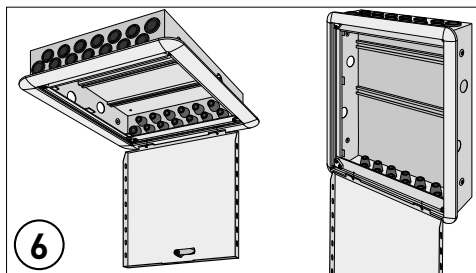
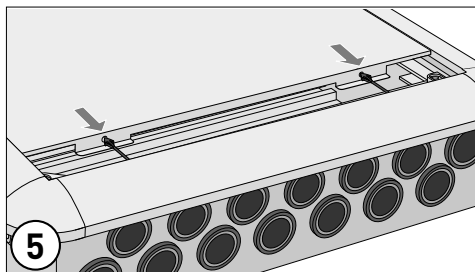
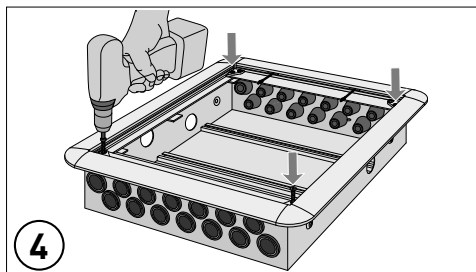
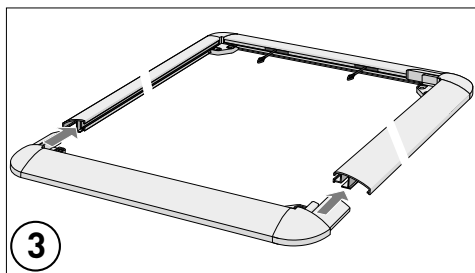
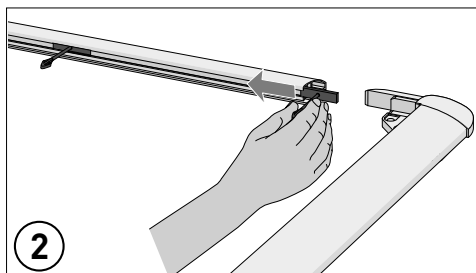
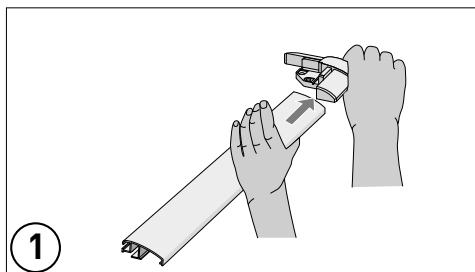
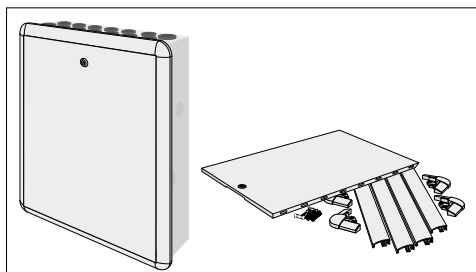
Cabinet

splash-watertight









Georg Fischer JRG AG

Hauptstrasse 130, CH-4450 Sissach

Phone +41 (0)61 975 22 22, Fax +41 (0)61 975 22 00

info.jrg.ps@georgfischer.com

www.gfps.com

Ident. Nr. 35 56 173 13 / 02.25 / ©Georg Fischer JRG AG

BFS Code 1161470_v1_02_2025

Production: GF BFS / SDE