

Fact Sheet Stormwise Retention Tank

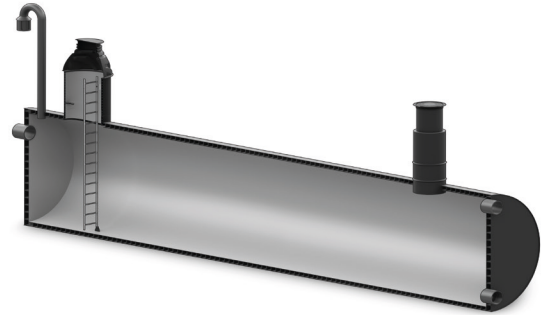
Effective solution for stormwater management

Intermediate stormwater storage and delay

There are many ways to prevent flooding caused by heavy rainfall. One effective solution is the use of a stormwater retention tank, that temporarily stores stormwater until it is either discharged by gravity after the rain subsides or pumped into the designated discharge site. This keeps water levels under control and prevents flooding. Additionally, it helps mitigate erosion caused by high water flows.

A retention tank enables the monitoring of water volume, sludge removal, and regular inspection.

Installation is efficient, requiring only trench excavation, tank installation, and backfilling at the site. The stormwater tank is completely leak-tight, making it suitable for installation in groundwater areas or below the groundwater level.



Compliant with local regulations

Accelerates your project timeline and simplifies approvals by authorities.



Customizable and prefabricated

Saves up to 50% installation time and reduces risks for installation errors.



Compact and robust

Allows flexible placement, even under traffic load.



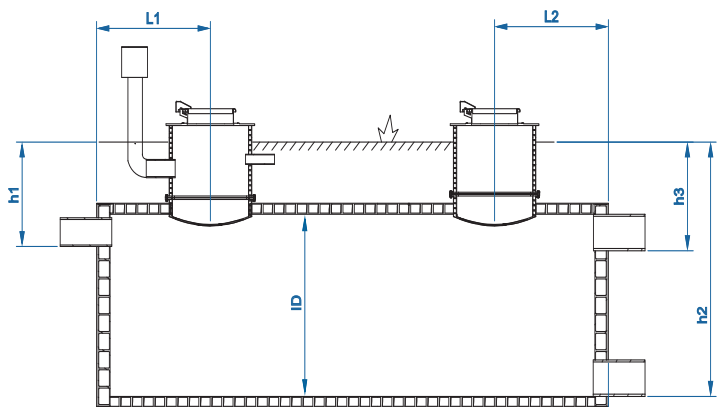
Convenient and accessible

For reliable operation and easy maintenance.

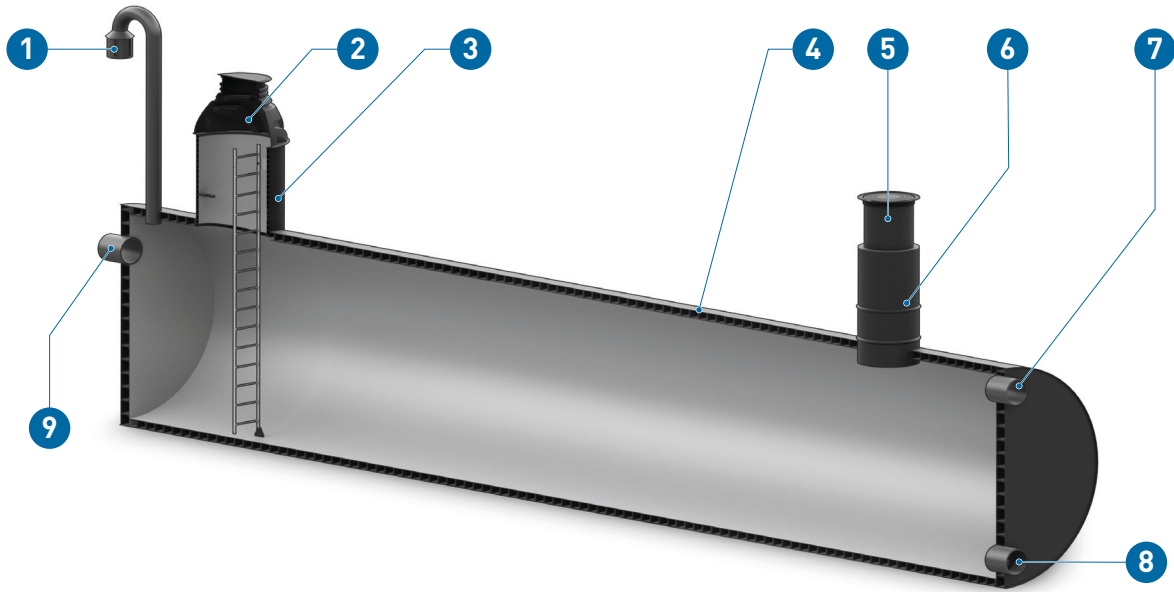
Technical data

Application	Stormwater retention
Material	PE 100
Color	Black (outside), white (inside)
Ring stiffness	SN2, SN4, SN8 or by agreement
Tank inner diameter (ID)	Customizable
Tank length (L)	Customizable
Inlet position below ground level (h1)	Customizable
Outlet position below ground level (h2)	Customizable
Overflow position below ground level (h3)	Customizable
Position of the first riser (L1)	Customizable
Position of the second riser (L2)	Customizable

Approvals	Nordic Poly Mark, Cert. nr. 4075
Standards	EN 13476, EN 13598



Components



Pos.	Designation	Pos.	Designation
1	Ventilation	6	Riser 2
2	Riser top 1	7	Overflow
3	Riser 1	8	Outlet
4	Tank body	9	Inlet
5	Riser top 2		

Customizable components

- Tank inner diameter, length and volume
- Inlet type and height
- Outlet type and height
- Overflow type and height
- Number and positions of the risers
- Riser height
- Riser top types

Riser top types and sizes (selection)

Type A	Type B	Type C	Type D	Type E
ø860/800 With safety gate	600x600 metal 800x800 metal	ø600 GE 40tn ø630 GE 40tn	ø630 GE 40tn ø800 GE 40tn	ø600 no lid ø800 no lid ø1000 no lid
				

Tank dimension

ID [mm]	800	1000	1200	1400	1500	1600	1800	2000	2200	2400	2500	3000	3400	3500	4000
Volume [m³/m]	0.5	0.8	1.1	1.5	1.7	2.0	2.5	3.1	3.8	4.5	4.9	7.1	9.0	9.6	12.6

Optional components

- Ventilation
- Anchoring

Item number

Item no.	Description
35001138346	Stormwater retention tank



Speak to an expert
Discover how Stormwise solutions can transform your stormwater management.
www.gfps.com/stormwise

The information and technical data (altogether "Data") herein are not binding, unless explicitly confirmed in writing. The Data neither constitutes any expressed, implied or warranted characteristics, nor guaranteed properties or a guaranteed durability. All Data is subject to modification. The General Terms and Conditions of Sale of Georg Fischer Piping Systems apply.

