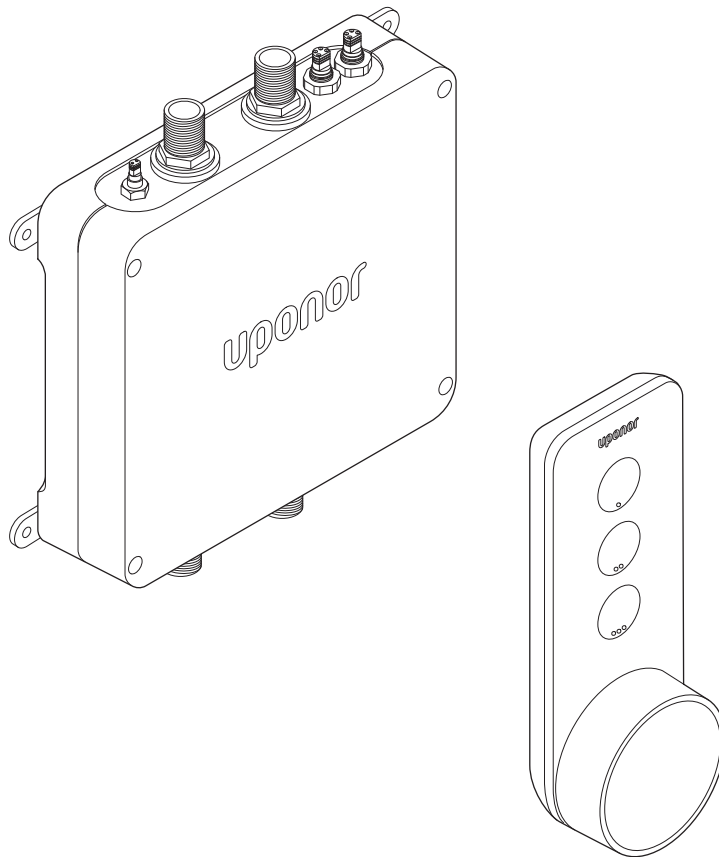


## Uponor I-Shower

EN Installation and operation manual



# Table of contents

|          |   |           |
|----------|---|-----------|
| <b>1</b> | <b>Copyright and disclaimer.....</b>  | <b>3</b>  |
| <b>2</b> | <b>Preface.....</b>   | <b>4</b>  |
| 2.1      | Safety instructions.....  | 4         |
| 2.2      | Correct disposal of this product (Waste Electrical and Electronic Equipment)..... | 4         |
| <b>3</b> | <b>System description.....</b>  | <b>5</b>  |
| 3.1      | System overview.....  | 5         |
| 3.2      | Installation examples.....  | 6         |
| <b>4</b> | <b>Installation.....</b>  | <b>7</b>  |
| 4.1      | Installation with Uponor Combi Port E-Pro.....                                    | 7         |
| 4.2      | Installation of the stand-alone version.....                                      | 7         |
| 4.3      | Electrical installation.....  | 8         |
| 4.4      | Installation of the remote controller.....  | 9         |
| 4.5      | Complete the installation.....  | 10        |
| <b>5</b> | <b>Operation.....</b>   | <b>11</b> |
| 5.1      | Emergency shut-off.....   | 11        |
| 5.2      | Overview controls.....  | 11        |
| 5.3      | Basic functions.....  | 11        |
| 5.4      | Special functions.....  | 12        |
| <b>6</b> | <b>Maintenance.....</b>   | <b>14</b> |
| <b>7</b> | <b>Troubleshooting.....</b>   | <b>15</b> |
| 7.1      | List of fault codes.....  | 15        |
| 7.2      | Contact the installer.....  | 15        |
| <b>8</b> | <b>Technical data.....</b>  | <b>16</b> |
| 8.1      | Hydraulic specifications.....   | 16        |
| 8.2      | Tapping capacity.....   | 16        |
| 8.3      | Electrical specifications.....  | 16        |
| 8.4      | Dimensional drawings.....   | 17        |

# 1 Copyright and disclaimer

This is a generic, European-wide document version. The document may show products that are not available in your location for technical, legal, commercial, or other reasons.

For any questions or queries, please visit the local Uponor website or speak to your Uponor representative.

“Uponor” is a registered trademark of Uponor Corporation.

Uponor has prepared this document solely for information purposes, images are only representations of the products. The content (text and images) of the document is protected by worldwide copyright laws and treaty provisions. You agree to comply with these when using the document. Modification or use of any of the content for any other purpose is a violation of Uponor's copyright, trademark, and other proprietary rights.

This disclaimer applies to, but is not limited to, the accuracy, reliability, or correctness of the document.

The presumption for the document is that the product related safety instructions are fully obeyed. The following requirements apply to the Uponor product (including any components) as covered by the document.

- The system (combination of products) is selected and designed by a competent planner. It is installed and put into operation by a licensed and/or competent installer in compliance with the instructions provided by Uponor. Locally applicable building and plumbing codes/regulations have been obeyed.
- Temperatures, pressure and/or voltage limits according to product and design information have not been exceeded.
- The product remains in its originally installed location and is not repaired, replaced, or interfered with, without prior written consent of Uponor.
- The product is connected to potable water supplies or compatible plumbing, heating and/or cooling systems approved or specified by Uponor.
- The product is not connected to or used with third-party products, parts, or components except for those approved or specified by Uponor.
- The product does not show evidence of tampering, mishandling, insufficient maintenance, improper storage, neglect, or accidental damage before installation and being put into operation.

While Uponor has made all effort to ensure that the document is accurate, the company does not guarantee or warrant the accuracy of the information. Uponor reserves the right to change the product portfolio and the related documentation without prior notification, in line with its policy of continuous improvement and development.

**Always make sure that the system or product complies with current local standards and regulations. Uponor cannot guarantee the full compliance of the product portfolio and related documents with all local regulations, standards, or working methods.**

**Uponor disclaims all warranties related to the content of this document, expressed or implied, to the fullest extent permissible unless otherwise agreed or statutory.**

**Uponor is under no circumstances liable for any indirect, special, incidental, or consequential damage/loss that results from the use or inability to use the product portfolio and related documents.**




**This disclaimer and any provisions in the document do not limit any statutory rights of consumers.**

# 2 Preface

This installation and operation manual describes how to install and operate the components of the system.


## 2.1 Safety instructions

### Safety messages used in this document

|   |   |
|---|---|
|  | <b>Warning!</b><br>Risk of injury and damage. Ignoring warnings can cause personal injury and/or damage to products and other property. |
|  | <b>Caution!</b><br>Risk of malfunctions. Ignoring cautions can cause the product to not operate as intended.                            |
|  | <b>Note</b><br>Important information to the section in the manual.  |

Uponor uses safety messages in the document to indicate special precautions required for the installation and operation of any Uponor product.

### Safety measures



|   |   |
|---|---|
|  | <b>Note</b><br>For safe and proper use, obey the instructions given in this document. Keep them for future reference. |
|---|---|



The installer and operator agree to comply with following measures regarding Uponor products:

- Read and obey the instructions and processes in the document.
- The installation must be performed by a qualified installer in accordance with local regulations.
- Uponor is not liable for modifications not specified in this document.
- Switch off all connected power supplies before starting any wiring work.
- Do not expose the Uponor components to flammable vapours or gases.
- Do not use water to clean electrical Uponor products/ components.


Uponor is not liable for damage caused by ignoring the instructions in this document or the applicable building code.

### Power

|   |  |
|---|--|
|  | <b>Warning!</b><br>Uponor system power supply: 230/400 V AC, 50 Hz.<br>In case of emergency, immediately disconnect the power.   |
|  | <b>Warning!</b><br>Risk of electrical shock! Electrical installation and service behind secured 230 V AC covers must be done under the supervision of a qualified electrician. |

|   |   |
|---|---|
|  | <b>Caution!</b><br>If the power cable is damaged, it must be replaced by the manufacturer, its service agent, or similarly qualified personnel. |
|  | <b>Caution!</b><br>Devices to disconnect the power mains must be installed in accordance with local regulations.                                |

### User group

|   |  |
|---|--|
|  | <b>Warning!</b><br>The following persons must not use this product without supervision or instruction by a person responsible for their safety. <ul style="list-style-type: none"><li>• persons with reduced physical, sensory or mental capabilities</li><li>• children</li></ul> |
|---|--|

## 2.2 Correct disposal of this product (Waste Electrical and Electronic Equipment)

|   |   |
|---|---|
|  | <b>Note</b><br>Applicable in the European Union and other European countries with waste separation systems. |
|---|---|



This icon on the product, or in the related documents indicates that it should not be disposed with household waste. Please, recycle responsibly to support the sustainable use of resources and prevent possible harm to human health and/or the environment.

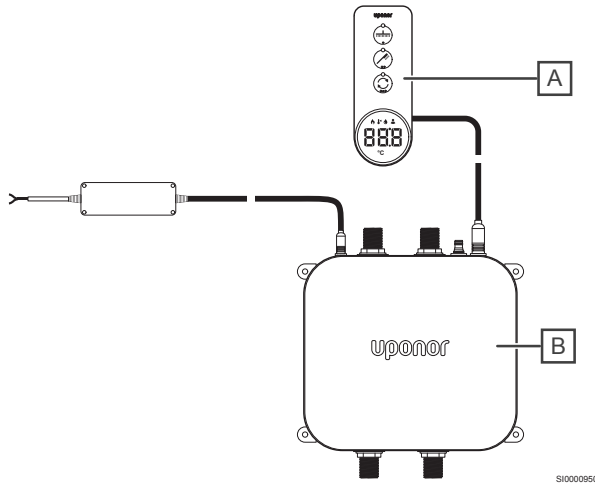
Household users should contact the retailer where they purchased this product, or their local government office, for details on where and how they can take it for recycling.

Business users should contact their supplier and check the terms and conditions of the purchase contract. Do not dispose this product with other commercial waste.

# 3 System description

## 3.1 System overview

The Uponor I-Shower manages dual shower systems (two outlets). Comfort and user friendliness for temperature and flow control of domestic hot water are the most important features.



The system consists of two main items:

- Remote controller (A)
- Electronic mixing box (B)

## Remote controller

Basic functions active while showering:

- Supply of domestic water for the overhead and hand shower
- Change of temperature or flow rate of the domestic water

Special functions active only when the shower is off:

- The system automatically detects all connected outlets (Calibration)
- Three user profiles accessible
- Key-lock
- Hygienic flush
- Cleaning
- reset

For more information see the chapter: "Operation"

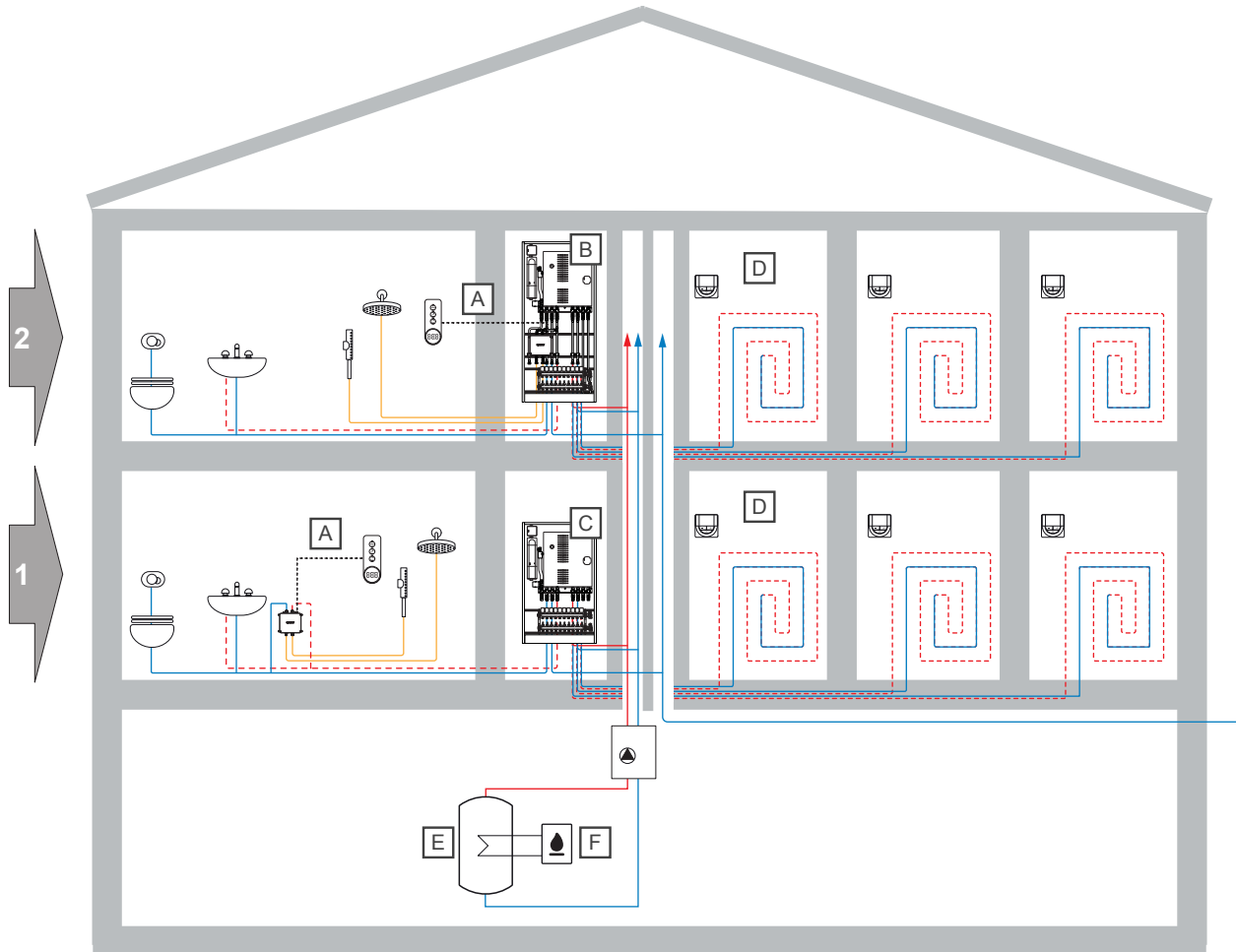
## Mixing box

The mixing box is the hydraulic connection unit. It provides correct temperatures and flow rates as set at the remote controller.

Installation:

- as a stand-alone unit
- in combination with the Uponor Combi Port E-Pro heat interface unit



## 3.2 Installation examples




SD0000430

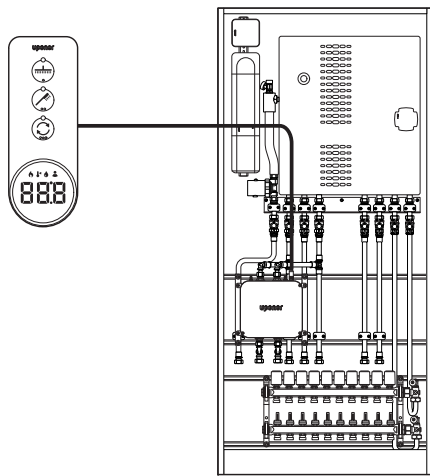
| Item | Description   |
|------|---|
| 1    | Example set-up with the mixing box as stand-alone unit                    |
| 2    | Example set-up with the mixing box in the Uponor Combi Port E-Pro cabinet |
| A    | Uponor I-Shower   |
| B    | Uponor Combi Port E-Pro cabinet for Uponor I-Shower                       |
| C    | Uponor Combi Port E-Pro cabinet   |
| D    | Underfloor heating  |
| E    | Buffer storage  |
| F    | Heat source   |

# 4 Installation

|   |   |
|---|---|
|  | <p><b>Warning!</b></p> <p>Required work must be performed by a qualified installer in accordance with local regulations. This includes electrical connections, installations, operational setup and maintenance.</p>                            |
|  | <p><b>Caution!</b></p> <p>Observe the technical planning documentation.</p> <p>The pressure drop of all components in the installation must be summed up and the remaining tapping capacity confirmed.</p> <p>See chapter: "Technical data"</p> |

## 4.1 Installation with Uponor Combi Port E-Pro

|   |   |
|---|---|
|  | <p><b>Note</b></p> <p>The mixing box for for the Uponor I-Shower is fully preinstalled and prewired in the Uponor Combi Port E-Pro cabinet.</p> <p>This option must be ordered via the Uponor customer service.</p> |
|---|---|



SI0000953


Uponor Combi Port E-Pro is a prefabricated heat interface unit suited for use in multifamily houses or large residential buildings. The ready-to-install unit supplies domestic hot water, control of the domestic heating system, measurement of heating energy and water consumption.

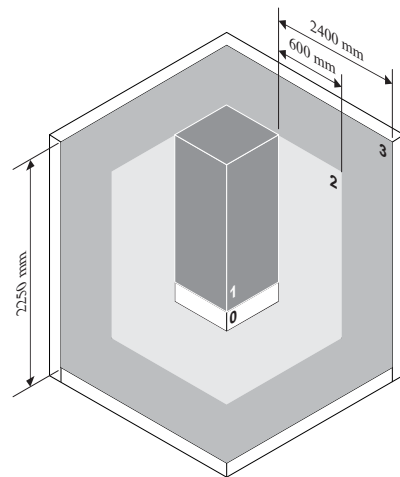
See the IOM Uponor Combi Port E-Pro for further details on the hydraulic installation.

The installation of the Uponor I-Shower remote controller is described in this document.

## 4.2 Installation of the stand-alone version

### Prepare for installation of the stand-alone mixing box

|   |  |
|---|--|
|  | <p><b>Warning!</b></p> <p>The Uponor I-Shower mixing box, the power supply and the electrical connections must be installed outside of zones "0" and "1".</p> <p>This is valid as long as the installation complies with national regulations.</p> |
|---|--|

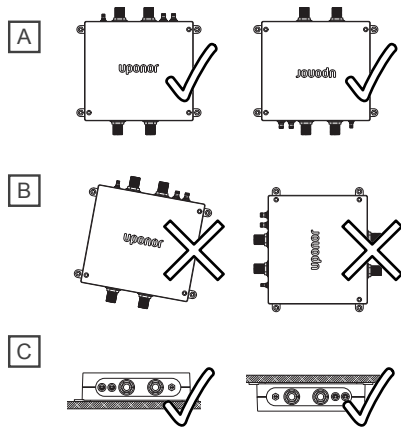


SI0000954

- The mixing box can operate with an unbalanced inlet pressure of up to 4 bar. Pressure stabilisers to compensate for pressure differences between the cold and warm water inlets are not required.
- Make sure that the mixing box can be mounted close to a 230 V AC wall socket. A junction box (IP44) must be installed as connection to the power mains.
- Make sure that the installed mixing box components are protected from running or dripping water.
- To facilitate maintenance we recommend installing shut-off valves upstream of the mixing box.
- Cables installed in walls should be protected by conduit or sheathing to allow removal during maintenance.
- The mixing box should not be installed in locations where the ambient temperature could exceed 65 °C or where there is a risk of freezing.
- Vent the system in which the mixing box is installed. Observe the relevant installation/operation instructions.

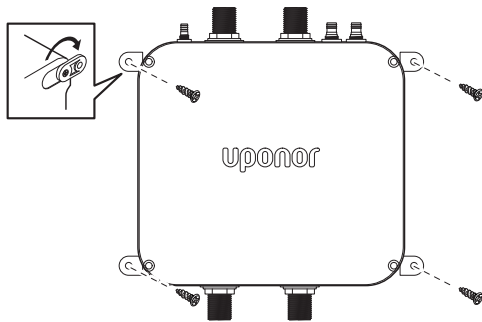
## Installation of the mixing box

The mixing box can be installed on the wall or ceiling.



S10000955

| Item | Description  |
|------|--|
| A    | Wall installation, vertical (inlets face up or down)                                 |
| B    | Do not install the mixing box at an angle or horizontal (inlets face left or right). |
| C    | Ceiling installation   |

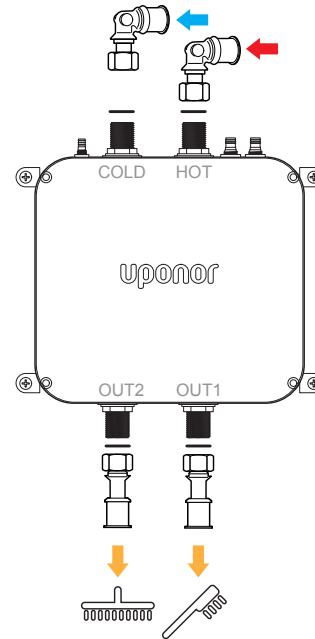


S10000960

Install the mixing box with four screws. Consider the dimensions.  
See chapter: "Technical data"

## Connecting the mixing box

|   |  |
|---|--|
| ! | <b>Note</b>  |
|   | Do not use flexible hoses for the installation.<br>Do not use refurbished or used parts for the installation.              |
| ! | <b>Note</b>  |
|   | Default connection:  |
|   | <ul style="list-style-type: none"> <li>Outlet 1 = "OUT1" = hand shower</li> <li>Outlet 2 = "OUT2" = head shower</li> </ul> |
|   | If only one outlet is needed, connect outlet 1 and close off outlet 2.   |



S10000961

### Inlets "HOT" and "COLD":

Insert the strainer mesh (part of delivery) into each inlet and connect Uponor MLC fittings 20x2,25 - G1/2"SN.

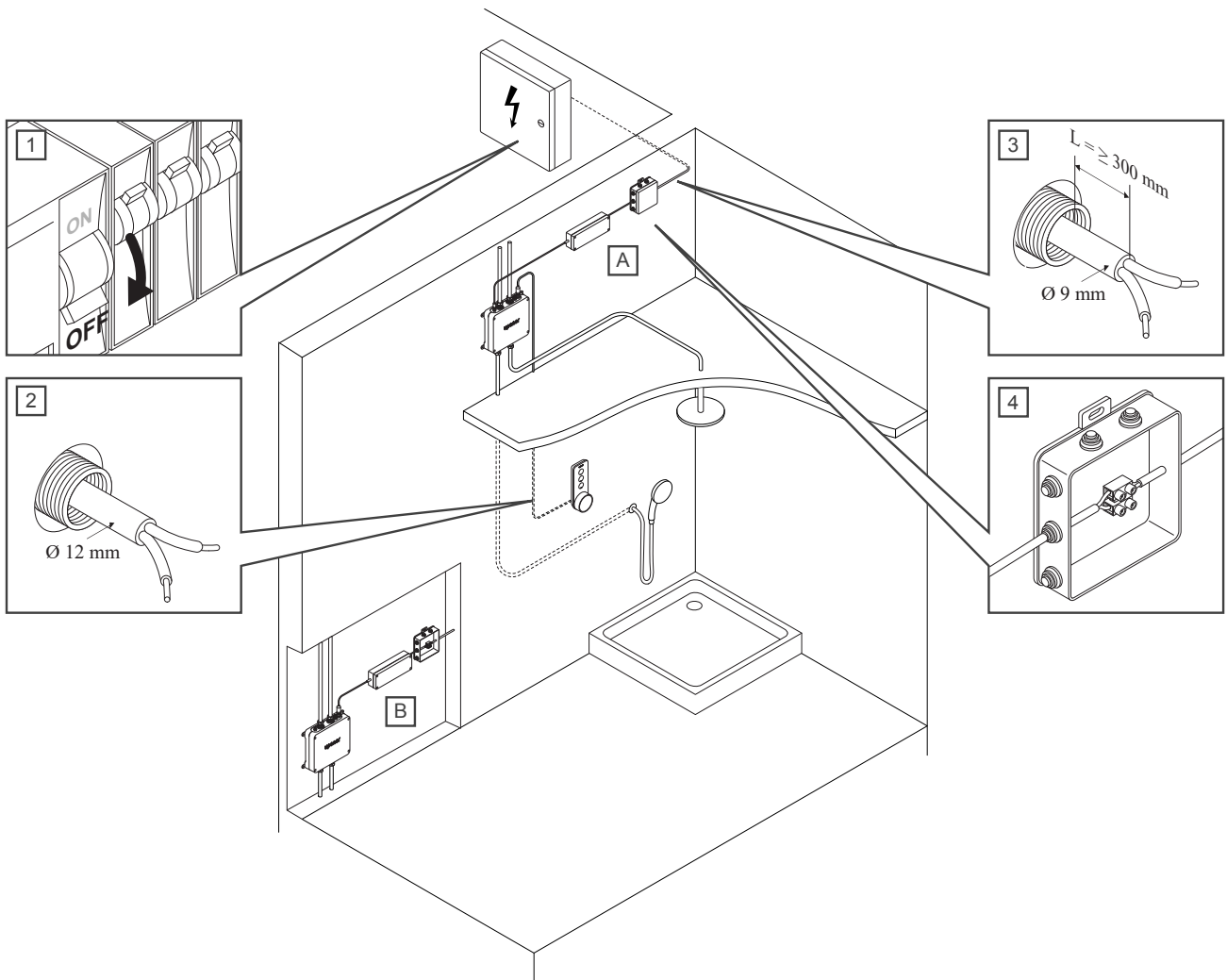
### Outlets "OUT1" and "OUT2":

Connect Uponor MLC fittings 20x2,25 - G1/2"SN to each outlet.

- "OUT1" = hand shower
- "OUT2" = head shower

## 4.3 Electrical installation

|             |  |
|-------------|--|
| <b>STOP</b> | <b>Warning!</b><br>Risk of electrical shock! Electrical installation and service behind secured 230 V AC covers must be done under the supervision of a qualified electrician. |
| <b>!</b>    | <b>Caution!</b><br>Devices to disconnect the power mains must be installed in accordance with local regulations.   |
| <b>!</b>    | <b>Caution!</b><br>Make sure that the used contact separation provides complete isolation for overvoltage category III.  |
| <b>!</b>    | <b>Caution!</b><br>Provide a residual current device (RCD-switch) in the fuse box.   |



SD0000431

1. Switch off the power mains.
2. Provide an empty conduit (diameter 20 mm) for the remote controller cable. Install the cable (10 m) connecting remote controller and mixing box.
3. Provide an empty conduit (diameter 20 mm). Install the adapter cable (1 m) to the power supply.
4. Install a junction box (IP44) for the power supply cable. Place it outside of zone "0" and "1", for example:  
**A** - above a suspended ceiling  
**B** - inside of a pre-wall installation

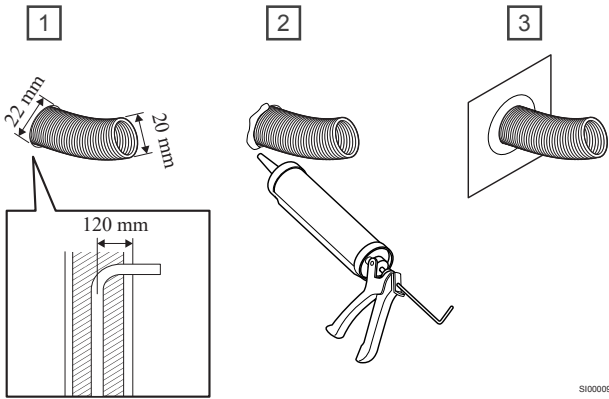
## 4.4 Installation of the remote controller

### Prepare for installation of the remote controller

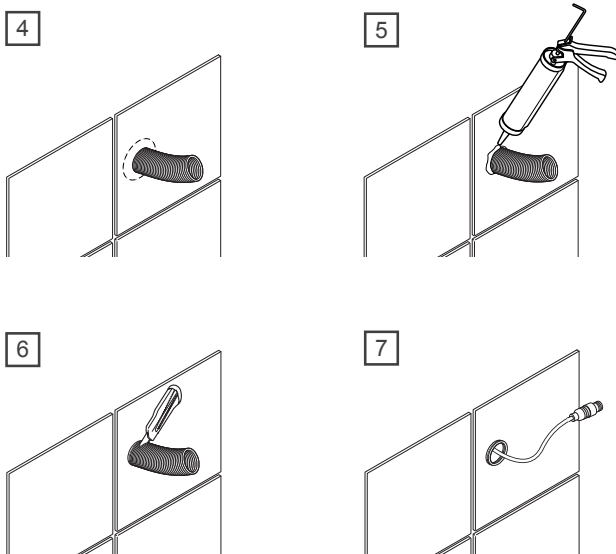
- Make sure that the remote controller can be mounted in the bathroom near the shower.
- The remote controller must be installed and sealed on the shower wall following local standards and regulations. Ambient temperature: 5–65 °C
- Take into account the connection cable between remote controller and mixing box when planning the installation.
- The remote controller runs with 12 V DC.
- Make sure there is no 230 V AC wall socket, cables or devices near the shower.
- Verify the contents of the package with the packing list.
- Read and observe the contents of this IOM (Installation and operation manual).

### Installation of the remote controller

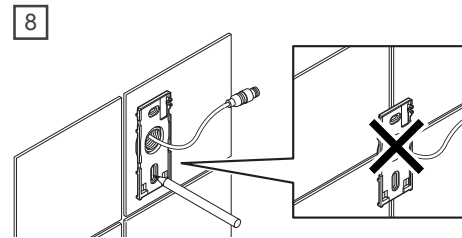
|  |  |
|--|--|
|  | <b>Caution!</b><br>Consider local regulations for placing electrical devices in sanitary rooms like bathrooms.   |
|  | <b>Caution!</b><br>Plan the tiling pattern to make sure the remote controller will not be installed on or right next to a seam.  |
|  | <b>Note</b><br>The conduit for the cable (10 m) connecting the remote controller to the mixing box must already be installed in-wall.<br><br>The installation height for the remote controller is ca 1,5 m. Observe EN 18534 for sealing requirements. |



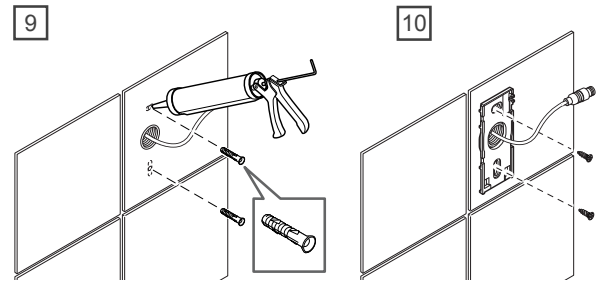
1. Make sure the empty conduit (diameter 20 mm) exits the wall in the right place.
2. Seal the gap between wall and conduit with silicone.
3. Install a sealing membrane over the conduit and stick the transition sheet to the wall neatly.



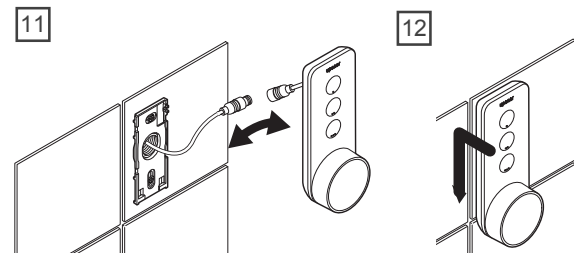
4. Install the tiles. Drill a hole, slightly larger than the conduit diameter, in the tile as precisely as possible.
5. Seal the gap between tile and conduit with silicon.
6. Shorten the conduit.
7. Pull the cable connecting remote controller and mixing box into the conduit.



8. Use the back plate to mark the two drill holes on the wall. Do not place the remote controller on a tile seam.



9. Drill the two 6 mm holes and insert the wall plugs. Use silicon to seal the holes.
10. Attach the back plate to the wall with 2 screws.



11. Connect the remote controller to the cable.
12. Click the remote controller onto the back plate.

## 4.5 Complete the installation

1. Make sure that the hot- and cold water lines have been flushed in accordance with local regulations. This will prevent contaminants and assembly residues from affecting the valve function.
2. Check the tap water connections for tightness.
3. Check the system for leaks. This is done as part of the completion of the entire domestic hot water system.
4. Switch on the power mains.
5. Check the remote controller is working. See chapter: "Operation".
6. Flush the Uponor I-Shower by opening the shower heads to remove any contaminants and assembly residues. See instructions for hydraulic flushing in the chapter: "Operation".
7. Calibrate the system. The mixing box automatically detects the maximum available shower flow rates and how many outlets are connected. See chapter: "Operation".

# 5 Operation

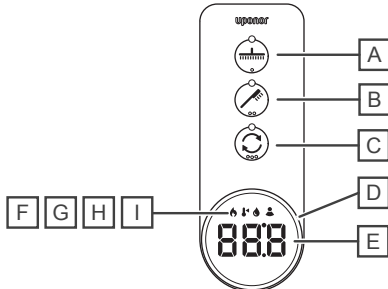
|  |  |
|--|--|
|  | <p><b>Warning!</b></p> <p>The following persons must not use this product without supervision or instruction by a person responsible for their safety.</p> <ul style="list-style-type: none"> <li>• persons with reduced physical, sensory or mental capabilities</li> <li>• children</li> </ul> |
|  | <p><b>Note</b></p> <p>If no cold water is available in the system, the Uponor I-Shower automatically shuts down to avoid injury through scalding. This is in accordance with EN 1111 safety standards.</p>   |

## 5.1 Emergency shut-off

Emergency shut-off of the I-Shower system.

1. Switch the RCD-switch for the Uponor I-Shower in the fuse box to "OFF".
2. The system shuts down completely.
  - The electric power is cut off.
  - All valves in the mixing box close and no water is supplied to the shower heads.

## 5.2 Overview controls

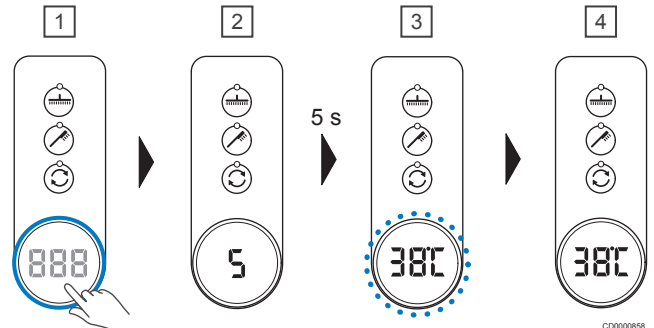


CD0000869

| Item | Description  |
|------|--|
| A    | Button: pressing selects the head shower, LED light is on when the head shower is active   |
| B    | Button: pressing selects the hand shower, LED light is on when the hand shower is active   |
| C    | Button: <ul style="list-style-type: none"> <li>• pressing short switches through the modes "F" to "I", LED of mode light is on when active</li> <li>• pressing long enters the menu</li> </ul> |
| D    | Rotary-ring: turning selects values and functions  |
| E    | Button: pressing confirms the current selection displayed<br>Button display: shows the current value   |
| F    | Preheating mode  |
| G    | Temperature mode   |
| H    | Flow rate mode   |
| I    | User selection mode  |

## 5.3 Basic functions

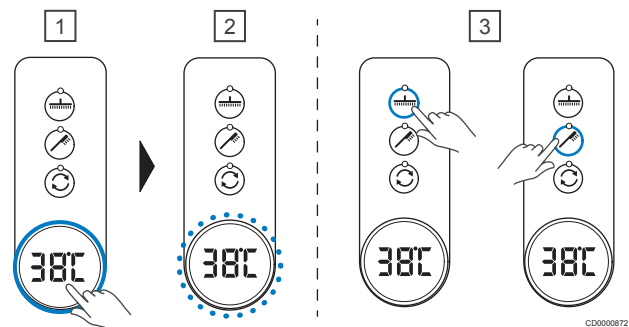
### Preheating



CD0000858

1. Press button "E" long to preheat the water.
2. A five second countdown starts.
3. After five seconds water runs from all outlets while the water is preheated.  
The rotary-ring (D) flashes until the preset temperature (default setting 38 °C) is reached.
4. When the water temperature reaches preset temperature the water stops.

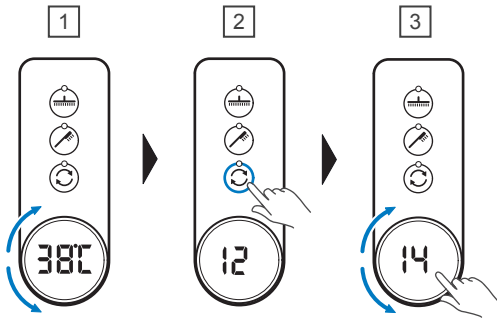
### Start shower



CD0000872

1. Press button "E" short to start the shower on default user (hand shower, 38 °C).  
The water starts running immediately.
2. The rotary-ring (D) flashes until the preset temperature is reached.
3. Press button "A" or "B" to switch between head and hand shower.

## Change temperature or flow rate



CD0000860

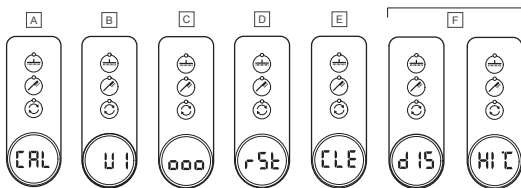
1. While in temperature mode (G), turn the rotary-ring (D) to set the water temperature.
2. Press button "C" short to change from the temperature mode (G) to the flow rate mode (H).
3. Turn the rotary-ring (D) to set the flow rate.

## 5.4 Special functions

### Note

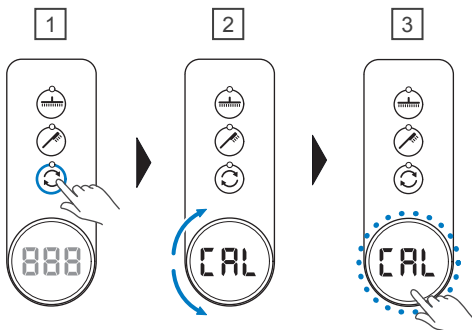
The special functions like key-lock, reset and cleaning can only be used when the Uponor I-Shower is in standby mode.

## Overview special functions



| Item | Description    |
|------|----------------|
| A    | Calibration    |
| B    | Select user    |
| C    | Key-lock       |
| D    | Reset          |
| E    | Cleaning       |
| F    | Hygienic flush |

## Calibration



CD0000857

1. Press button "C" long to access the menu.
2. Turn the rotary-ring (D) until the display reads "CAL" for calibration.

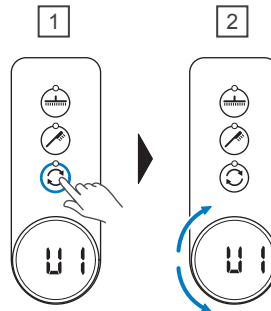
3. Press button "E" long to start the calibration. It flashes for six seconds. The system automatically detects the maximum flow rate available and how many outlets are connected.

## Select users and assign specifics

### Note

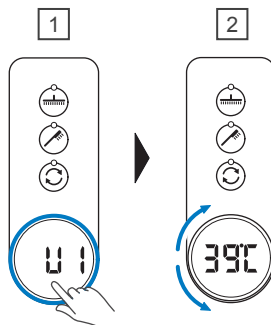
Press button "E" anytime:

- short, to stop the shower.
- long, to save the settings.



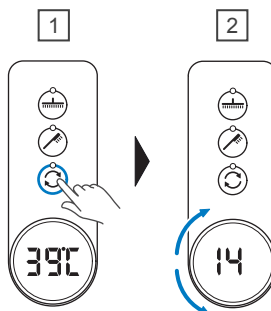
CD0000862

1. Press button "C" long to enter the menu.
2. Turn the rotary-ring (D) to select the user (U1, U2 or U3).



CD0000863

1. Press button "E" long to select the preheat mode (F) for the selected user.
2. Set the temperature.



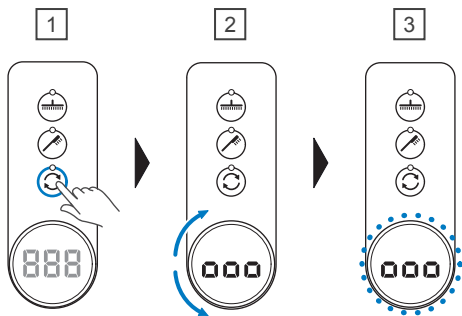
CD0000864

1. Press button "C" short to change to flow rate mode (H).
2. Set the flow rate.

Select head shower or hand shower outlet as preferred by the user.

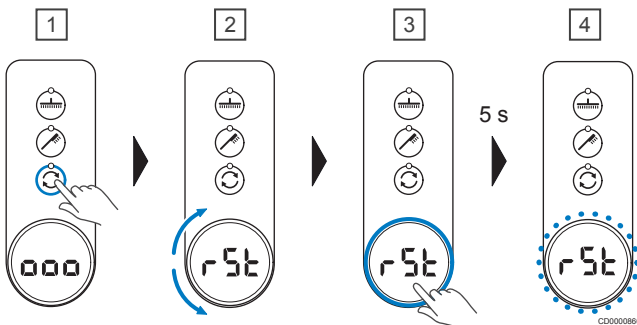
## Key-lock

Use the key-lock when cleaning the remote controller.



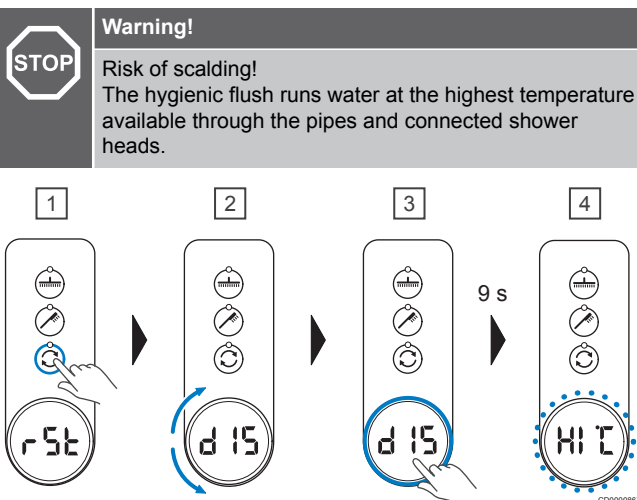
1. Press button "C" long to enter the menu.
2. Turn the rotary-ring (D) to select the key-lock "000".
3. Press button "E" to activate the key-lock. The rotary-ring (D) flashes and the remote controller is locked for 10 minutes. To cancel, press button "E" short.

## Reset to factory settings



1. Press button "C" long to enter the menu.
2. Turn the rotary-ring (D) to select reset "rSt".
3. Press button "E" long to activate the reset. A five second countdown starts. To cancel during the countdown, press button "E" short.
4. After the countdown the rotary-ring (D) flashes. All programmed settings revert to the factory default settings.

## Hygienic flush

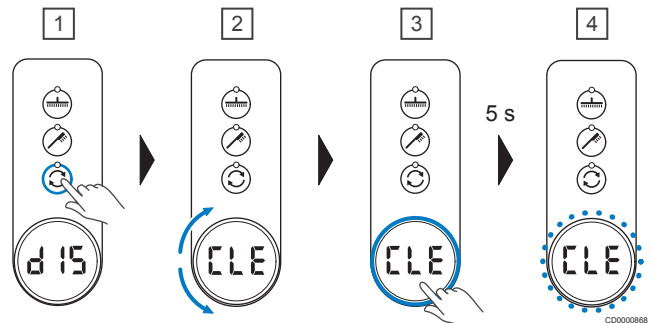


1. Press button "C" long to enter the menu.
2. Turn the rotary-ring (D) to select hygienic flush "diS".

3. Press button "E" long to activate the hygienic flush. A nine second countdown starts. To cancel during the countdown, press button "E" short.
4. After the countdown the rotary-ring (D) flashes. The hygienic flush runs water at the highest temperature available through the shower (head and hand shower simultaneously, if connected) for three minutes. The flushing ends with a 20 second cold water flush.

## Cleaning

To facilitate cleaning pulsating water runs through the connected shower heads.



1. Press button "C" long to enter the menu.
2. Turn the rotary-ring (D) to select cleaning "CLE".
3. Press button "E" long to activate the cleaning. A five second countdown starts. To cancel during the countdown, press button "E" short.
4. After the countdown the rotary-ring (D) flashes. The cleaning function runs pulsating cold and hot water through the shower (head and hand shower simultaneously, if connected) for 20 seconds each.

|             |  |
|-------------|--|
| <b>STOP</b> | <b>Warning!</b>  |
|             | <b>Risk of scalding!</b>   |
|             | The hygienic flush runs water at the highest temperature available through the pipes and connected shower heads. |

# 6 Maintenance



## Caution!

Maintenance has to be carried out by qualified personnel according to local standards.

1. Make sure that the Uponor I-Shower and its components have not been modified.
2. Make sure that the installation has been done obeying the instructions given in the documentation.
3. Do a visual check for all connections (tap water and electrical wiring).
4. Make sure all functions of the remote controller work.
5. Do a shower test with head shower and hand shower.
6. If there is an alarm, see the chapter "Troubleshooting".
7. If the mixing box is integrated in the Uponor Combi Port E-Pro cabinet, consider the relevant documentation.
8. Use the key-lock function, for example during cleaning.

# 7 Troubleshooting

## 7.1 List of fault codes

| Fault code           | Fault  | Fault description  | Solution  |
|----------------------|--|--|---|
| A01                  | Cold water leakage   | The system detects a cold water leak in standby mode. This means the cold water valve is not closed properly, probably due to dirt accumulated inside it.            | Use the "Cleaning"-function several times.  |
| A02                  | Hot water leakage  | The system detects a hot water leak in standby mode. This means the cold water valve is not closed properly, probably due to dirt accumulated inside it.             | Use the "Cleaning"-function several times.  |
| A03                  | Cold water failure   | During standard operation the system detects an issue in the cold water installation. The system shuts down immediately in accordance with EN 1111 safety standards. | Make sure cold water reaches the inlet. If the issue persists, remove the strainer mesh in the inlet connection and clean or replace it.  |
| A04                  | Hot water failure  | During standard operation the system detects an issue in the hot water installation. The system only supplies cold water.  | Make sure hot water reaches the inlet. If the issue persists, remove the strainer mesh in the inlet connection and clean or replace it.   |
| A05                  | Hot water temperature too low                                  | The hot water temperature at the mixing box inlet is below the minimum target temperature. The system supplies the maximum temperature possible.                     | Make sure the hot water supply functions and the settings are correct.  |
| A06                  | Cold water temperature too high                                | The cold water temperature is above 28 °C, the maximum temperature for planned operation.  | If the issue is caused by the climate, installing a water cooler is the only solution.<br>If it is not the climate, make sure no hot water is flowing back into the cold water pipes. Should hot water flow back into the cold water pipes, install check-valves on all mixers (electronic, non-electronic, thermostatic and non-thermostatic) in the same network. |
| A07                  | Temperature sensor malfunction                                 | The temperature measured by one of the sensors is outside the expected operating range.  | This can be caused by the sensor or the electronic circuit board.<br>Please contact the installer.  |
| A09                  | Hygienic flush failure   | The system does not reach the minimum target temperature while running the hygienic flush function.  | Bring the boiler to the correct temperature to make sure the water temperature is high enough at the sensor (on the mixing box).  |
| A10                  | Preheating failure   | The system does not reach the minimum target temperature while running the preheating flush function.  | Do a check of the minimum hot water temperature and the maximum cold water temperature.   |
| A12                  | Measuring failure at hot water flow                            | There is no correct reading at the hot water inlet.  | Restart the system.   |
| A13                  | Measuring failure at cold water flow                           | There is no correct reading at the cold water inlet.   | Restart the system.   |
| A14                  | Risk of freezing   | During operation the system detects temperatures below +5 °C.  | Increase the temperature at the inlet to more than +5 °C.   |
| E01                  | Communication error  | Communication between the remote controller and the system is interrupted. This may be due to incorrect hydraulic or electrical installation.                        | Check the hydraulic and electrical installation.  |
| Display remains dark | The display on the remote controller does not work.            | The remote controller is not connected correctly.  | Check the connection of the cable between remote controller and mixing box.   |
|                      | The remote controller does not show all the connected outlets. | The calibration to detect the connected outlets was not completed.   | Start the calibration process.  |
|                      | Flow rate is too low   | The flow rate at the mixing box inlets is too low.   | Increase the the domestic pressure in the installation.   |

## 7.2 Contact the installer

Contact the installer in case of a malfunction. Prepare the following before contacting the installer:

- Installation report
- List of alarms, including time and date of occurrence

# 8 Technical data

## 8.1 Hydraulic specifications

**Note**  
Differential pressure controllers are mandatory in applications with pressure > 400 kPa (4 bar).  
Recommended pressure: 300 kPa (3 bar)  
Recommended shower heads: shower performance heads marked ca. 9–20 l/min

**Note**  
Depending on the water temperature difference between cold and hot water inlet, the optimum control range can vary.

| Item                                  | Value  |
|---------------------------------------|--|
| Hydraulic connection                  | ½" MT with flat gasket   |
| Medium                                | Domestic water   |
| Domestic water temperature            | 5–44 °C  |
| Operating pressure                    | 200–400 kPa (2–4 bar)  |
| Maximum dynamic differential pressure | 200 kPa (2 bar)  |
| Flow rate mixed water                 | Output outlet 1: 4–24,5 l/min<br>Output outlet 1 + 2: 4–26 l/min |

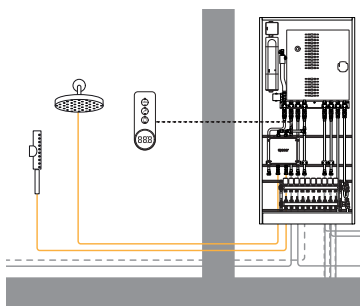
## 8.2 Tapping capacity

**Note**  
To achieve a comfortable tapping capacity, the recommended minimum flow pressure at the Uponor Combi Port E-Pro should be 2,5–4,0 bar. The maximum pipe length from the Uponor Combi Port E-Pro to the head shower should be less than 5 m (20x2,25 mm)

See the diagram:

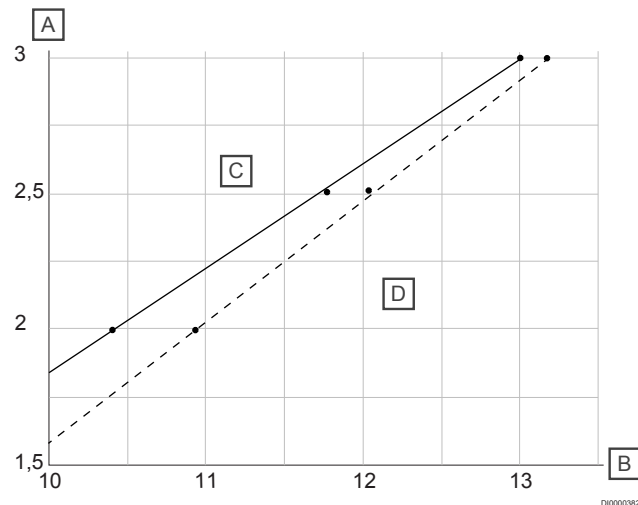
"Achievable tapping capacity"

The diagram shows the achievable tapping performance, depending on the flow pressure at the Uponor Combi port E-Pro and the pipe length between the Uponor Combi Port E-Pro and the head shower.



SI0000965

## Achievable tapping capacity

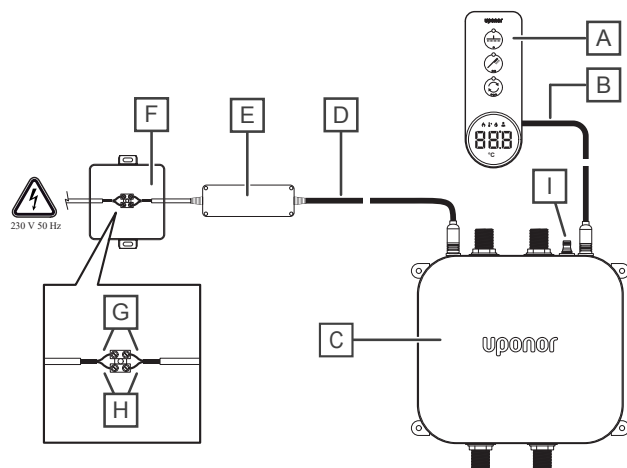


SI0000382

| Item | Description   |
|------|---|
| A    | Flow pressure at the Uponor Combi Port E-Pro [bar]                        |
| B    | Tapping capacity at the head shower [l/min]                               |
| C    | Uponor Combi Port E-Pro 25 - Uponor I-Shower, pipe length 5 m (20x2,25)   |
| D    | Uponor Combi Port E-Pro 25 - Uponor I-Shower, pipe length 3,5 m (20x2,25) |

## 8.3 Electrical specifications

| Item                              | Value                                      |
|-----------------------------------|--|
| Maximum electric power            | <= 40 W                                    |
| Supply voltage                    | Primary: 230 V 50 Hz<br>Secondary: 12 V DC |
| Power connector remote controller | 2 pin socket                               |

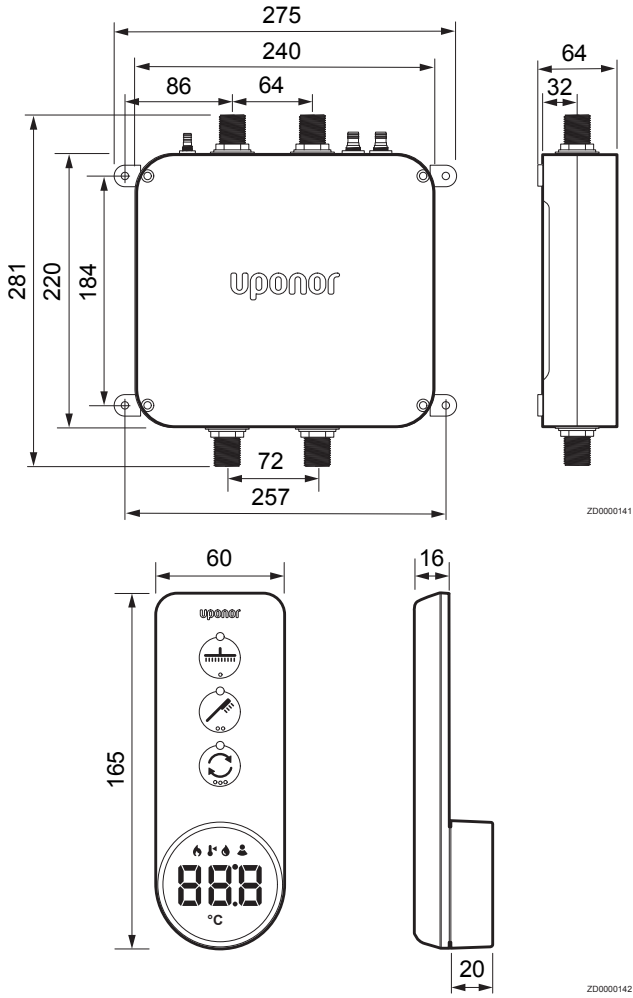


SI0000951

| Item | Description                             |
|------|---|
| A    | Remote controller                       |
| B    | Cable (10 m)                            |
| C    | Mixing box                              |
| D    | Adapter cable to the power supply (1 m) |
| E    | Power supply 230 V 50 Hz / 12 V DC      |

| Item | Description                              |
|------|--|
| F    | Junction box on site (IP44)              |
| G    | Blue cable (N)                           |
| H    | Brown cable (L)                          |
| I    | Optional: Connector to Uponor Controller |

## 8.4 Dimensional drawings



# Uponor

**Uponor GmbH**

Industriestraße 56,  
D-97437 Hassfurt, Germany

1186717 v2\_01\_2026\_EN  
Production: Uponor/DCO/JLI

Uponor reserves the right to change the product portfolio and the related documentation without prior notification, in line with its policy of continuous improvement and development.



[www.uponor.com](http://www.uponor.com)