

GF EcoMate

30% energy savings - 0% risk



Introducing GF EcoMate

Save Energy Cut CO₂ Protect Value

Upgrade Existing Buildings with GF EcoMate

Many existing buildings still rely on outdated heating systems—often fossil-based—resulting in high energy consumption, elevated CO₂ emissions, and rising operational costs. Others are shifting to alternatives like district heating, heat pumps, or hybrid solutions, which bring new challenges in cost efficiency, system control, and regulatory compliance. With stricter environmental regulations, real estate owners face financial risks when their buildings fail to meet new sustainability standards. Meanwhile, traditional Building Management Systems (BMS) come with high upfront and operational costs, limiting their accessibility.

GF EcoMate revolutionizes heat source across all these scenarios. By combining intelligent software with IoT sensors, it optimizes heating system performance in real time, regardless of the energy source. GF EcoMate adapts to the needs of each building, no matter if the goal is to reduce emissions, lower operating costs, or balance both.

This non-invasive solution delivers an average of 30% energy savings by leveraging real-time occupancy insights and weather forecasting for precise energy adjustments. Designed for light commercial buildings, it also features a unique business model: a risk-free contracting service based on shared cost savings, with no upfront hardware investment required.



Benefits

Built Around Your Goals

GF EcoMate works across all major heat sources, from gas systems to district heating and heat pumps, delivering targeted results based on your priorities. Reduce emissions, cut energy costs, or strike the right balance depending on your setup.

It's a smart solution for building owners and facility managers looking to simplify operations while achieving measurable, real-time savings. No hardware investment. No complexity. Just transparent, risk-free optimization.





Guaranteed Energy Savings

Reduce heating energy consumption by an average of 30% with real-time energy monitoring and automated optimization



Optimized Carbon Footprint

Lower CO₂ emissions (reduction of approximately 30%) while meeting ESG goals



Increased Real Estate Value

Protect assets by ensuring compliance with environmental regulations



No Upfront Investment

Risk-free model with savings-based service fees. Sensors and software are provided with no capital expenditure required

Key Features

The Technology Behind the Savings

GF EcoMate pairs intelligent software with IoT sensors to deliver real-time optimization of heating systems, no matter if it's based on gas, district heating, or heat pumps. Designed for simplicity and speed, it offers the smart, automated control your building needs without the burden of traditional BMS setups.



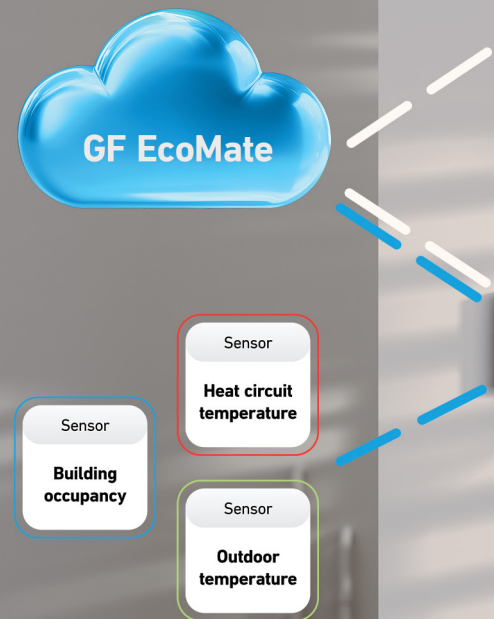
AI-powered Optimization and Cloud-Based Monitoring

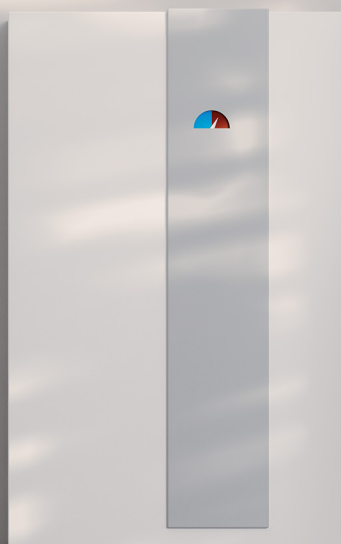
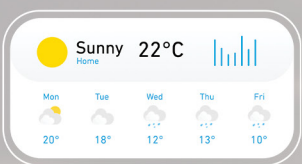
- Adjusts heating using weather and occupancy data
- Real-time access to system data via a secure web interface



Fast Installation and Non-Invasive Hardware

- No invasive work or complex BMS infrastructure needed
- Sensors provided at no cost and easy to set up



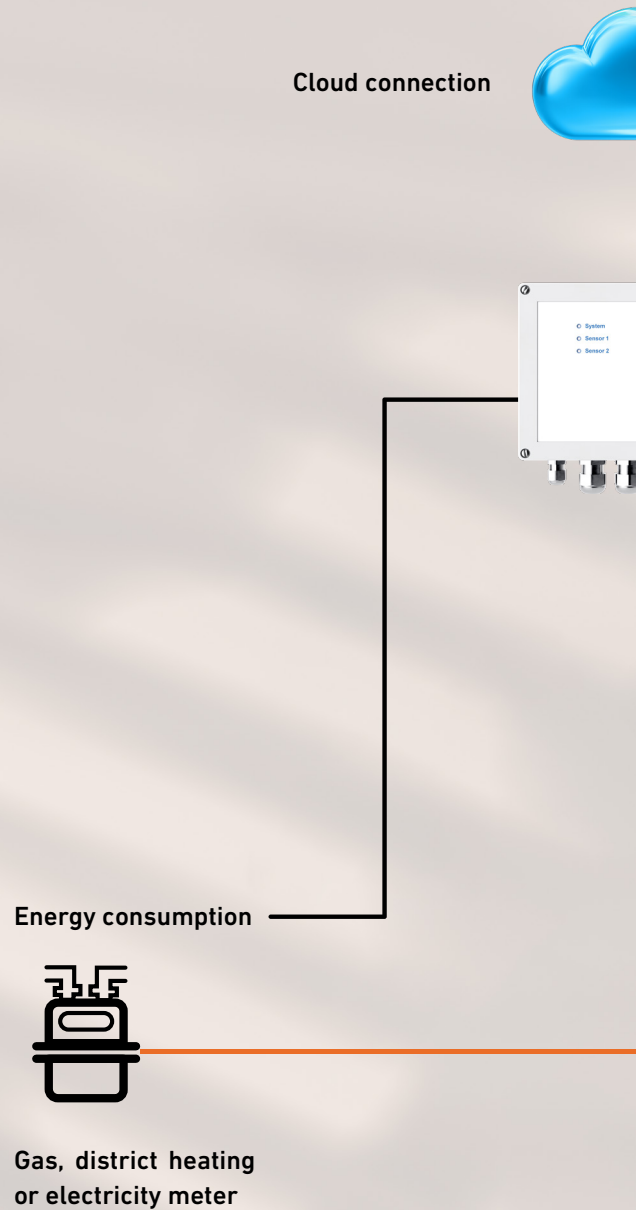


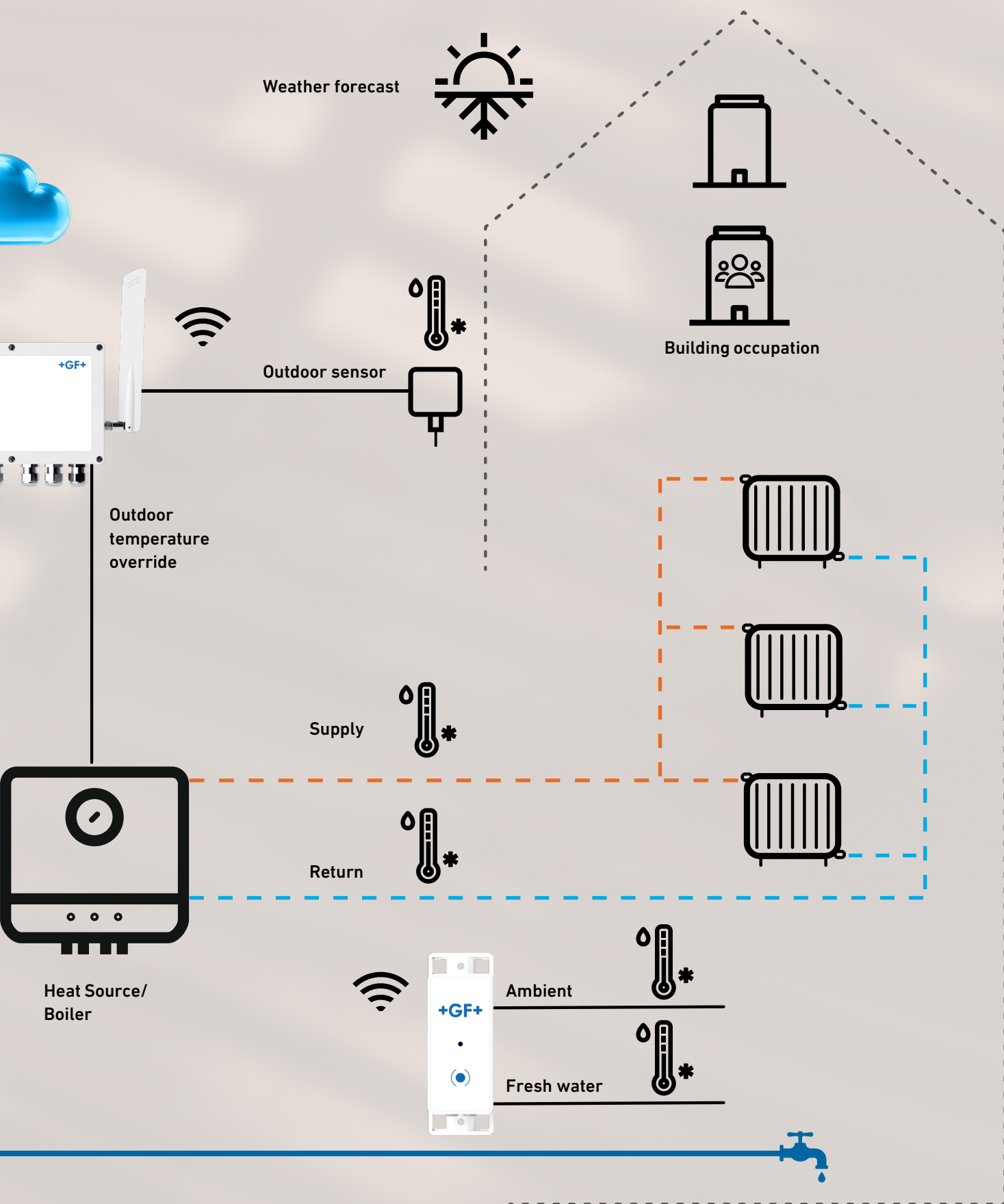
Smart Savings, Simplified

How GF EcoMate works

Everything you need to start saving: sensors, software, and a secure cloud platform is included. With no invasive installation or IT infrastructure required, the system integrates seamlessly into gas, district heating, and heat pump setups alike.

Once installed, GF EcoMate continuously adjusts heating performance based on local weather forecasts and real-time building occupancy, ensuring smart, efficient energy use from day one.





Protecting Value. Avoid stranded assets.

Buildings that don't meet decarbonization targets risk becoming "stranded assets" by losing value, facing financing hurdles, and falling out of regulatory alignment. That's where GF EcoMate supports you.

By optimizing heating emissions and aligning energy performance with **CRREM** (Carbon Risk Real Estate Monitor) pathways, GF EcoMate helps future-proof your real estate portfolio. If the goal is to reduce CO₂, secure refinancing, or protect long-term asset value, GF EcoMate is a powerful tool for maintaining compliance and marketability.

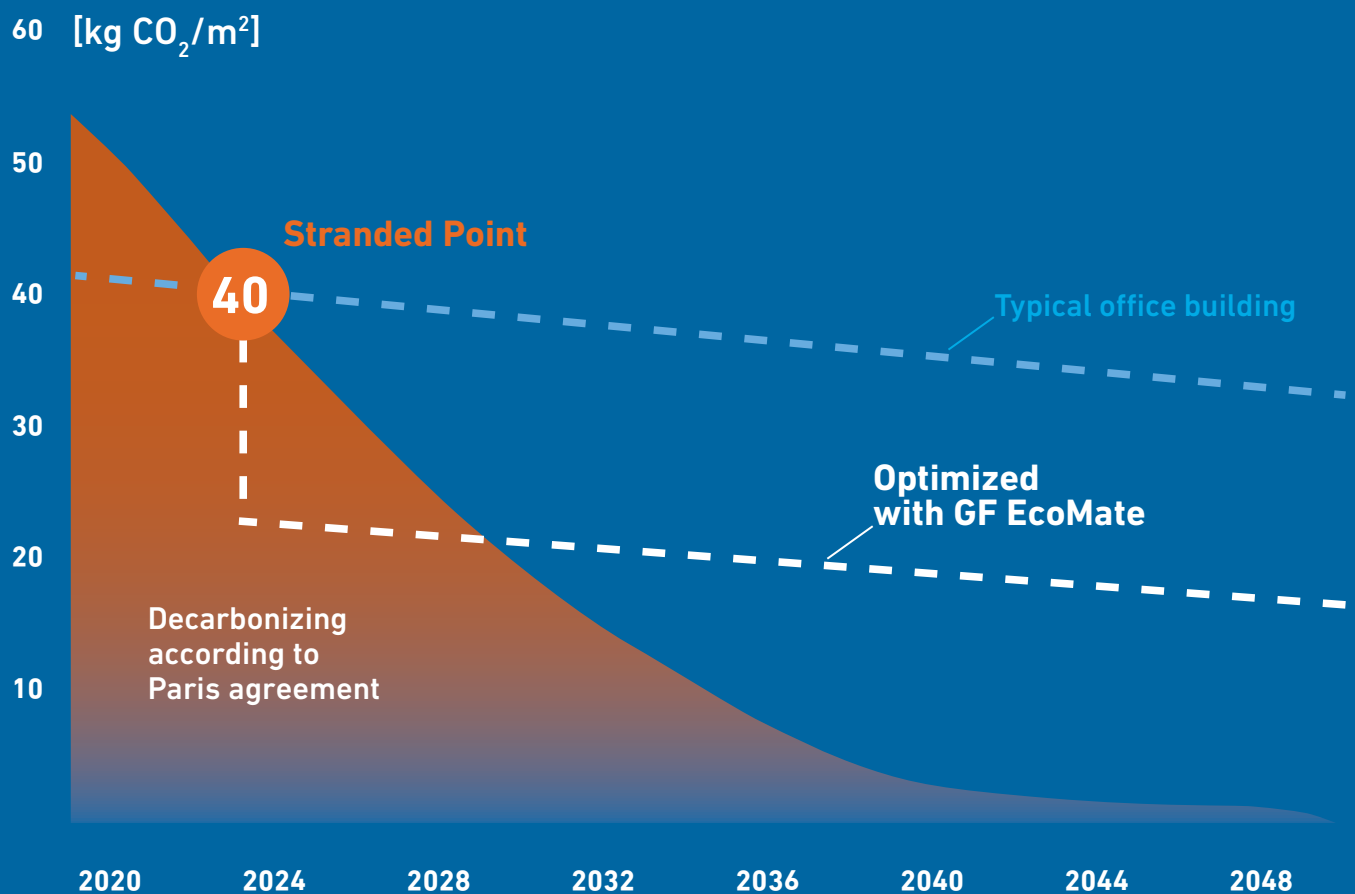


CRREM at a Glance:

- Aligns real estate assets with the Paris Agreement
- Defines emissions limits (kg CO₂/m²) per building type and country
- Helps investors avoid stranded assets
- Supports ESG reporting, refinancing, and valuation

Value Protection and Mitigation of Financial Risks

CO₂ Emissions office building (Germany) according to CRREM





Contract Model

A Partnership Built On Shared Success

GF EcoMate is more than just a product: it's a performance-based partnership. With no upfront investment and a fair, transparent contracting model, customers benefit immediately from energy savings, while GF ensures reliable service and long-term support.

Costs are covered through a 50/50 savings split model, meaning you only pay based on verified results. Installation

is quick and non-invasive, professionally handled by our service team and offset against future savings. After the initial 3-year term, contracts renew annually, ensuring flexibility without risk.

This win-win setup aligns perfectly with modern investment goals, thus supporting your decarbonization targets while preserving capital and simplifying decision-making.



Investment

€0 upfront cost



Savings Split

50% customer / 50% GF



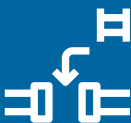
Contract Duration

3 years minimum, auto-renewed yearly



Contract Cancellation

After the initial 3 years, one month before end of the heating period



Installation Offset

One-time cost (~€2,450), deducted from savings



Billing Model

Quarterly pre-payments, annual adjustment

Clear Insights. Verified Savings.

With GF EcoMate, you gain full visibility into your building's energy performance. The intuitive online dashboard delivers real-time data on system status, energy consumption, and achieved CO₂ reductions right when you need it.

One of the most powerful features is **auto-baselining**: it continuously compares optimized days with non-optimized ref-

erence days to calculate actual savings. This dynamic approach reflects real-world building conditions, instead of outdated models or static assumptions.

By integrating monitoring, reporting, and baselining into one interface, GF EcoMate provides a transparent foundation for ESG reporting, financial planning, and operational control.



Auto-Baselining in Action:

- Tracks savings and performance daily
- Continuous baseline calculation in real time
- No inaccurate assumptions based on historical data
- Adapts automatically to energy improvements of the building



Insights at your fingertips:

- Real-time energy usage & savings
- CO₂ emissions tracking
- System health overview & alarms
- Transparent, continuous auto-baselining
- Exportable data & reports
- Supports ESG reporting with traceable data



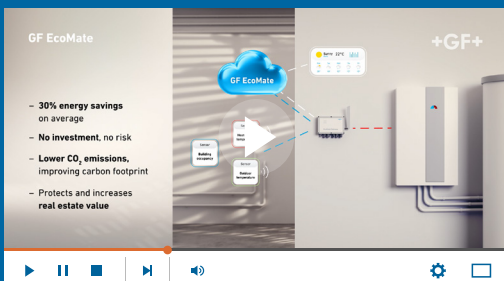
Beyond Optimization: Explore More

Start Your Savings Journey Today

Getting started is simple. With zero upfront investment and a service model based on shared savings, GF EcoMate is the easiest way to boost energy performance while staying in full control of your building's future.

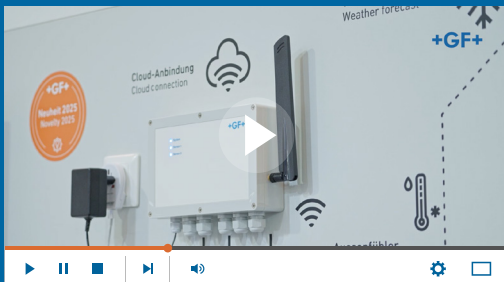


Watch on YouTube
@UponorEurope



Product Video

Discover how GF EcoMate transforms heat source management with smart sensors, intelligent software, and a zero-risk business model designed for modern buildings.



Technical Details Video

Go behind the scenes with one of our product experts and learn how data, automation, and real-world insights power the performance of GF EcoMate.



You've now seen how **GF EcoMate** makes smart heat source management easy, efficient, and risk-free by offering up to 30% energy savings with no upfront investment. But that's just the beginning.

Visit our website to explore detailed information and everything you need to unlock the full potential of GF EcoMate and our broader energy-efficiency portfolio.



Discover more at
uponor.com/ecomate

Excellence in Flow

Visit our webpage to get in contact with your local specialist:

www.uponor.com/en-en/services/contacts

