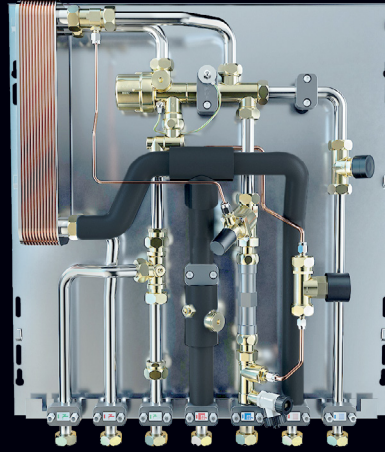


Uponor Combi Port M-Pro

Uponor

Flat unit offering versatile options

The slim design with specially developed accessories enables a wide range of applications.



Installation/system recommendation

- For heating systems with higher flow temperatures, from 55 °C

Application

- Decentralised, instantaneous domestic hot water generation
- Underfloor heating systems
- Radiator heating systems

Installation options

- In wall with cabinets, with and without manifolds
- On wall with cabinets, with and without manifolds
- On wall without cabinets

Certificates

- DVGW approval

Specifications

- Port fully assembled and pressure tested
- Technical limits of use in water for heating and plumbing are shown on technical data sheets
- Pipe clamps made of plastic for sound protection and thermal decoupling
- DVGW-certified PM valve with patented triple-sealing technology
- Thermal insulation at the supply pipes
- Thermostatic bypass valve
- Cold water outlet
- Spacer for heat meter, 110 mm × ¾"
- Spacer for water meter, 110 mm × ¾"
- Venting and drainage valve
- Strainer for cold water, 0.5 mm
- Strainer for primary heating supply line, 0.5 mm
- Connection port (marked) for an electrical earthing lug
- Max. operating pressure, heating: PN10
- Max. operating pressure, sanitary: PN10
- Max. operating temperature: 85 °C
- Max. differential pressure, primary heating: 2.5 bar
- Min. pressure, sanitary: 2.0 bar
- Fitting material, sanitary: CW617N
- Fitting material, heating: CW617N, CW614N
- Pipe material: Stainless steel, 1.4401
- Measurements: W/H/D 556 × 618 × 110 mm

Combi Port M-Pro

For domestic hot water and direct heating systems like radiator and underfloor heating in a slim design and with a mechanical control.

Accessories codes

- 15, 19** Domestic hot water capacity indication (l/min.)
- CB** Copper-brazed stainless steel heat exchanger for domestic hot water preparation
- St** Stainless steel heat exchanger brazed without non-ferrous metal for domestic hot water preparation
- BP** Supply line preheating function
- DI** Primary differential pressure controller at the heat interface unit inlet
- DT** Differential pressure controller at the heat interface unit heat circuit for domestic hot water preparation
- ZM** Circulation module for domestic hot water with safety valve, circulation pump, and differential pressure regulator
- MS** Mixing set with circulation pump, thermostat, and non-return valve for apartment heating circuit
- TL** Thermostatic temperature limiter for domestic hot water, with submersible sensor
- UL** Thermostatic temperature limiter for underfloor heating circuit
- SS** Safety thermostatic switch for apartment heating circuit
- ZA** Zone valve in residential heating circuit return line, with two-point actuator included
- 2C** Second direct heating circuit connection, with extra zone valve (no actuator, no mixing circuit)
- RL** Return temperature limiter for apartment heating circuit
- ZV** Zone valve in residential heating circuit return line, without actuator

UFH version for domestic hot water and direct heating with underfloor heating connection (including mixing circuit with heating pump)

Item no.	Accessories codes									
1093785	15	CB	BP	DT	MS	UL	SS	ZA		
1093786	15	CB	BP	DT	MS	UL	SS	ZA	2C	
1093787	15	CB	BP	MS	UL	TL	SS	ZA		
1093788	15	CB	BP	MS	UL	TL	SS	ZA	2C	
1093793	15	St	BP	DT	MS	UL	SS	ZA		
1093794	15	St	BP	DT	MS	UL	SS	ZA	2C	
1128852	15	St	BP	DT	ZM	MS	UL	SS	ZA	2C
1093789	19	CB	BP	DT	MS	UL	SS	ZA		
1093790	19	CB	BP	DT	MS	UL	SS	ZA	2C	
1093791	19	CB	BP	MS	UL	TL	SS	ZA		
1093792	19	CB	BP	MS	UL	TL	SS	ZA	2C	
1093797	19	St	BP	DT	MS	UL	SS	ZA		
1093798	19	St	BP	DT	MS	UL	SS	ZA	2C	
1128853	19	St	BP	DT	ZM	MS	UL	SS	ZA	2C

RC version for domestic hot water and direct heating with radiator connection (no mixing circuit)

Item no.	Accessories codes					
1093769	15	CB	BP	DT	ZV	
1093770	15	CB	BP	DT	TL	
1093771	15	CB	BP	DT	RL	ZV
1093772	15	CB	BP	DT	TL	RL
1093777	15	St	BP	DT	ZV	
1128854	15	St	BP	DI	ZM	ZV
1093773	19	CB	BP	DT	ZV	
1093774	19	CB	BP	DT	TL	
1093775	19	CB	BP	DT	RL	ZV
1093776	19	CB	BP	DT	TL	RL
1093781	19	St	BP	DT	ZV	
1093782	19	St	BP	DT	TL	
1128855	19	St	BP	DI	ZM	ZV

Further information on Uponor Combi Port M-Pro



➤ Technical information

uponor

Uponor Corporation

Illmalantori 4
00240 Helsinki
Finland
www.uponor.com
1146099 - 08/2024 - EN

Moving ➤ Water