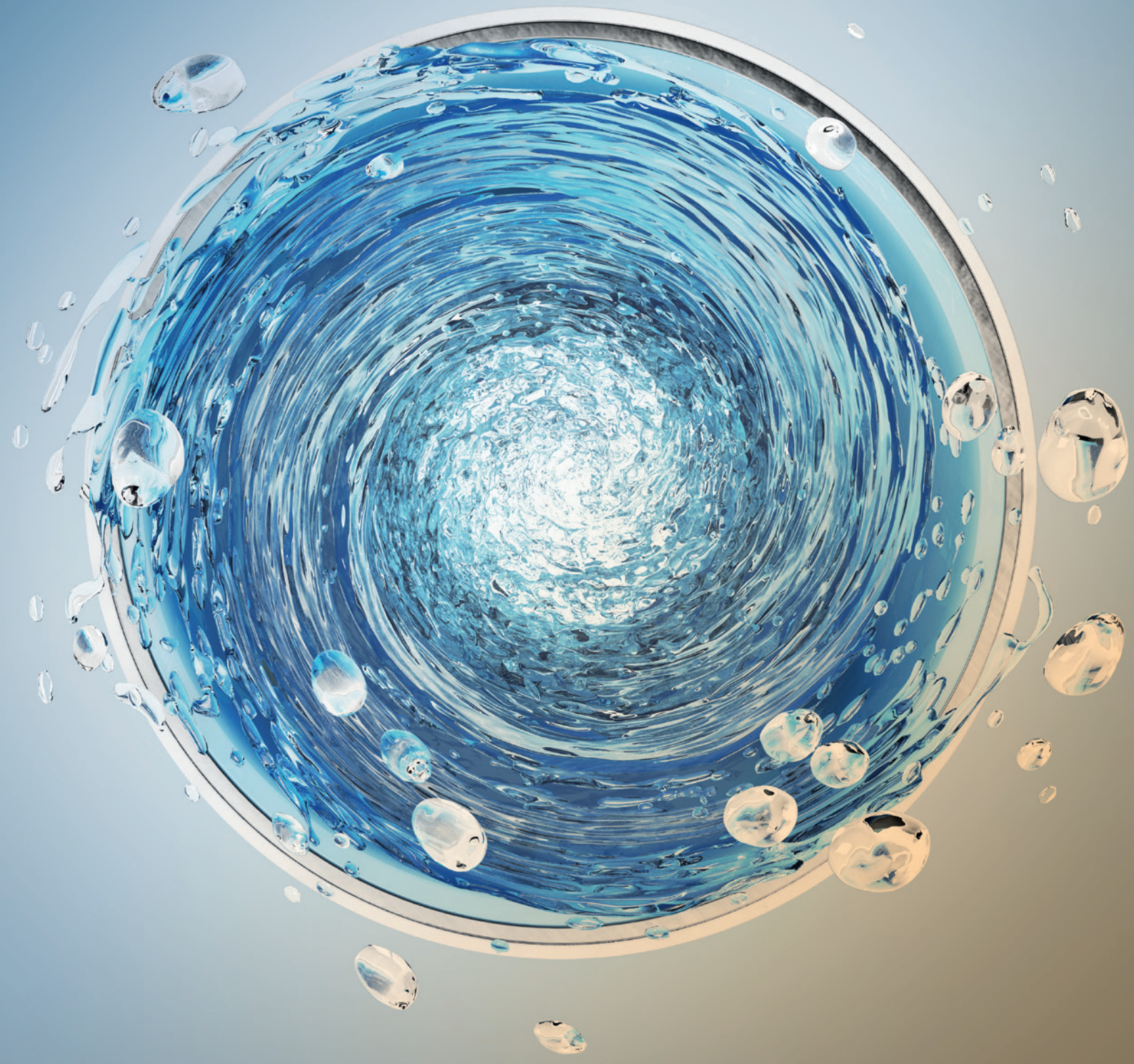


uponor

# Uponor hygiene logic

Drinking water hygiene:  
plan, install, monitor







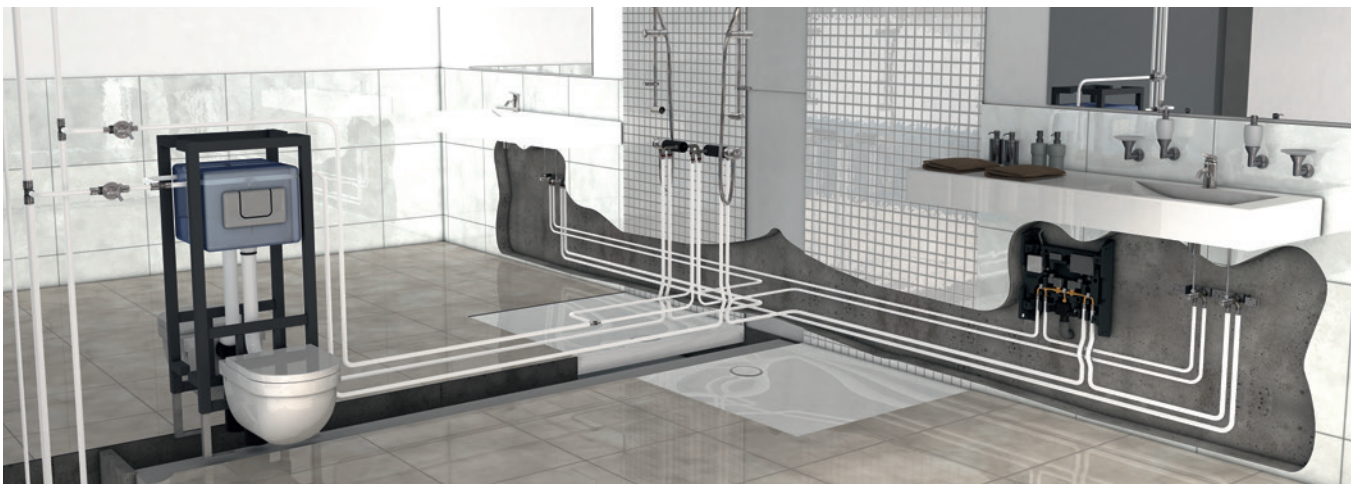
# The new logic for drinking water hygiene: the full system solution from Uponor

Drinking water is the most important element of life. Ensuring it remains hygienically pristine, from the mains line connection to the outlet, is the responsibility of building management. As a planner and plumber for a building, your expert opinion is particularly sought after when it comes to the selection of the right materials, the right method of installation and the permanent monitoring of the drinking water's hygiene.

Nursing homes, clinics, schools and gymnasiums, as commercial or public buildings where consumers have direct access to drinking water, are particularly subject to strict monitoring.

## Discover the best hygiene solutions from Uponor.

As one of the leading providers of innovative and reliable drinking water systems, we offer preventive measures against bacterial multiplication within the drinking water installation – from the riser line connection to the outlet. Our systems will convince you with their safety, reliability and easy installation.



*Install easily: with innovative systems*



*Plan hygienically: with professional service support*



*Monitor confidently: with Uponor Smatrix Aqua PLUS*





# Plan hygienically: prevention is easily comprehensible

A long-lasting drinking water installation which is compliant with the relevant regulations requires foresight in planning as well as the technical skills. Two of the most important criteria are the continual flow of water and a safe water temperature. Long period use interval, happened for example due to irregular utilisations within the building, can lead to water stagnation in the pipes. The danger: drinking water becomes contaminated through the growth of biofilms and propagation of legionella. By not acting, you are taking unnecessary risks. Especially in public facilities such as hospitals, schools or gymnasiums.

As the planner, plumber or manager responsible, you will receive competent support from Uponor – from the planning phase through operation to monitoring. We offer a comprehensive product portfolio for drinking water installations and hygiene solutions which meet the highest requirements for quality, safety and reliability.

**Our service support** includes, among others, planning service and software, a handbook, training at the Uponor Academy and certification according to VDI/DVGW 6023 categories A and B for the hygienically-conscious planning, execution, operation and maintenance of drinking water systems.

## Important facts about water hygiene

- Up to **32.000 people** fall ill every year in Germany with pneumonia due to legionella\*
- Up to **15 %** of the cases result in death\*\*
- Plus the number of Pontiac fever illnesses that are **10 to 100 times** higher
- A water temperature of **25 °C to 50 °C** results in increased legionella growth
- Up to **€400,000** in damages have already been claimed in a single case\*\*\*

\*German Federal Environment Agency (October 2011)

\*\*Focus Online (May 2015)

\*\*\*BBC News (September 2013)



## The Uponor solution for reliable hygiene in

- Multi-storey buildings
- Holiday rentals
- Hotels
- Office buildings
- Hospitals
- Old folks and nursing homes
- Schools and sports facilities
- Industrial buildings (shower facilities)



# Install easily: with minimum effort and maximum safety

By selecting the most suitable type of installation, you as a planner and plumber can inhibit the risk of drinking water contamination due to insufficient temperature regulation and stagnation in the piping systems – from the very beginning. With Uponor, you can create the best possible conditions for long-lasting drinking water hygiene.

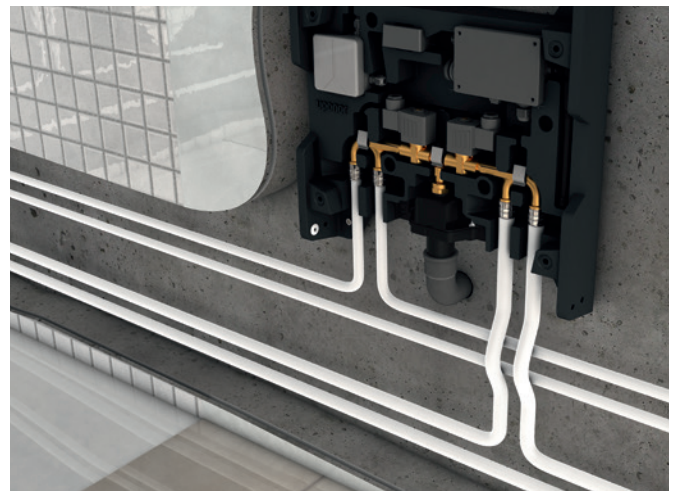
**Loop installation** is particularly recommended in this case. It provides you with not only a more compact and consistent drinking water system with lower pressure loss and optimal comfort, but also a mechanism that enables constant water flow in a loop unit whenever a withdrawal on the loop is being used. Our reliable installation systems are ideal for this method of installation and guarantee a high standard of hygiene and efficiency.

## Your Uponor hygiene logic

- Certified hygienic installation systems
- The full system portfolio allows for a modern loop installation
- Uponor products are delivered in hygienically sealed packaging
- Our quality is frequently tested by independent institutes

## Uni Pipe PLUS: the pipe for hygienic drinking water

Unique worldwide, the multi-layer composite-piping system from Uponor is ideal for drinking water installations. The pipe is produced under the strictest hygienic conditions and is hygienically sealed off. Thanks to its flexibility and stability, Uni Pipe PLUS is perfectly suitable for loop installations.



## We meet all hygiene standards

- EN ISO 21003
- DVGW
- ÖVGW
- EN 806 (DIN 1988, ÖNORM B 5019)
- VDI/DVGW 6023



# Monitor confidently: with Uponor Smatrix Aqua PLUS

“Drinking water has to be supplied such that the pleasure and use thereof at the point of withdrawal does not cause harm to human health, particularly through pathogens”, as the German Drinking Water Ordinance states. Did you know that the manager of a drinking water installation is also responsible for compliance with this ordinance?

**Uponor Smatrix Aqua PLUS** – as part of the Uponor hygiene logic – is the easiest way to fulfil your responsibility over the long term. Smatrix Aqua PLUS is an automatic hygienic flushing system which permanently monitors and regulates the entire drinking water installation in a building, and even older buildings can be retrofitted with it. Time and costs spent – from the planning to operation – are kept low.

As a building manager, you particularly profit from the protocol function: data on the flushing process are recorded non-stop and logged, and they can be accessed at any time via the Smatrix Aqua PLUS Portal.

## How Smatrix Aqua PLUS works:

The flushing stations safeguard the sanitary facilities. The temperature sensors monitor the uptake, the drinking water heater and the circulation system. The data hub is installed at a central location in the building and permanently receives data from the flushing stations and temperature sensors. As needed, targeted flushing is then prompted. Via the Smatrix Aqua PLUS Portal, the desired values can be configured and the current values can be displayed and documented. This ensures permanent and centralised monitoring of the entire drinking water installation.

## Your benefits at a glance:

- Assured compliance with hygiene regulations and legal standards
- Seamless monitoring and documentation of the entire drinking water installation – also for several buildings
- Immediate notification of abnormalities via e-mail
- No additional software or expensive integration into the building Automation System
- Enables a fast and easy installation needed, and ensures the operation as intended right from the shell construction phase





**Uponor Corporation**  
Äyritie 20  
01510 Vantaa  
Finland

**T** +358 (0)20 129 211  
**F** +358 (0)20 129 2841

1087401\_05/2016



[www.uponor.com/hygiene](http://www.uponor.com/hygiene)