



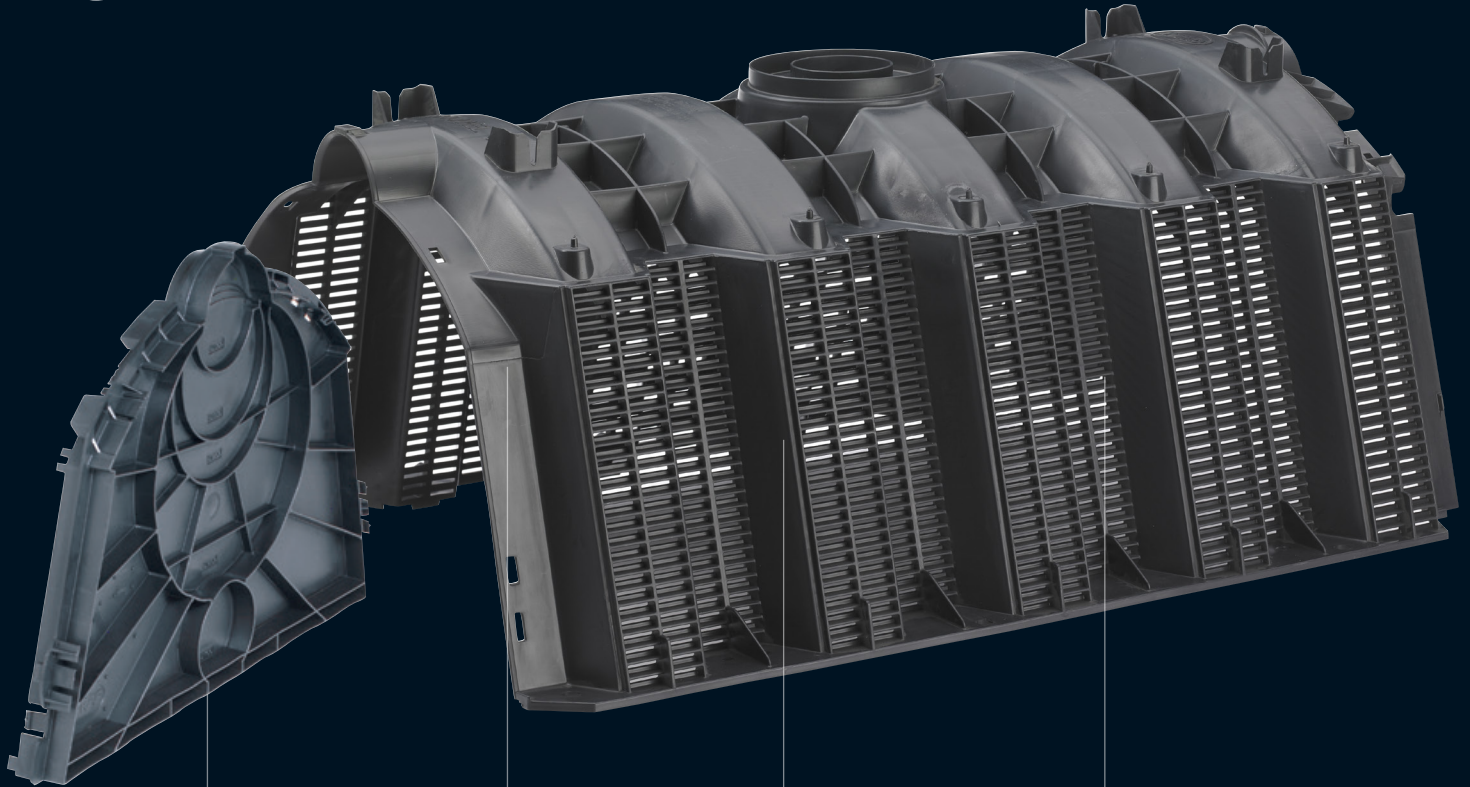
**Stormwater tunnel
300I**

uponor

Technical datasheet



Stormwater tunnel 300l



Flexible modular structure

Possible to build the fascine with double tunnel modules, whereby the available collection volume is doubled to 600 litres.

Space saving

Fleksible replacement for stone fascines.

Effective drainage

Drains 45m² of roof area per tunnel with normal sandy soil

Effective packing

There can be 40 tunnel modules on one euro pallet.

Uponor storwater tunnel

The unique modular construction of stormwater tunnels means that there can be up to 40 tunnel modules on one euro pallet, which results in a significant saving in both storage and transport costs.

The low weight also means an easy installation without the use of heavy equipment, just as the modular construction ensures a space-saving installation close to the ground – even in lightly trafficked areas.

Application	Infiltration of rainwater
Material	Polypropylene (PP)
Colour	Grey
Dimensions	1160 x 800 x 510mm
Weight	11kg
Volume	300l, net volume: 285l
Inlet	110, 160, 200 and 315mm

Uponor's range stormwater solutions includes this stormwater tunnel which can be used both as a single and double module for local drainage of rainwater.

Each tunnel has an effective collection volume of 300 liters and a drainage capacity for roof areas up to 43 m² in soil with sufficient infiltration capacity.

One Europallet contains 40 tunnel modules which results in a significant saving in both storage and transport costs.

Ideal for use in private, public and industrial areas, from roof areas on detached houses to offices as well as roads/parking lots.

Construction

The construction and design of stormwater fascines with tunnels can be done in many individual ways, such as e.g. one long gutter fascia with one tunnel module in width and x number of modules in the desired length.

The fascine can also be built with several parallel tunnel modules and in the desired length. It is also possible to build the fascine with double tunnel modules, whereby the available collection volume is doubled to 600l.



Properties

Material	Polypropylene (PP)
Length	1160mm
Length incl. end plates	1220mm
Width	800mm
Hight	510mm
Weight	11kg
Effective volume	300l
Connection options on the tunnel	1 pcs. ø110/ø200
Connection options on end plate	2 pcs. ø100
	1 pcs. ø160
	1 pcs. ø200
	1 pcs. ø315
Connecting rods for double tunnel	6 pcs.
Traffic load	Stormwater tunnels are intended for non-traffic areas and for areas where there is maximum passenger vehicle traffic. Min. 0.5m ground cover for car traffic loads.

Moving
> Forward

uponor

Uponor Infra A/S

Bødkervej 5
4450 Jyderup
Denmark

T +45 46 40 53 11

W www.uponor.dk/infra

E infra.dk@uponor.com