

**Uponor Flowise:  
Air Release Chamber**  
**Technical Datasheet**

**uponor**



# Uponor Flowise: Air Release Chamber



Air release valves are used in pipelines to release unwanted air and to maintain system performance.

Enables air to be released from the media pipe.

Allows air to enter if the pipe is emptied from water.

Can be designed for on-line or off-line installation.

## Air Release Chamber

Air release valves are used in pipelines to release unwanted air and to maintain system performance.

Air release valves should ideally be placed at strategic high places in pipelines where air pockets can accumulate.

The valve usually also allow air to return into the pipeline if emptying of water is needed.

An air-release chamber can be designed for on-line or off-line installations.

Application	Potable Water System
Material	PE100 (chamber body)
Dimension (ID) chamber body	1000 – 3000 mm
Colour	Black (outside) Light gray (inside)
Standards	EN 13598-2, EN 476
Approvals	Pipe design approved according NPM up to 3000 mm

# Properties and assortment

## System properties

Equipment is based on customer specifications. Available options listed in the *Uponor Flowise Air Release Chamber* type drawings.

With the correct use of air release valves, you can reduce:

- Energy consumption and operating costs.
- Corrosion.
- Pressure loss.
- Filling times of the piping system.
- Risk of pressure stroke.
- Inaccuracies in flow and quality measurement.

Can be designed for on-line or off-line installation.

Can be delivered as ready to install.

## Air Release Chamber

Uponor no 1140531-1 (off-line), 1140531-2 (on-line)

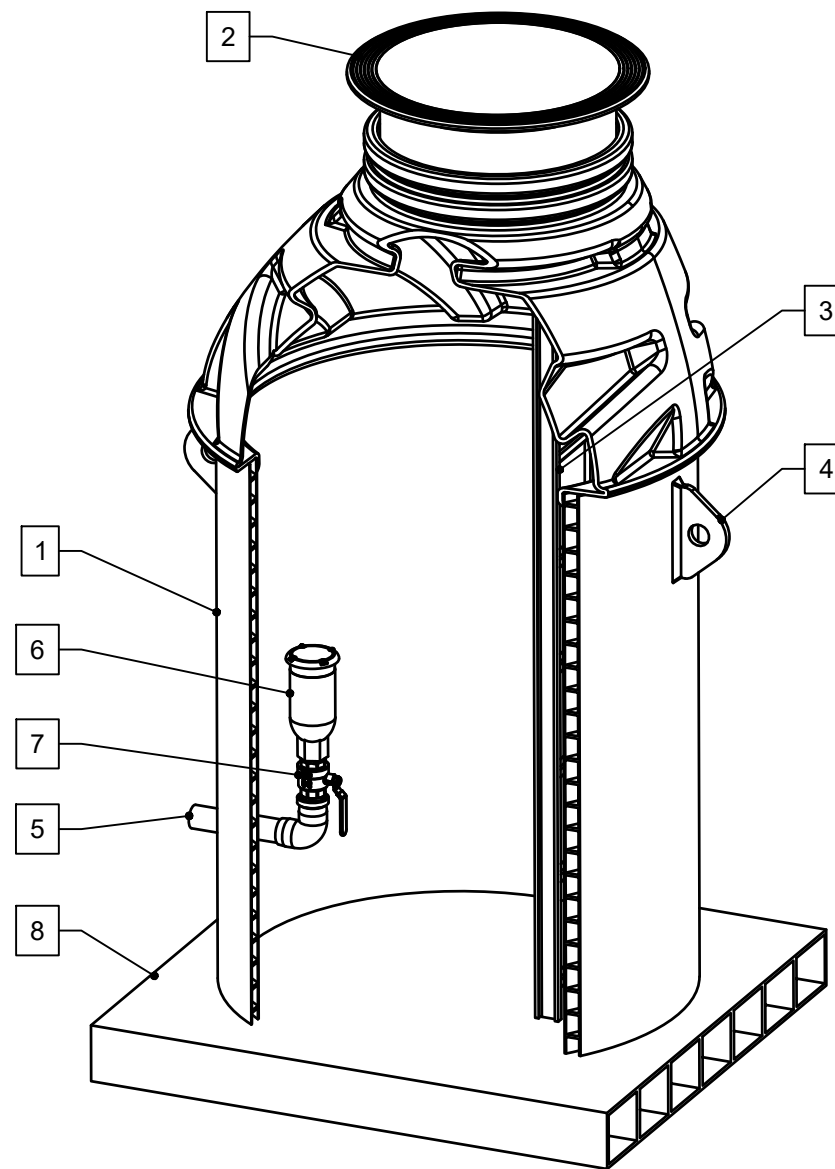
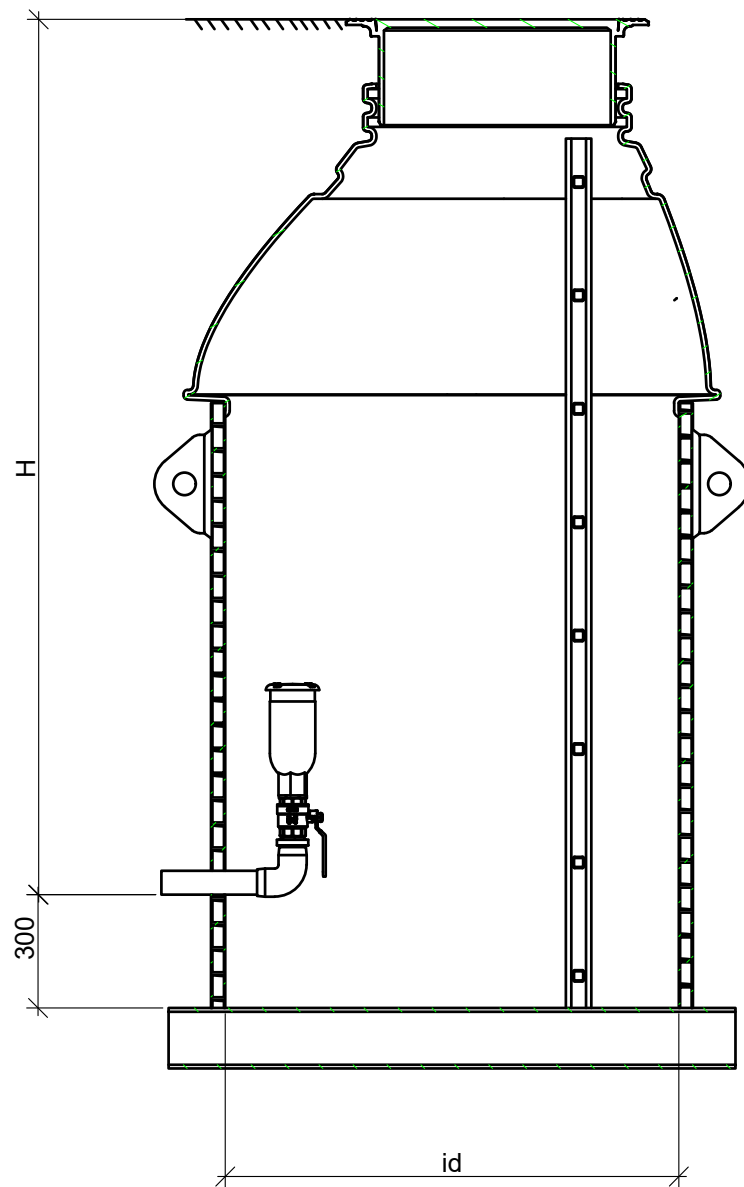


Uponor Flowise Air Release Chamber 1140531-1 (off-line)



Uponor Flowise Air Release Chamber 1140531-2 (on-line)

## Uponor Flowise Air release chamber, off-line



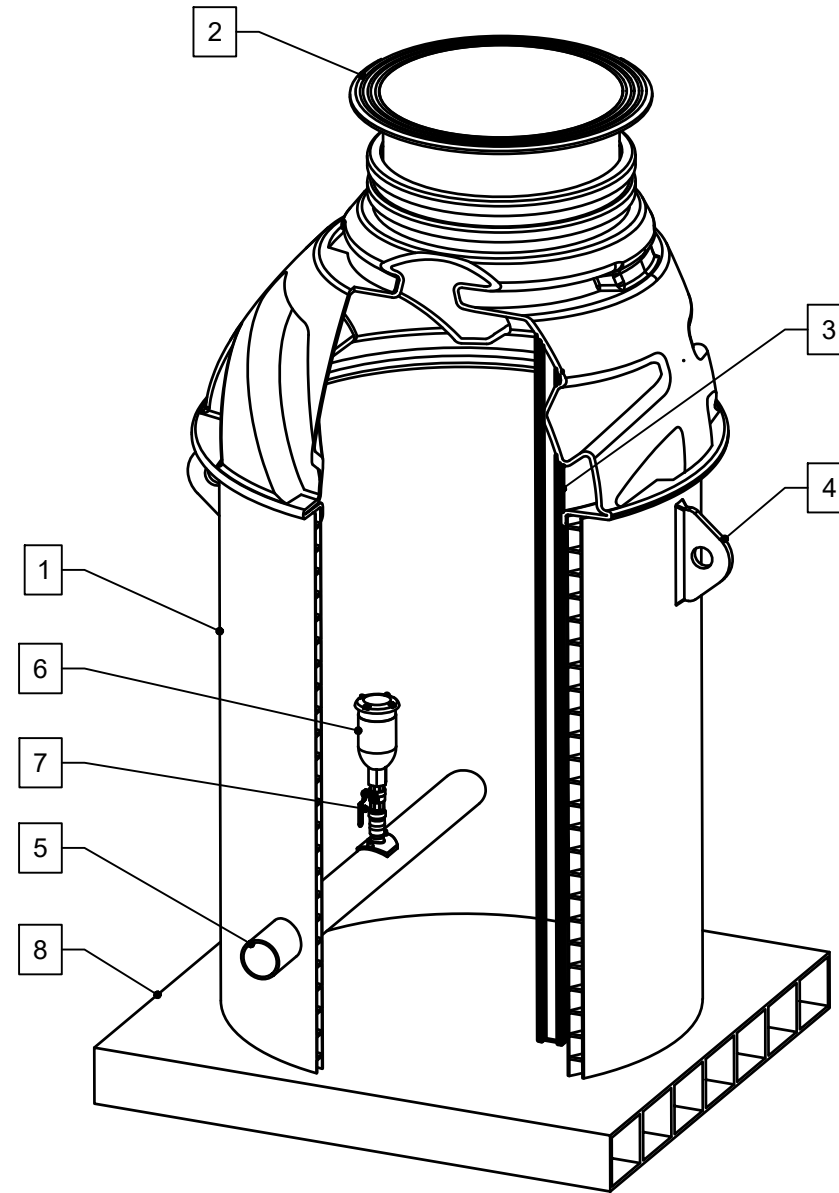
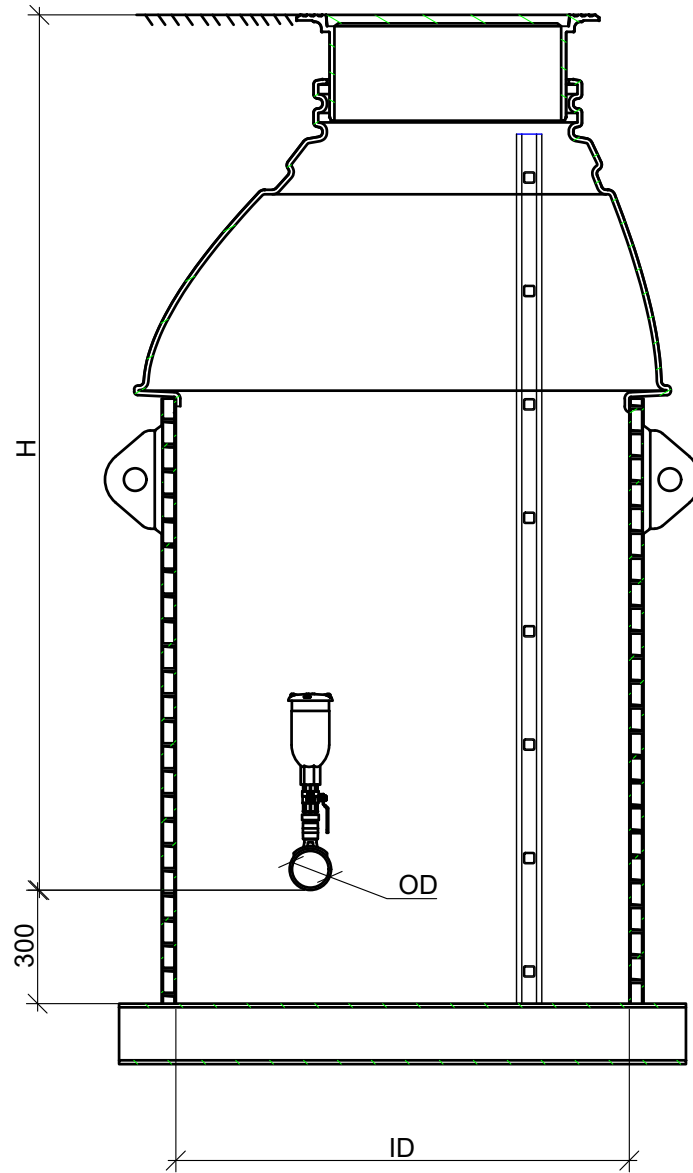
Air release chamber			
Pos.	Description	Model/Size	Qty.
1	Chamber body PE100	Acc. selection	1
2	Chamber top	Acc. selection	1
3	Ladder	Acc. selection	0-1
4	Lifting yoke		2-4
5	Pressure pipe	Acc. selection	1
6	Air release valve	Acc. selection	1
7	Ball valve/Gate valve	Acc. selection	1-2
8	Bottom, self anchoring		1

Selections	
Feature	Selection
Chamber body diameter id	<input type="checkbox"/> 1000 <input type="checkbox"/> 1200 <input type="checkbox"/> 1250 <input type="checkbox"/> 1400 <input type="checkbox"/> 1600 <input type="checkbox"/> 2000 <input type="checkbox"/> 2400 <input type="checkbox"/> 3000 <input type="checkbox"/> Other: _____
Top solution	<input type="checkbox"/> A <input type="checkbox"/> B <input type="checkbox"/> D <input type="checkbox"/> E
Ladder*	<input type="checkbox"/> YES <input type="checkbox"/> NO
Groundwater level above invert	<input type="checkbox"/> YES <input type="checkbox"/> NO _____ m
Handrail*	<input type="checkbox"/> YES <input type="checkbox"/> NO
Pressure pipe invert from ground level	H= _____ mm
Pressure pipe diameter	D= _____ mm
Air release valve type	<input type="checkbox"/> Wastewater <input type="checkbox"/> Potable water
Valve function	<input type="checkbox"/> 1 way <input type="checkbox"/> 2 way <input type="checkbox"/> 3 way
Valve size	<input type="checkbox"/> 1" <input type="checkbox"/> 2" <input type="checkbox"/> DN50 <input type="checkbox"/> DN80 <input type="checkbox"/> DN100
Pressure gauge*	<input type="checkbox"/> YES <input type="checkbox"/> NO
Spool valve + connection*	<input type="checkbox"/> YES <input type="checkbox"/> NO

<input type="checkbox"/> Ø 860/800 <input type="checkbox"/> Safety grit	<b>A</b>	<input type="checkbox"/> 600X600 aluminium <input type="checkbox"/> 800X800 aluminium	<b>B</b>
<input type="checkbox"/> Ø600 cast iron 40tn <input type="checkbox"/> Ø630 cast iron 40tn <input type="checkbox"/> Without cast iron cover	<b>D</b>	<input type="checkbox"/> Ø630 cast iron 40tn 0,75m <input type="checkbox"/> Ø800 cast iron 40tn 0,75m	<b>E</b>

	CASE NUMBER	DRAWN BY	HANDLED BY
	DATE	CONTACT PERSON	
WWW.UPONOR.COM	CONTENT		
	Air release chamber, off-line		
SCALE	NUMBER		
1:20 (A3)	1140531-1		

## Uponor Flowise Air release chamber, on-line



Air release chamber 1000+			
Pos.	Description	Model/Size	Qty.
1	Chamber body PE100	Acc. selection	1
2	Chamber top	Acc. selection	1
3	Ladder	Acc. selection	0-1
4	Lifting yoke		2-4
5	Pressure pipe	Acc. selection	1
6	Air release valve	Acc. selection	1
7	Ball valve/Gate valve	Acc. selection	1-2
8	Bottom, self anchoring		1

Selections	
Feature	Selection
Chamber body diameter	<input type="checkbox"/> 1000 <input type="checkbox"/> 1200 <input type="checkbox"/> 1250 <input type="checkbox"/> 1400 <input type="checkbox"/> 1600 <input type="checkbox"/> 2000 <input type="checkbox"/> 2400 <input type="checkbox"/> 3000 <input type="checkbox"/> Other: _____
Top solution	<input type="checkbox"/> A <input type="checkbox"/> B <input type="checkbox"/> C <input type="checkbox"/> D
Ladder*	<input type="checkbox"/> YES <input type="checkbox"/> NO
Groundwater level above invert	<input type="checkbox"/> YES <input type="checkbox"/> NO _____ m
Handrail*	<input type="checkbox"/> YES <input type="checkbox"/> NO
Pressure pipe depth from ground level	H= _____ mm
Pressure pipe diameter	D= _____ mm
Air release valve type	<input type="checkbox"/> Wastewater <input type="checkbox"/> Potable water
Valve function	<input type="checkbox"/> 1 way <input type="checkbox"/> 2 way <input type="checkbox"/> 3 way
Valve size	<input type="checkbox"/> 1" <input type="checkbox"/> 2" <input type="checkbox"/> DN50 <input type="checkbox"/> DN80 <input type="checkbox"/> DN100
Pressure gauge*	<input type="checkbox"/> YES <input type="checkbox"/> NO
Spool valve + connection	<input type="checkbox"/> YES <input type="checkbox"/> NO

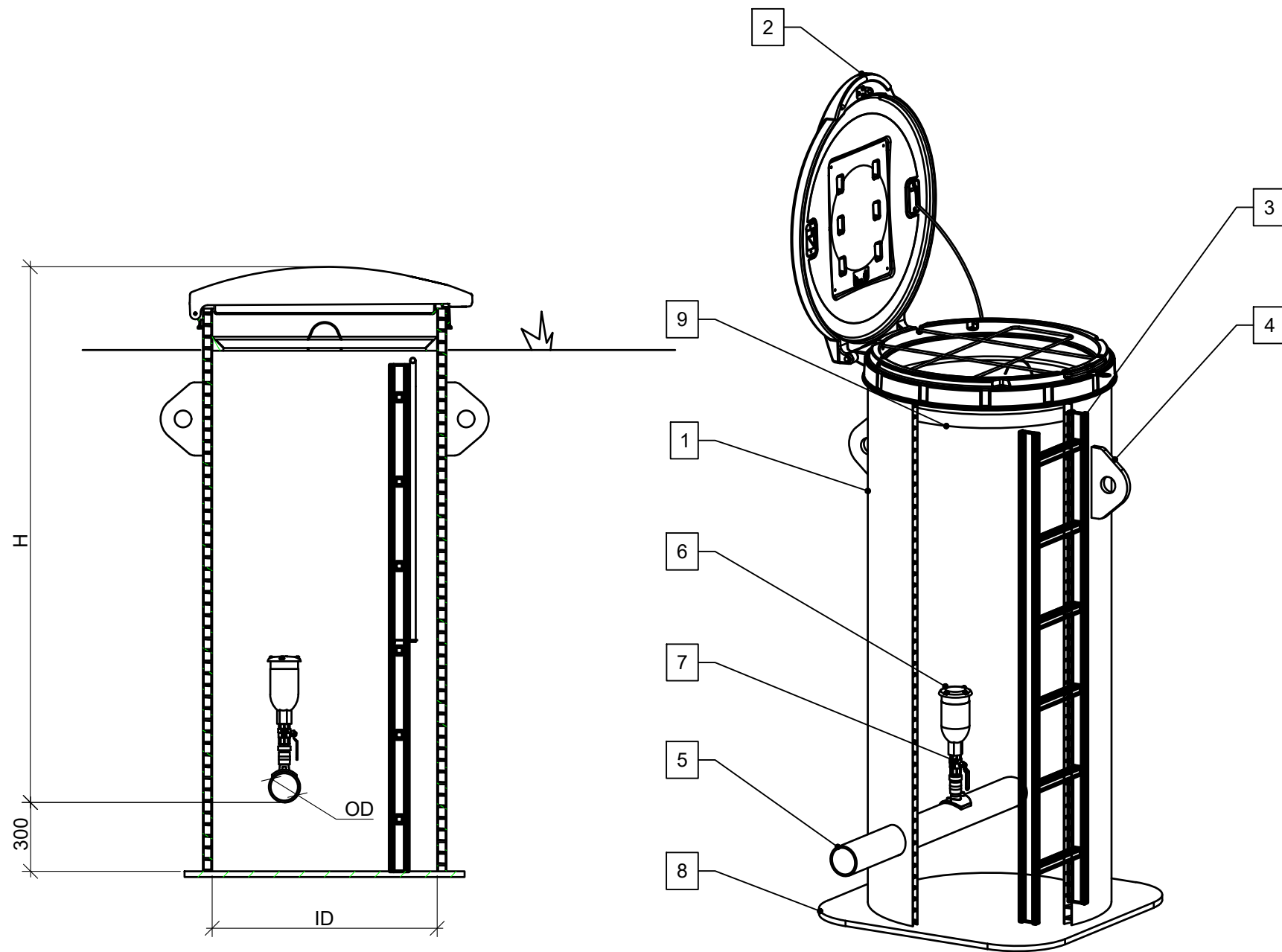
<input type="checkbox"/> Ø 860/800 <input type="checkbox"/> Safety gridd	<b>A</b>	<input type="checkbox"/> 600X600 aluminium <input type="checkbox"/> 800X800 aluminium	<b>B</b>
<input type="checkbox"/> Ø600 cast iron 40tn <input type="checkbox"/> Ø630 cast iron 40tn <input type="checkbox"/> Without cast iron cover	<b>D</b>	<input type="checkbox"/> Ø630 cast iron 40tn 0,75m <input type="checkbox"/> Ø800 cast iron 40tn 0,75m	<b>E</b>

uponor

WWW.UPONOR.COM

CASE NUMBER	DRAWN BY	HANDLED BY
DATE	CONTACT PERSON	
09.08.2023	---	
CONTENT		
Air release chamber on-line		
SCALE	NUMBER	
1:20 (A3)	1140531-2	

## Uponor Flowise Air release chamber Ø800, on-line



Air release chamber 800			
Pos.	Description	Model/Size	Qty.
1	Chamber body PE100	ID 800	1
2	Chamber top	Lockable lid 800 with fallprotection	1
3	Ladder	Acc. selection	0-1
4	Lifting yoke		2-4
5	Pressure pipe	Acc. selection	1
6	Air release valve	Acc. selection	1
7	Ball valve/Gate valve	Acc. selection	1-2
8	Bottom, self anchoring		1
9	Insulation lid	( ) YES ( ) NO	1

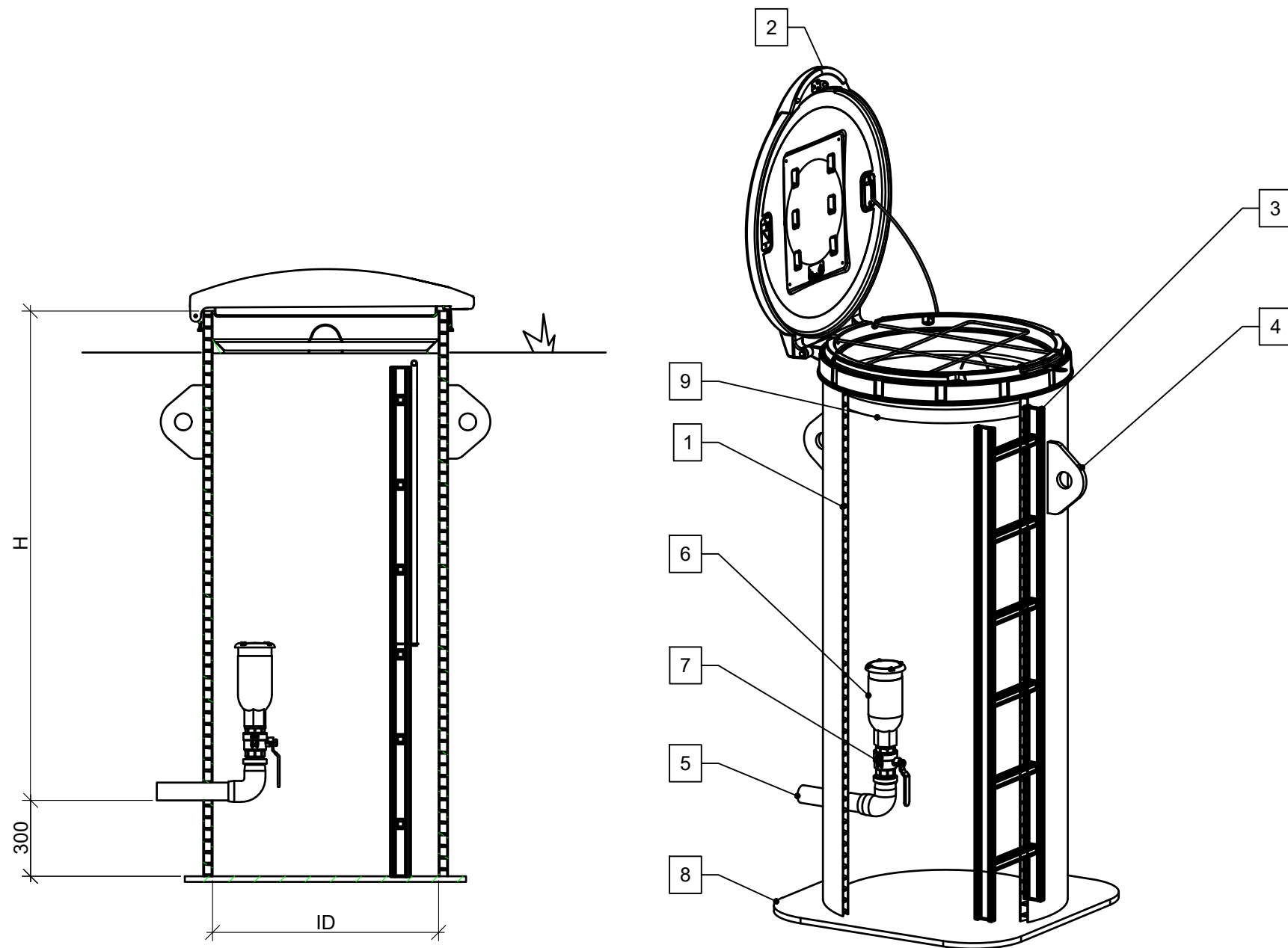
Selections	
Feature	Selection
Ladder*	( ) YES ( ) NO
Groundwater level above invert	( ) YES ( ) NO _____ m
Handrail*	( ) YES ( ) NO
Pressure pipe depth from ground level	H= _____ mm
Pressure pipe diameter	D= _____ mm
Air release valve type	( ) Wastewater ( ) Potable water
Valve function	( ) 1 way ( ) 2 way ( ) 3 way
Valve size	( ) 1" ( ) 2" ( ) DN50 ( ) DN80 ( ) DN100
Pressure gauge*	( ) YES ( ) NO
Spool valve + connection*	( ) YES ( ) NO

uponor

WWW.UPONOR.COM

CASE NUMBER	DRAWN BY	HANDLED BY
	---	---
DATE	CONTACT PERSON	
09.08.2023	---	
CONTENT		
Air release chamber Ø800, on-line		
SCALE	NUMBER	
1:20 (A3)	1140531-3	

## Uponor Flowise Air release chamber Ø800, off-line



Air release chamber 800			
Pos.	Description	Model/Size	Qty.
1	Chamber body PE100	ID 800 H=2600	1
2	Chamber top	Lockable lid 800 with fallprotection. Bolted	1
3	Ladder	Acc. selection	0-1
4	Lifting yoke		2-4
5	Pressure pipe	Acc. selection	1
6	Air release valve	Acc. selection	1
7	Ball valve/Gate valve	Acc. selection	1-2
8	Bottom, self anchoring		1
9	Insulation lid		

Selections	
Feature	Selection
Ladder*	<input type="checkbox"/> YES <input type="checkbox"/> NO
Groundwater level above invert	<input type="checkbox"/> YES <input type="checkbox"/> NO _____ m
Handrail*	<input type="checkbox"/> YES <input type="checkbox"/> NO
Pressure pipe depth from ground level	H= _____ mm
Pressure pipe diameter	D= _____ mm
Air release valve type	<input type="checkbox"/> Wastewater <input type="checkbox"/> Potable water
Valve function	<input type="checkbox"/> 1 way <input type="checkbox"/> 2 way <input type="checkbox"/> 3 way
Valve size	<input type="checkbox"/> 1" <input type="checkbox"/> 2" <input type="checkbox"/> DN50 <input type="checkbox"/> DN80 <input type="checkbox"/> DN100
Pressure gauge*	<input type="checkbox"/> YES <input type="checkbox"/> NO
Spool valve + connection*	<input type="checkbox"/> YES <input type="checkbox"/> NO

uponor

WWW.UPONOR.COM

CASE NUMBER	DRAWN BY	HANDLED BY
	---	---
DATE	CONTACT PERSON	
09.08.2023	---	
CONTENT		
Air release chamber Ø800, off-line		
SCALE	NUMBER	
1:20 (A3)	1140531-4	

# Moving > Water

uponor

**Uponor Corporation**

Ilmalantori 4

00240 Helsinki

Finland

**T** +358 (0)20 129 211

**F** + 358 (0)20 129 2841

[www.uponor.com](http://www.uponor.com)