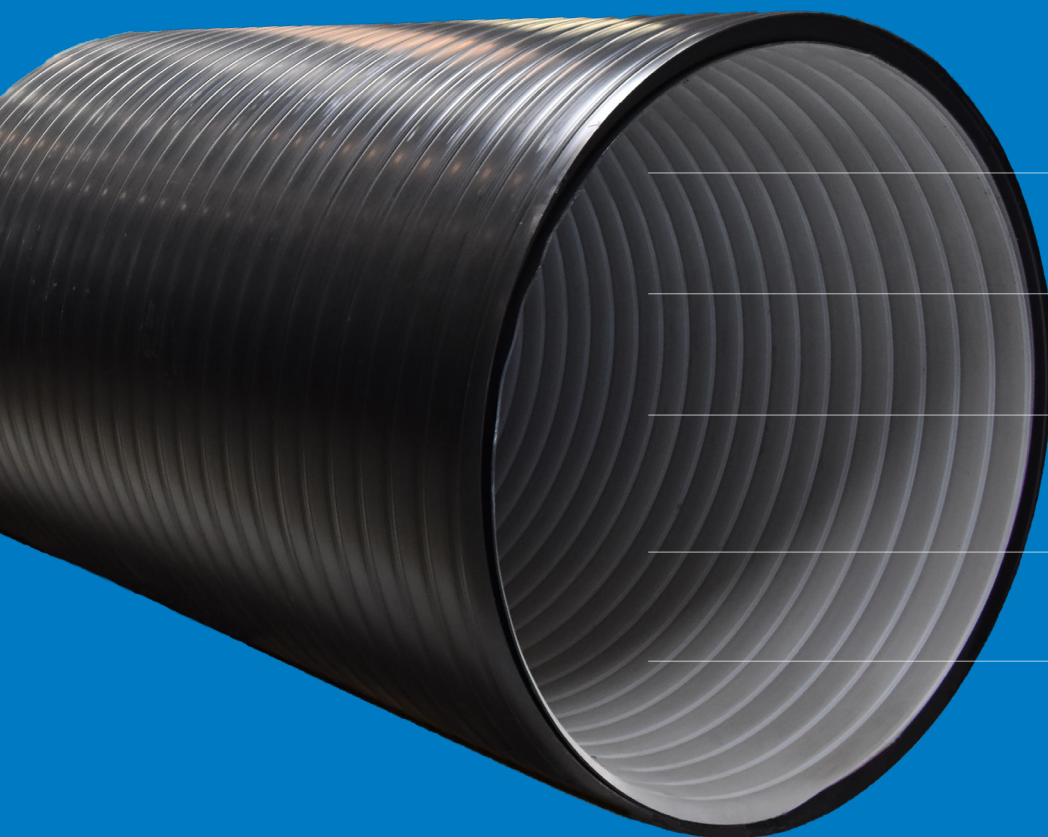


**Uponor lightweight pipes**  
**Weholite**  
**Technical datasheet**

**uponor**



# Leightweight pipes for designed solutions



Expected service of 100 years

Weldable and tensile joints

Complete system for pipes, fittings and tanks

White inside allows easy inspection

Insta Cert and Nordic Poly Mark approval

## Flexible and longlasting lightweight pipes

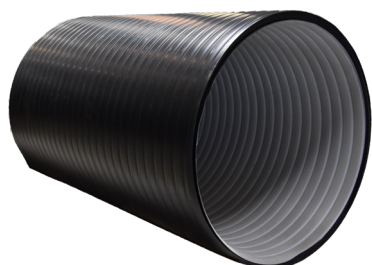
The patented wall structure of the Weholite pipe makes it possible to produce PE pipes up to 3500 mm. Under normal operating conditions, the PE material is chemically resistant. Weholite does not rust or corrode due to chemical or electrical reactions in the soil.

The material's excellent abrasion resistance and flexibility make Weholite a truly multifunctional pipe that can be easily and quickly installed thanks to its lightweight construction.

<b>Application</b>	Transportation of potable, storm and sewage water and chambers, tanks, subversion and ventilation
<b>Material</b>	Polyethylene
<b>Colour</b>	Black or specific colour on request
<b>Dimensions</b>	360-3500mm
<b>Lengths</b>	12.5m
<b>Ring stiffness</b>	SN2, SN4, SN8 and others on request
<b>Standards</b>	EN 13476-2
<b>Approvals</b>	Nordic Poly Mark, Cert. no 4075 Meets requirements in DK-VAND's guidelines

# Assortment

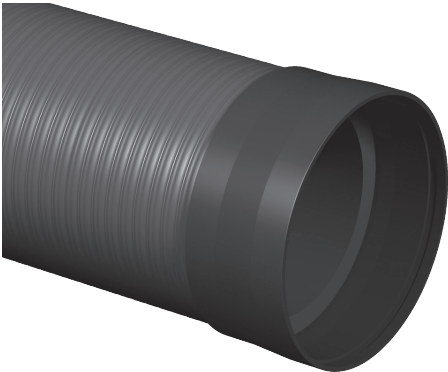
## Weholite pipe with smooth end



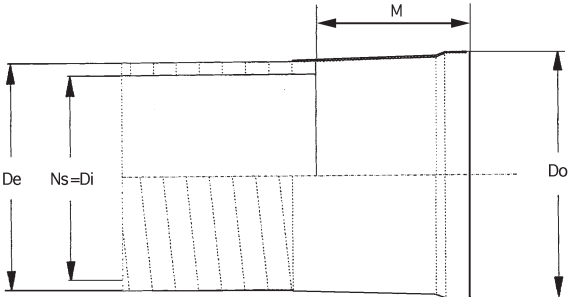
Dimensions mm	Smooth end SN2		Smooth end SN4		Smooth end SN8	
	OD ca. mm	Length m	OD ca. mm	Length m	OD ca. mm	Length m
360	-	-	400	12.5	400	12.5
400	-	-	451	12.5	451	12.5
500	-	-	566	12.5	569	12.5
600	650	12.5	678	12.5	677	12.5
700	756	12.5	794	12.5	790	12.5
800	866	12.5	906	12.5	904	12.5
900	975	12.5	993	12.5	1016	12.5
1000	1084	12.5	1104	12.5	1130	12.5
1200	1299	12.5	1324	12.5	1352	12.5
1250	1355	12.5	1378	12.5	-	-
1400	1514	12.5	1546	12.5	1578	12.5
1500	1623	12.5	1654	12.5	1692	12.5
1600	1732	12.5	1768	12.5	1804	12.5
1800	1948	12.5	1984	12.5	2030	12.5
2000	2168	12.5	2208	12.5	2253	12.5
2200	2380	12.5	2433	12.5	2495	12.5
2400	2598	12.5	2653	12.5	2718	12.5
2500	2704	12.5	2756	12.5	2822	12.5
2600	2813	12.5	2874	12.5	2950	12.5
3000	3253	12.5	3320	12.5	3385	12.5

Other lengths are made on request.

# Weholite socket pipes



DN/ID mm	DO pipe	Socket	
	Dimension mm	DO mm	M mm
360	400	458	175
400	450	508	175
500	560	622	195
600	675	732	225
700	788	845	240
800	900	957	270
1000	1125	1185	295



DN/ID: Nominal size = internal diameter  
 DN: Nominal outside diameter  
 DO: maximum socket outside diameter  
 M: Socket insertion depth  
 L: Standard length, 3, 6 og 12 m

Note! Dimensions are nominal values for SN4 (kN/m<sup>2</sup>) stiffness pipes and may vary from the finished product. The length tolerance L for pipes is ±50 mm (23°C). Pipe dimensions, stiffness classes and lengths for special applications can be individually designed.

# System and material data

Properties	Value	Unit	Standards
E-modulus, short term	≥ 800	MPa	ISO 527
Density	≈ 940	kg/m <sup>3</sup>	ISO 1183
Linear expansion coefficient	≈17·10 <sup>-5</sup>	K <sup>-1</sup>	
Thermal conductivity	≈ 0.36-0.50	W/(K · m)	
Specific heat capacity	≈ 2300-2900	J/(kg · K)	
Surface resistance	>10 <sup>13</sup>	Ω	
Poisson ratio	0.45	(-)	
Tensile strength	> 15	MPa	ISO 6259
Elongation at break	> 350	%	ISO 6259
Roughness k	0.25	mm	
Impact strength test temp.	-20	°C	EN 1401

## Operating temperature

	PE pipe	PP pipe
Short term	80°C	95°C
Long term	45°C	50°C



## Marking of pipes

- Manufacturer or product name
- Ring stiffness
- Materiale(PE, PP, other)
- Dimension, OD/ID
- Production code
- Approvals

**Moving**  
**> Forward**

**uponor**

**Uponor Infra A/S**

Bødkervej 5  
4450 Jyderup  
Denmark

**T** +45 46 40 53 11

**W** [www.uponor.dk/infra](http://www.uponor.dk/infra)

**E** [infra.dk@uponor.com](mailto:infra.dk@uponor.com)