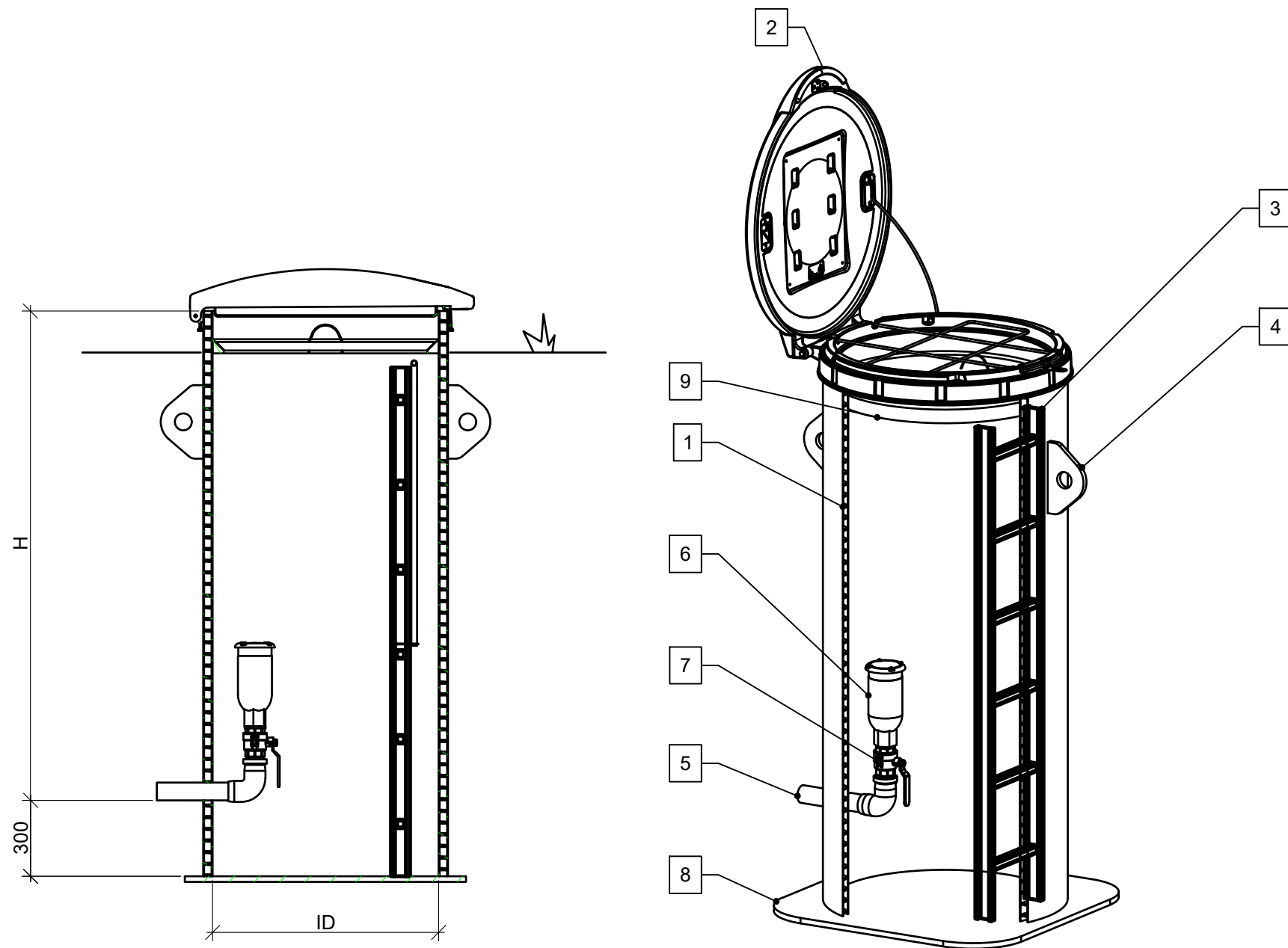


Uponor Flowise Air release chamber Ø800, off-line



Air release chamber 800			
Pos.	Description	Model/Size	Qty.
1	Chamber body PE100	ID 800 H=2600	1
2	Chamber top	Lockable lid 800 with fallprotection. Bolted	1
3	Ladder	Acc. selection	0-1
4	Lifting yoke		2-4
5	Pressure pipe	Acc. selection	1
6	Air release valve	Acc. selection	1
7	Ball valve/Gate valve	Acc. selection	1-2
8	Bottom, self anchoring		1
9	Insulation lid		

Selections	
Feature	Selection
Ladder*	<input type="checkbox"/> YES <input type="checkbox"/> NO
Groundwater level above invert	<input type="checkbox"/> YES <input type="checkbox"/> NO _____ m
Handrail*	<input type="checkbox"/> YES <input type="checkbox"/> NO
Pressure pipe depth from ground level	H= _____ mm
Pressure pipe diameter	D= _____ mm
Air release valve type	<input type="checkbox"/> Wastewater <input type="checkbox"/> Potable water
Valve function	<input type="checkbox"/> 1 way <input type="checkbox"/> 2 way <input type="checkbox"/> 3 way
Valve size	<input type="checkbox"/> 1" <input type="checkbox"/> 2" <input type="checkbox"/> DN50 <input type="checkbox"/> DN80 <input type="checkbox"/> DN100
Pressure gauge*	<input type="checkbox"/> YES <input type="checkbox"/> NO
Spool valve + connection*	<input type="checkbox"/> YES <input type="checkbox"/> NO

uponor

WWW.UPONOR.COM

CASE NUMBER	DRAWN BY	HANDLED BY
	---	---
DATE	CONTACT PERSON	
09.08.2023	---	
CONTENT		
Air release chamber Ø800, off-line		
SCALE	NUMBER	
1:20 (A3)	1140531-4	