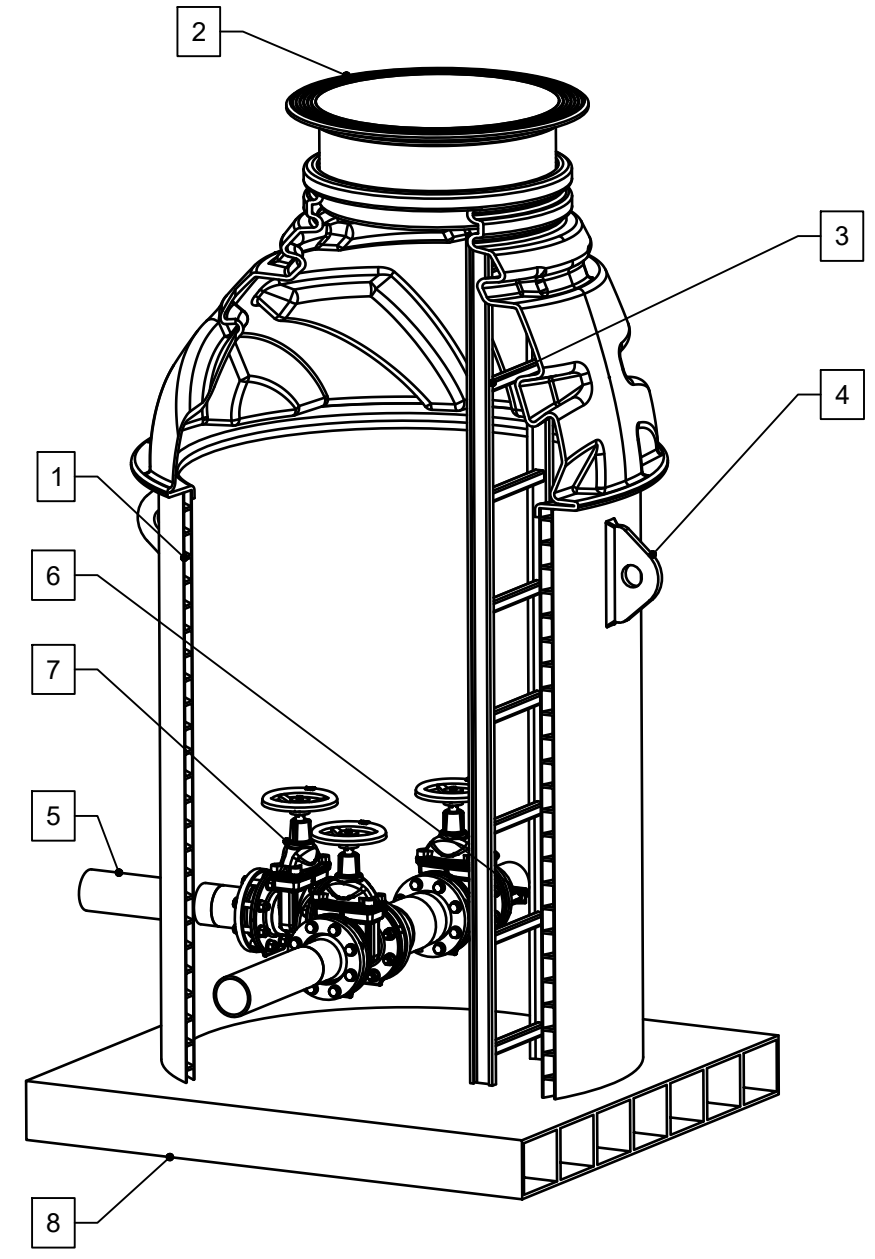
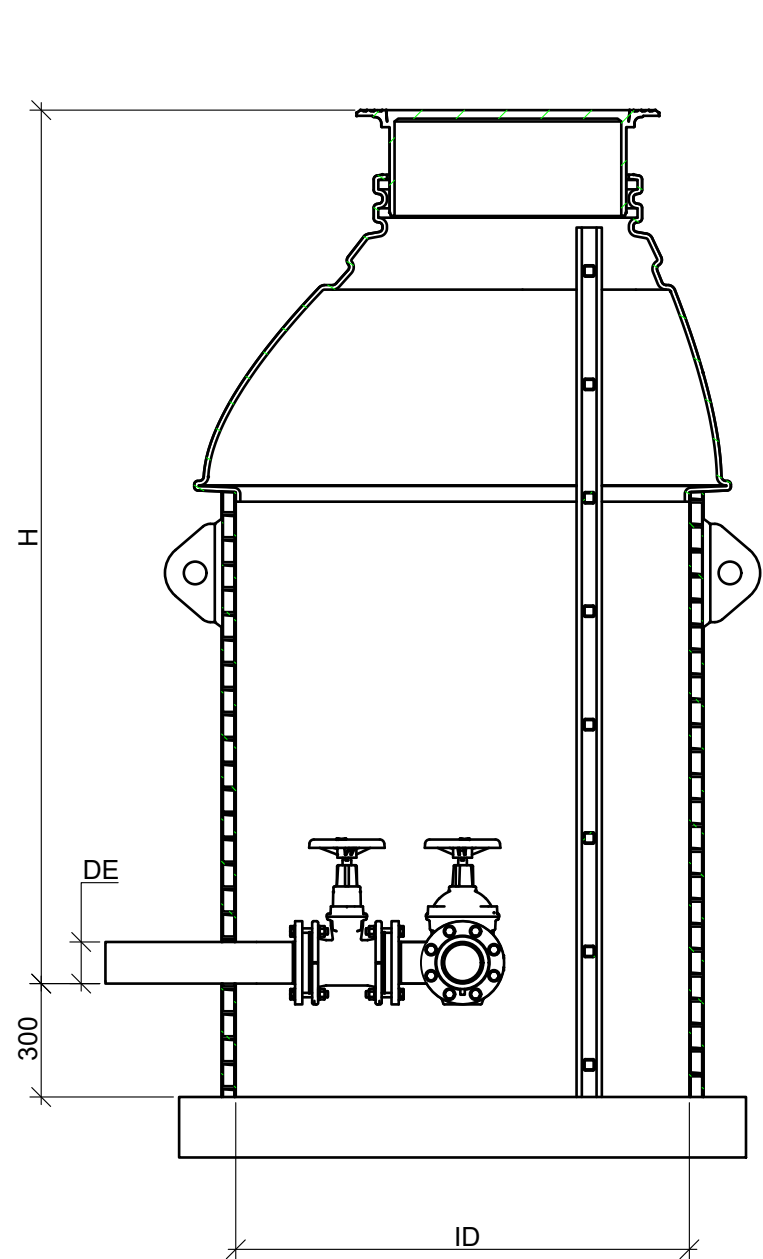


Uponor Flowise Valve chamber



Valve chamber			
Pos.	Type:	Model/Size	Qty.
1	Chamber body PE100	() 1000 () 1200 () 1250 () 1400 () 1600 () 2000 () 2400 () 3000 () Other: _____	1
2	Chamber top	() A () B () D () E	1
3	Ladder	() YES () NO () Handrail	0-1
4	Lifting yoke		2-4
5	Pressure pipe	Acc. selection	1
6	Flange adaptor	() YES () NO	
7	Valve	Acc. selection	1-2
8	Bottom, self anchoring		1

Selections	
Feature	Selection
Groundwater level above invert	() NO () YES _____ m
Pressure pipe depth from ground level	H= _____ mm
Pressure pipe diameter	D= _____ mm
Valve type	() Butterfly valve () Gate valve
Pressure gauge*	() YES () NO
Spool valve + connection	() YES () NO

Chamber top

<input type="checkbox"/> Ø 860/800 <input type="checkbox"/> Safety gridd	A	<input type="checkbox"/> 600X600 aluminium <input type="checkbox"/> 800X800 aluminium	B		1
				TYPE _____ DN _____	
<input type="checkbox"/> Ø600 cast iron 40tn <input type="checkbox"/> Ø630 cast iron 40tn <input type="checkbox"/> Without cast iron cover	D	<input type="checkbox"/> Ø630 cast iron 40tn 0,75m <input type="checkbox"/> Ø800 cast iron 40tn 0,75m	E		2
				TYPE _____ DN _____	
					3
				TYPE _____ DN _____	

Connection types according to plan.

uponor

WWW.UPONOR.COM

CASE NUMBER	DRAWN BY	HANDLED BY
DATE	CONTACT PERSON	
CONTENT		
Valve chamber		
SCALE	NUMBER	
1:20 (A3)	1140529-1	