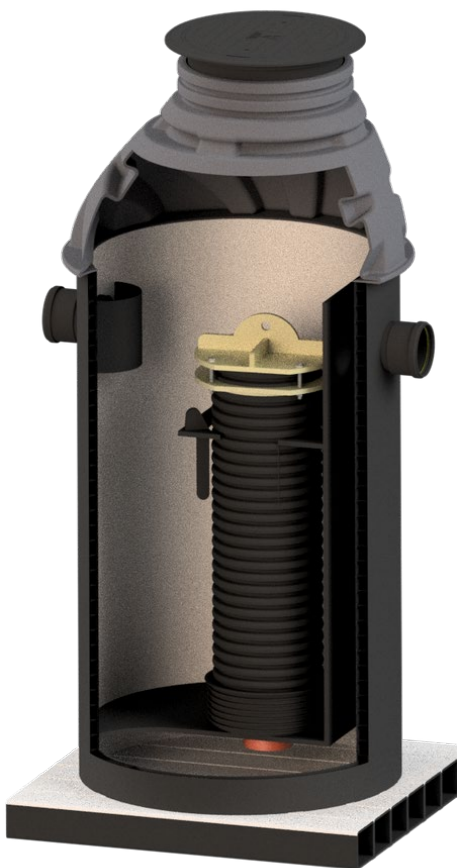




# Uponor Filter chamber



Robust and simple solution for treatment of storm water.

Dimensioned for areas up to 2ha.

Connection dimensions from 160-500

Easy maintenance

## Filter chamber

Filter chamber is used to treat storm water from different kind of pollution.

The chamber separates both sinking particles as well as floating debris and oil. Through the filter the suspended solids and heavy metals are removed from the storm water.

Easy yearly maintenance by removing sediments and floating debris and oil.

Filter exchanged every 2-5 year depending on the pollution load.

Application	Storm water management
-------------	------------------------

Material	PE
----------	----

Dimension	1000-2400 mm
-----------	--------------

Height	2865-4030 mm
--------	--------------

Flow	25-300 liters per second
------	--------------------------

Colour	Black
--------	-------

Standards	n.a
-----------	-----

Approvals	n.a
-----------	-----

# Properties and assortment

## System properties

The solution is dimensioned to handle a 10-year rain fall as the maximum flow with a functional flow of 20% to treat at least 95% of the yearly volume.

Filter chamber	160	200	250	315	400	400	500
ID	1000	1200	1400	1600	1600	2400	2400
DN connection	160	200	250	315	400	400	500
Height (mm)	2865	3245	3665	3155	3815	3510	4030
Filter	1 x 1,5 m	1 x 1,5 m	1 x 2,0 m	2 x 1,5 m	2 x 2,0 m	4 x 1,5 m	4 x 2,0 m
Max flow (l/s)	25	50	75	100	50	200	300
Functional flow (l/s)	5	10	15	20	30	40	60

# Moving > Water

uponor

**Uponor Corporation**

Ilmalantori 4

00240 Helsinki

Finland

**T** +358 (0)20 129 211

**F** + 358 (0)20 129 2841

[www.uponor.com](http://www.uponor.com)