



GP Solid Sheeting

Quality

Silicone Engineering's **kSi™** solid silicone sheeting is resilient and versatile. **kSi™** is the ideal sheeting material for gaskets and seals used in industrial applications where adverse temperatures are an issue – or where an inert, robust polymer is required. All our solid silicone sheeting is FDA approved for use with food and drink contact.

Using the latest state of the art processing equipment, Silicone Engineering's **kSi™** solid silicone sheeting is manufactured to the highest quality on calendared sheeting lines equipped with automated laser gauges for the tightest dimensional controls, high impingement nozzles that are used to evenly distribute the heat over the entire surface through the oven, enhancing quality, performance and repeatability.

Our vast expertise in calendaring silicone sheeting, coupled with the latest processing equipment ensures Silicone Engineering's sheeting performs to meet your application needs.

The thickness of the sheet is controlled along the width and length which provides consistency when kiss cutting and setting parameters upstream giving superior seal properties. Our translucent solid sheet is notably one of the clearest on the market.

kSi™ meets the following specification requirements

- FAR 25 / Jar 25/CS 25 Appendix F, Part 1/(a)(1) (iv) and (a)(1)(v) horizontal flammability tests
- EC1935/2004

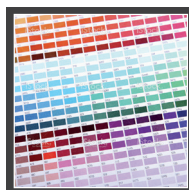
Features & benefits



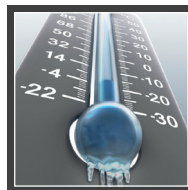
Manufactured in a range of thicknesses from 0.3mm (1/64) to 20mm (0.75)



Up to 1800mm (70') wide on selected products



Available in a range of colours



Thermally stable over a wide range of temperatures -60°C (-76°F) to 230°C (450°F)



Shore A hardness from 30-80



Excellent Ozone and UV resistance



FDA approved



BfR approved



WRAS approved for drinking water (Water Regulations Advisory Scheme BS69200)

Industry

- Electronics & Lighting
- Aerospace
- Automotive
- Food & Beverage
- HVAC
- Oil & Gas
- White Goods
- Mass Transit
- Construction
- Energy
- Industrial

Applications

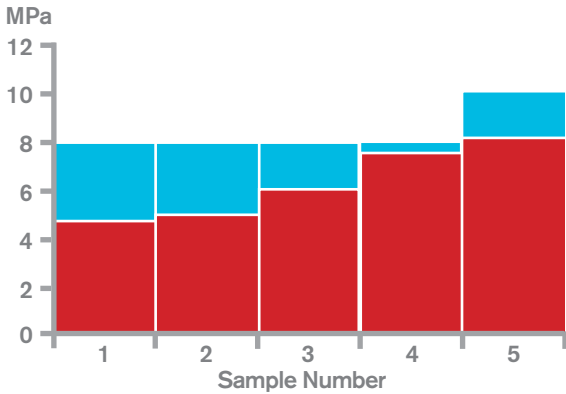
- Gaskets
- Vibration Dampening
- Vacuum Forming Presses
- Furniture Laminating
- Seals
- Press Pads
- High Temperature Protection



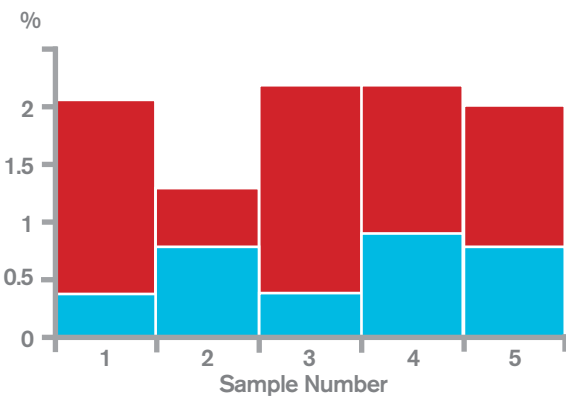


Technical Data

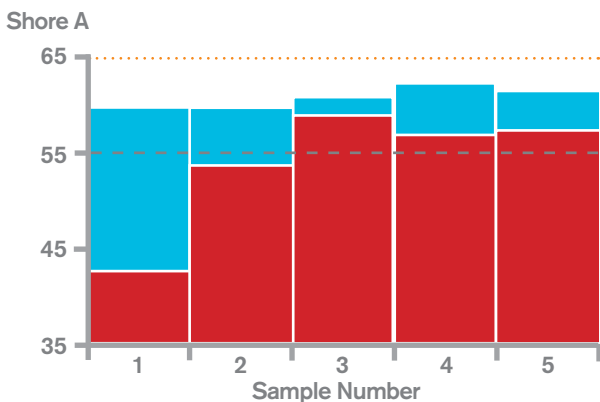
1 Solid - Tensile Strength



2 Solid - Volatile Loss



3 Solid - Shore Hardness



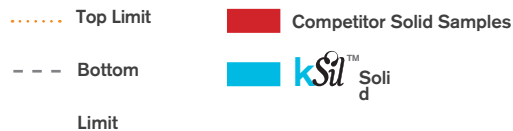
1 Higher tensile strength of **kSi™** solid silicone means that you can be confident that the material will stand up well to the mechanical rigours of service.

2 Low volatile loss of **kSi™** solid material means that you can be confident of a low risk of there being shrinkage of the seal or cross-contamination due to the silicone in service.

3 Consistent hardness results for **kSi™** solid material mean that you can trust that your product will show consistent performance from one batch to another.

Summary Technical Data - **kSi™** GP60

Property	Units	Typical Value
Hardness	Shore A	60
Elongation to failure	%	400
Tensile Strength	Mpa (psi)	10.0 (1450)
Tear Strength	N/mm (ppi)	22 (125)



*Competitor samples collated from different continents around the world

Silicone Engineering Ltd.

Headquarters: Greenbank Business Park
Blakewater Road
Blackburn
Lancashire BB1 3HU
T. +44 (0)845 154 1689
F. +44 (0)1254 583 519

European Office: Silicone Engineering Ltd
Parc d'activité CICEA 2
Bâtiment 4, 4, rue du courtill
35170 BRUZ, FRANCE
T. +33 (0) 2 99 65 69 78

US Office: Silicone Engineering Ltd
79405 Hwy 111,
Suite 9-368 La Quinta,
CA 92253
T. 760-200-9824

