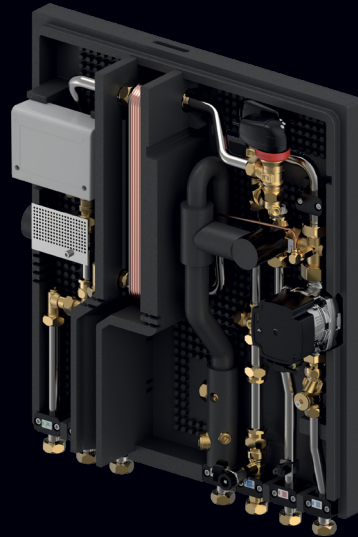


# Uponor Combi Port E-Pro

uponor

## High comfort with high efficiency

The adaptive control of the electric HIU guarantees the fastest reaction time without wasting energy.



### Installation/system recommendation

- For heating systems with high supply temperatures
- For high capacity for hot water tapping
- For central control systems via BUS

### Application

- Decentralised, instantaneous domestic hot water generation
- Underfloor heating systems
- Radiator heating systems

### Installation options

- In wall, with cabinets with and without manifolds
- On wall, with cabinets with and without manifolds
- On wall, without cabinets

### Certificates

- DVGW approval

### Specifications

- Heat interface unit fully assembled and pressure tested
- Unit covered with insulation case to avoid heat loss
- Technical limits of use in water for heating and plumbing are shown on technical data sheets
- DVGW-certified PM valve with patented triple-sealing technology
- Thermal insulation at hot water supply pipes
- Secondary mixing set with secondary pump for underfloor heating and motor valve for heating supply control, connected to Uponor Smatrix Move controller
- Weather-compensated flow control with motor valve and weekly program with nine preprogrammed schedules; pump logic in combination with Uponor Smatrix Base or Wave controller
- Supply line flow sensor
- Outdoor temperature sensor
- Hammer arrester to compensate for hydraulic impacts
- Differential pressure regulator in primary heating
- Thermosyphon for improved hygiene by preventing the exchanger from heating up during standby
- Zone valve in secondary heating circuit
- Cold water outlet with 110 mm × ¾" adapter for metering
- Strainer in primary supply and in primary return
- Connection port (marked) for an electrical earthing lug
- Max. operating pressure, heating: PN10
- Max. operating pressure, sanitary: PN10
- Max. operating temperature: 5–85 °C
- Max. differential pressure, prim. heating: 2.5 bar
- Min. pressure, sanitary: 2.0 bar
- Fitting material, sanitary: CW617N
- Fitting material, heating: CW617N, CW614N
- Pipe material: Stainless steel, 1.4401
- Components on bracket for on-wall mounting
- Measurements: W/H/D 390 × 578 × 280 mm
- Electrical power consumption: Max. 3 W

# Uponor Combi Port E-Pro

For domestic hot water and direct heating systems like radiator and underfloor heating with a fully electronic control. The fully insulated HIU can be placed everywhere in the building.

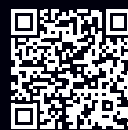
- 20, 25** Domestic hot water capacity indication (l/min.)
- CB** Copper-brazed stainless steel heat exchanger for domestic hot water preparation
- St** Stainless steel heat exchanger brazed without non-ferrous metal for domestic hot water preparation
- MD** Motorised control valve for domestic hot water
- MH** Motorised control valve for apartment heating circuit
- EL** Electronic temperature limiter for domestic hot water
- MS** Mixing set with circulation pump, thermostat, and non-return valve for apartment heating circuit
- BP** Supply line preheating function
- ZM** Circulation module for domestic hot water with safety valve, circulation pump, and differential pressure regulator
- IB** Fully insulated body
- SS** Thermostatic safety switch for apartment heating circuit

## UFH version for domestic hot water and direct heating with underfloor heating connection (including mixing circuit with heating pump)

Item no.	Accessories codes								
1095664	20	CB	MD	EL	MH	MS	BP	SS	IB
1095665	20	St	MD	EL	MH	MS	BP	SS	IB
1095666	25	CB	MD	EL	MH	MS	BP	SS	IB
1095667	25	St	MD	EL	MH	MS	BP	SS	IB

Item no.	Accessories codes								
1131510	20	CB	MD	EL	MH	BP	IB		
1131511	20	St	MD	EL	MH	BP	IB		
1131516	20	St	MD	EL	MH	ZM	BP	IB	
1131512	25	CB	MD	EL	MH	BP	IB		
1131513	25	St	MD	EL	MH	BP	IB		
1131517	25	St	MD	EL	MH	ZM	BP	IB	

## Further information on Uponor Combi Port E-Pro



➤ Technical information

# uponor

### Uponor Corporation

Ilmalantori 4  
00240 Helsinki  
Finland  
www.uponor.com  
1146094 - 08/2024 - EN

# Moving ➤ Water