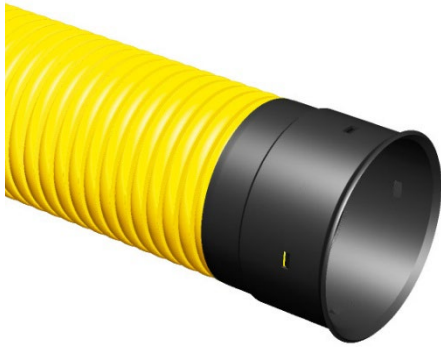


## Technical datasheet

# Cable Ducting DW Pipes, 6M



- Made of PE.
- SN8 or SN16.
- Flexible construction makes the pipe both strong and easy to work with.
- The low weight provides a fast and less labour-intensive installation.

### Cable Ducting DW pipes

Double-walled pipe with corrugated outer layer and smooth inner layer. The pipe contains a fixed socket. The pipe is manufactured from PE. The smooth inside makes it easy to route cables, even when changing direction.

### Technical data

Specifications	
Application	Cable protection system
Material	Polyethylene (PE)
Colour	Yellow or Red
Dimensions	110, 140, 160, 200
Class	SN8 or SN16
Standards	Ring stiffness is tested according to ISO 9969:2016

### Properties

System properties		Standard
Ring stiffness	SN8 SN16	ISO 9969:2016

### Assortment

The assortment for Cable Ducting DW pipes 6M is available at <https://www.uponor.com/fi-fi/tuoteluettelo-infra/kaapelinsuojaus/kaapelinsuojaputket/tuplaputket-6m>

# Excellence in Flow

Visit our webpage to get in touch with your local specialist:

**[www.gfps.com/our-locations](http://www.gfps.com/our-locations)**



The information and technical data (altogether "Data") herein are not binding, unless explicitly confirmed in writing.  
The Data neither constitutes any expressed, implied or warranted characteristics, nor guaranteed properties or a guaranteed durability. All Data is subject to modification. The General Terms and Conditions of Sale of Georg Fischer Piping Systems apply.

