

GF Building Flow Solutions

# Uponor Vario cabinets

EN Technical information



# Table of contents

- 1    System description..... 3**
  - 1.1   Components..... 3
  - 1.2   Copyright and disclaimer..... 3
  
- 2    Planning/design..... 5**
  - 2.1   Configuration..... 5
  
- 3    Installation and operation..... 9**
  - 3.1   Preparing for installation..... 9
  - 3.2   Practical features..... 9
  
- 4    Technical data..... 11**
  - 4.1   Dimensions..... 11

# 1 System description

The Uponor Vario cabinets are available in various designs and dimensions. They provide sufficient space for manifolds and other components. For example, you can install Uponor control components, heat meters and Uponor Fluvia T and E pump groups even in small cabinets.

The height- and depth-adjustable Uponor Vario cabinets can be installed in wall niches or on-wall. The universal rail fastener and the supplied fastening material allows easy and quick installation of the manifolds and other components.

The Uponor Vario in-wall cabinet (IW) is installed in a wall niche. The Uponor Vario on-wall cabinet (OW) is installed on the wall surface. All installation components are installed on the supplied rails (included in delivery). Refer to the IM Uponor Vario cabinets.

The frame with an integrated front panel allows a depth adjustment for installation of Uponor Vario PLUS, Vario M and Vario S manifolds, as well as Uponor control components, heat meters and Uponor Fluvia T and Move pump groups.

The cabinets are adjustable in height and depth:

- Height adjustment: max. 200 mm
- Depth adjustability: 80 – 120 mm or 110 – 150 mm

## Cabinets for on-wall installation



RPD0000025

White powder-coated Uponor Vario cabinet OW for installation of Uponor Vario PLUS, Vario M and Vario S manifolds, as well as Uponor control components, heat meters and Uponor Fluvia T and Move pump groups.

The installation components are either installed directly inside the on-wall cabinet or optionally on the Uponor Vario rear board using rails.

The revolving door includes a lock **and can be extended with an** Uponor cylinder lock, for example, in public buildings.

The rear board has rectangular holes to allow cabinet height adjustment of  $\pm 15$  mm if necessary.

## 1.2 Copyright and disclaimer

“Uponor” is a registered trademark of Uponor Corporation.

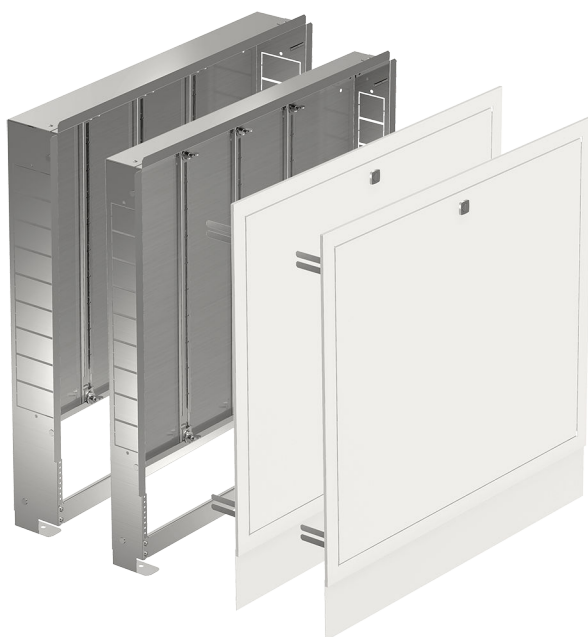
Uponor has prepared this document solely for information purposes, images are only representations of the products. The content (text and images) of the document is protected by worldwide copyright laws and treaty provisions. You agree to comply with these when using the document. Modification or use of any of the content for any other purpose is a violation of Uponor's copyright, trademark, and other proprietary rights.

While Uponor has made all effort to ensure that the document is accurate, the company does not guarantee or warrant the accuracy of the information. Uponor reserves the right to change the product

## 1.1 Components

!	<b>Note</b> For more detailed information, product range and documentation, please visit the Uponor website: <a href="http://www.uponor.com">www.uponor.com</a> .
!	<b>Note</b> For detailed information about the product range, dimensions and availability, please refer to the Uponor price list.

## Cabinets for in-wall installation



RPD0000028

The range of Uponor Vario cabinets IW includes six different cabinet widths for universal use, even in large projects. These cabinets are available in two wall installation depths: IW 110 and IW 80. They are made of rigid galvanised sheet steel construction with all visible components white powder-coated (RAL 9016).

The cabinet body inside the wall is equipped with removable rails that simplify the pre-mounting of the manifold and additional components on the workbench. The fixing set for the rail fastening is included in the delivery.

portfolio and the related documentation without prior notification, in line with its policy of continuous improvement and development.

This is a generic, European-wide document version. The document may show products that are not available in your location for technical, legal, commercial, or other reasons. Therefore, check the Uponor product/price list in advance whether the product is deliverable in your location.

**Always make sure that the system or product complies with current local standards and regulations. Uponor cannot guarantee the full compliance of the product portfolio and related documents with all local regulations, standards, or working methods.**

**Uponor disclaims all warranties related to the content of this document, expressed or implied, to the fullest extent permissible unless otherwise agreed or statutory.**

**Uponor is under no circumstances liable for any indirect, special, incidental, or consequential damage/loss that results from the use or inability to use the product portfolio and related documents.**

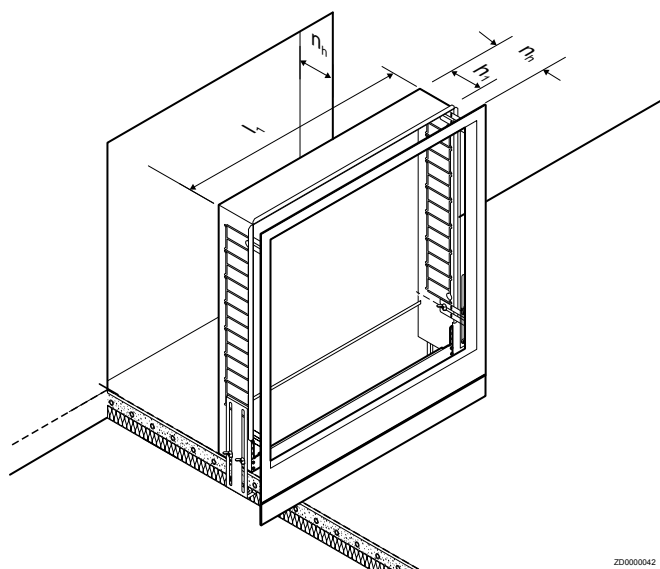
For any questions or queries, please visit the local Uponor website or speak to your Uponor representative.

## 2 Planning/design

### 2.1 Configuration


Refer to the chapter Technical Data for configuring Uponor manifolds, pump groups and connection sets in in-wall and on wall cabinets.

#### Uponor Vario cabinets in-wall (IW)




Type	$l_1$
IW Vario distribution cabinet	550
(flush-mounted distribution cabinet)	700
	850
	1000
	1150
	1300

#### Uponor Vario PLUS manifold

	Connection at manifold	Cabinet width l <sub>1</sub>						h <sub>1</sub>	n <sub>h</sub>
		550	700	850	1000	1150	1300		
 HPD000030	Amount of circuits								
	Vertical without heat meter connection set	2-4	5-7	8-10	11-13	14-15	-	80	95
	Vertical with heat meter connection set	2-4	5-7	8-10	11-13	14-15	-	80	95
	Horizontal with ball valve	2-5	6-8	9-11	12-14	15	-	80	80
	Horizontal with heat meter connection set	-	2-3	4-6	7-9	10-12	13-15	80	95
	Vertical with Fluvia pump group Push-23-B	2-3	4-6	7-9	10-12	13-15	-	110	110
	Vertical with Fluvia pump group MPG 10/ Push-23-A	-	2-4	5-7	8-10	11-13	14-15	110	110
	Horizontal with Vario differential pressure regulator + ball valve	2-4	5-7	8-10	11-13	14-15	-	80	80
	Horizontal with Vario differential pressure regulator + ball valve + heat meter connection set	-	2	3-5	6-8	9-11	12-14	95	95
	Vertical with Vario differential pressure regulator + ball valve with heat meter connection set	2	3-5	6-8	9-11	12-14	15	95	95
Vertical with Vario differential pressure regulator + ball valve without heat meter connection set	2	3-5	6-8	9-11	12-14	15	95	95	


Dimensions in mm

## Uponor Vario M manifold

 RP0000029	Connection at manifold	Cabinet width l <sub>1</sub>						h <sub>1</sub>	n <sub>h</sub>	
		550	700	850	1000	1150	1300			
	Amount of circuits									
	Vertical without heat meter connection set	2-5	6-8	9-10	11-13	14-16	-	80	95	
	Vertical with heat meter connection set	2-5	6-8	9-10	11-13	14-16	-	80	95	
	Horizontal with ball valve	2-6	7-9	10-11	12-14	15-16	-	80	80	
	Horizontal with heat meter connection set	-	2-4	5-7	8-10	11-12	13-15	80	95	
	Vertical with Fluvia pump group Push-23-B	2-4	5-7	8-10	11-12	13-15	16	110	110	
	Vertical with Fluvia pump group MPG 10/ Push-23-A	2	3-5	6-8	9-10	11-13	14-16	110	110	
	Horizontal with Vario differential pressure regulator + ball valve	2-4	5-7	8-10	11-12	13-15	16	80	80	
Horizontal with Vario differential pressure regulator + ball valve + heat meter connection set	-	2	3-5	6-8	9-11	12-15	80	95		
Vertical with Vario differential pressure regulator + ball valve with heat meter connection set	2-3	4-6	7-9	10-11	12-14	15-16	80	95		
Vertical with Vario differential pressure regulator + ball valve without heat meter connection set	2-3	4-6	7-9	10-11	12-14	15-16	80	95		

Dimensions in mm

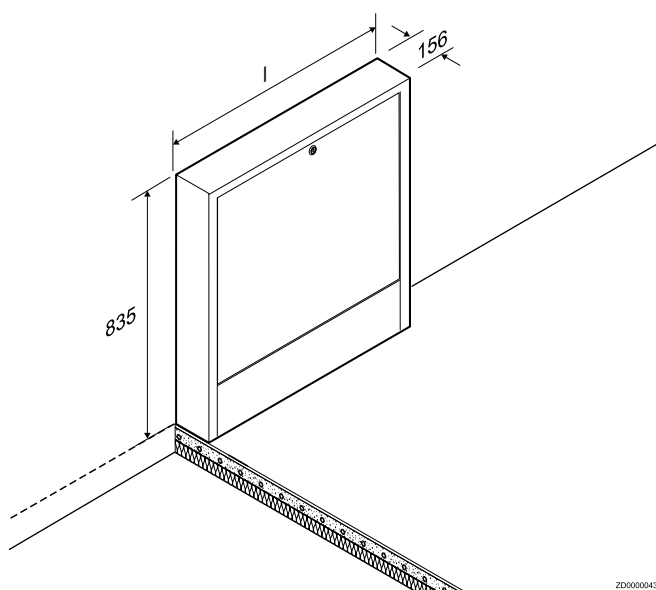
## Uponor Vario S manifold

	Connection at manifold	Cabinet width l <sub>1</sub>						h <sub>1</sub>	n <sub>h</sub>	
		550	700	850	1000	1150	1300			
	Amount of circuits									
	Vertical without heat meter connection set	2-5	6-8	9-10	11-13	14-16	-	80	95	
	Vertical with heat meter connection set	2-5	6-8	9-10	11-13	14-16	-	80	95	
	Horizontal with ball valve	2-6	7-9	10-11	12-14	15-16	-	80	80	
	Horizontal with heat meter connection set	-	2-4	5-7	8-10	11-12	13-15	80	95	
	Vertical with Fluvia pump group Push-23-B	2-4	5-7	8-10	11-12	13-15	16	110	110	
	Vertical with Fluvia pump group MPG 10/ Push-23-A	2	3-5	6-8	9-10	11-13	14-16	110	110	
	Horizontal with Vario differential pressure regulator + ball valve	2-4	5-7	8-10	11-12	13-15	16	80	80	
	Horizontal with Vario differential pressure regulator + ball valve + heat meter connection set	-	2	3-5	6-8	9-11	12-15	80	95	
	Vertical with Vario differential pressure regulator + ball valve with heat meter connection set	2-3	4-6	7-9	10-11	12-14	15-16	80	95	
Vertical with Vario differential pressure regulator + ball valve without heat meter connection set	2-3	4-6	7-9	10-11	12-14	15-16	80	95		

Dimensions in mm

**Uponor Vario S body FM is excluded.**


## Uponor Vario cabinets on wall (OW)



ZD0000043


Type	I
OW Vario distribution cabinet (Surface-mounted distribution cabinet)	450
	600
	750
	900
	1050
	1200
	1350
	1550

## Uponor Vario PLUS manifold

	Connection at manifold	Cabinet width I							
		450	600	750	900	1050	1200	1350	1550
 HPO000030	Amount of circuits								
	Vertical without heat meter connection set	-	2-4	5-7	8-10	11-13	14-15	-	-
	Vertical with heat meter connection set	-	2-4	5-7	8-10	11-13	14-15	-	-
	Horizontal with ball valve	2	3-5	6-8	9-11	12-14	15	-	-
	Horizontal with heat meter connection set	-	-	2-3	4-6	7-9	10-12	13-15	-
	Vertical with Fluvia pump group Push-23-B	-	2-3	4-6	7-9	10-12	13-15	-	-
	Vertical with Fluvia pump group MPG 10/ Push-23-A	-	-	2-4	5-7	8-10	11-13	14-15	-
	Horizontal with Vario differential pressure regulator + ball valve	-	2-4	5-7	8-10	11-13	14-15	-	-
	Horizontal with Vario differential pressure regulator + ball valve + heat meter connection set	-	-	2	3-5	6-8	9-11	12-14	15
	Vertical with Vario differential pressure regulator + ball valve with heat meter connection set	-	2	3-5	6-8	9-11	12-14	15	-
Vertical with Vario differential pressure regulator + ball valve without heat meter connection set	-	2	3-5	6-8	9-11	12-14	15	-	

Dimensions in mm


## Uponor Vario M manifold

	Connection at manifold	Cabinet width I								
		450	600	750	900	1050	1200	1350	1550	
 RP10000029	Amount of circuits									
	Vertical without heat meter connection set	2	3-5	6-8	9-10	11-13	14-16	-	-	
	Vertical with heat meter connection set	2	3-5	6-8	9-10	11-13	14-16	-	-	
	Horizontal with ball valve	2-3	4-6	7-9	10-11	12-14	15-16	-	-	
	Horizontal with heat meter connection set	-	-	2-4	5-7	8-10	11-12	13-15	16	
	Vertical with Fluvia pump group Push-23-B	-	2-4	5-7	8-10	11-12	13-15	16	-	
	Vertical with Fluvia pump group MPG 10/ Push-23-A	-	2	3-5	6-8	9-10	11-13	14-16	-	

	Connection at manifold	Cabinet width I							
		450	600	750	900	1050	1200	1350	1550
	Horizontal with Vario differential pressure regulator + ball valve	-	2-4	5-7	8-10	11-12	13-15	16	-
	Horizontal with Vario differential pressure regulator + ball valve + heat meter connection set	-	-	2	3-5	6-8	9-11	12-15	16
	Vertical with Vario differential pressure regulator + ball valve with heat meter connection set	-	2-3	4-6	7-9	10-11	12-14	15-16	-
	Vertical with Vario differential pressure regulator + ball valve without heat meter connection set	-	2-3	4-6	7-9	10-11	12-14	15-16	-

Dimensions in mm

## Uponor Vario S manifold

	Connection at manifold	Cabinet width I							
		450	600	750	900	1050	1200	1350	1550
	Amount of circuits								
	Vertical without heat meter connection set	2	3-5	6-8	9-10	11-13	14-16	-	-
	Vertical with heat meter connection set	2	3-5	6-8	9-10	11-13	14-16	-	-
	Horizontal with ball valve	2-3	4-6	7-9	10-11	12-14	15-16	-	-
	Horizontal with heat meter connection set	-	-	2-4	5-7	8-10	11-12	13-15	16
	Vertical with Fluvia pump group Push-23-B	-	2-4	5-7	8-10	11-12	13-15	16	-
	Vertical with Fluvia pump group MPG 10/ Push-23-A	-	2	3-5	6-8	9-10	11-13	14-16	-
	Horizontal with Vario differential pressure regulator + ball valve	-	2-4	5-7	8-10	11-12	13-15	16	-
	Horizontal with Vario differential pressure regulator + ball valve + heat meter connection set	-	-	2	3-5	6-8	9-11	12-15	16
	Vertical with Vario differential pressure regulator + ball valve with heat meter connection set	-	2-3	4-6	7-9	10-11	12-14	15-16	-
	Vertical with Vario differential pressure regulator + ball valve without heat meter connection set	-	2-3	4-6	7-9	10-11	12-14	15-16	-

Dimensions in mm

**Uponor Vario S body FM is excluded.**



# 3 Installation and operation



## Note

The installation must be performed by a qualified person in accordance with local standards and regulations.

As a guidance, always read and follow the instructions given in respective Uponor installation manual. The instructions are available for download on the Uponor website.



Uponor IM Vario manifolds  
Uponor Smatrix and Base control units  
Uponor Vario actuators



[www.uponor.com/services/download-centre](http://www.uponor.com/services/download-centre)

## 3.1 Preparing for installation



## Caution!

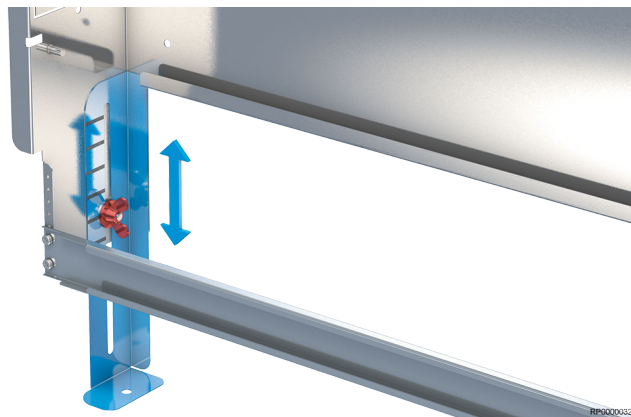
Uponor is not liable for any damage resulting from improper use of Uponor products.

Conform to the following measures when installing the Uponor Vario cabinet:

1. The Uponor Vario cabinet is used as installation and operation place for Uponor components like manifolds, room control equipment, pump groups, corresponding heat meter sets, valves and similar. After installation, the pipe loops for the Uponor underfloor heating system are connected and ready for operation.
2. Check the cabinet for completeness prior to installation. Retighten screws that have loosened due to transport.
3. Read and follow the instructions in the installation manual.
4. Conversion or modification to the Uponor Vario cabinet is only permitted upon agreement with Uponor.
5. Damage caused to an Uponor Vario cabinet as a result of an infringement will void the Uponor warranty.
6. Properly inform the end user about the cabinet installation and hand over this technical information together with the inventory documents.
7. For further information regarding the application or operation of Uponor products, please contact your local Uponor office or visit [www.uponor.com](http://www.uponor.com).

## 3.2 Practical features

### Height adjustment



*In-wall cabinet: Height adjustment of the feet in the cabinet.*

The height-adjustable feet allow millimetre-accurate adjustment of the cabinet height to the floor's level.

### Depth adjustment



*In-wall cabinets can be depth-adjusted according to the available wall niche.*

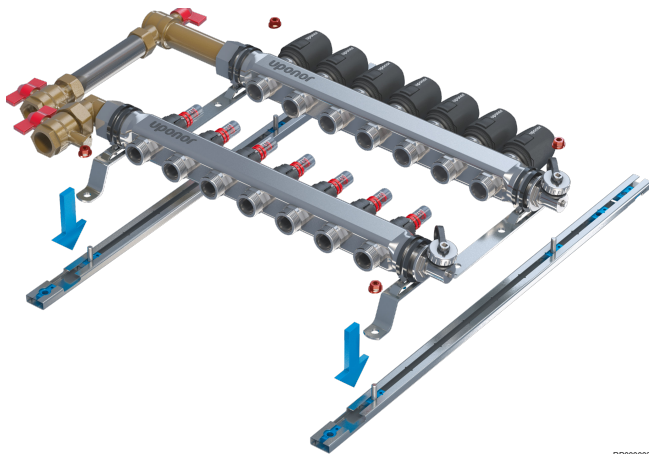
The cabinet depth is set according to the existing wall niche.

The in-wall cabinets IW 80 are typically installed in drywall applications. The depth of the wall planking ( $2 \times 12,5 = 25$  mm) must be included in the available cabinet depth.

When installing metering sets in the in-wall cabinet IW 80, a cabinet depth of at least 95 mm must be provided.

Install Uponor pump groups in the in-wall cabinets IW 110. In-wall cabinets IW 80 are not suitable.

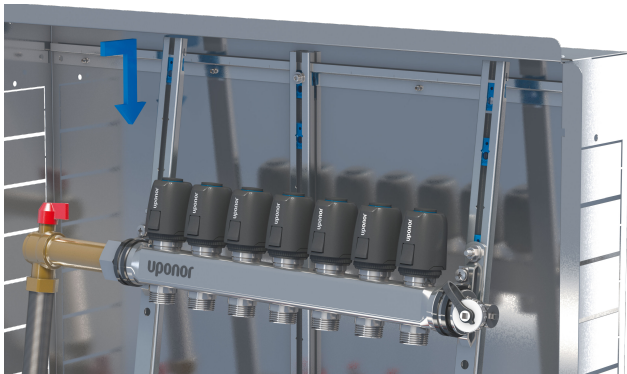
## Manifold fixation



RP0000034

### *Fixing Uponor manifolds in C-rails.*

The manifold can be easily mounted on the C-rails at the workbench. Subsequently, the assembly takes place within the in-wall cabinet and will stay there.

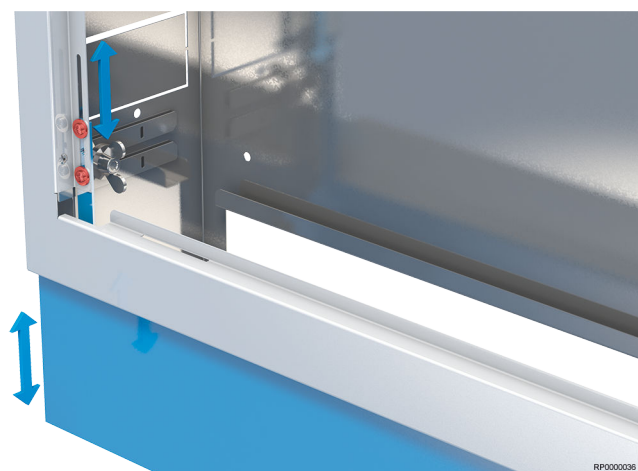


RP0000035

### *Hang the manifold into the cabinet.*

The special holding elements allow easy and fast attachment of all pre-assembled components in the cabinet.

## Frame adaptation

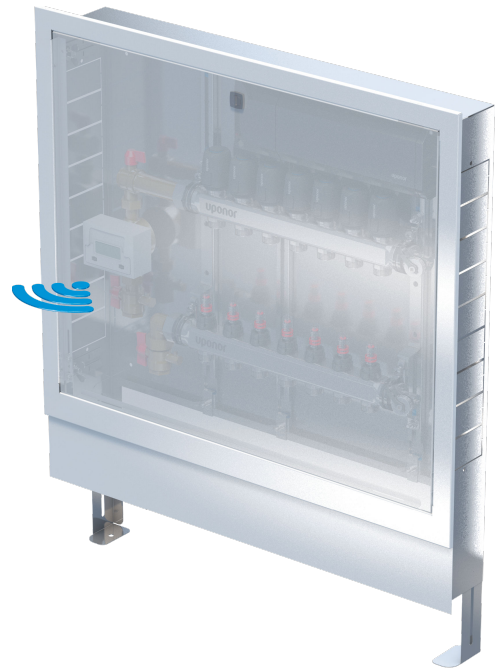


RP0000036

### *Adaptation of the frame to the floor covering.*

If required, the front sheet integrated in the cabinet frame can be adjusted in height. This helps to give an exact fit to the floor level.

## Remote reading



RP0000037

### *Remote reading at metering sets.*

Optionally, the cabinet can be equipped with a plastic door. This allows remote reading of devices such as heat meters.

# 4 Technical data

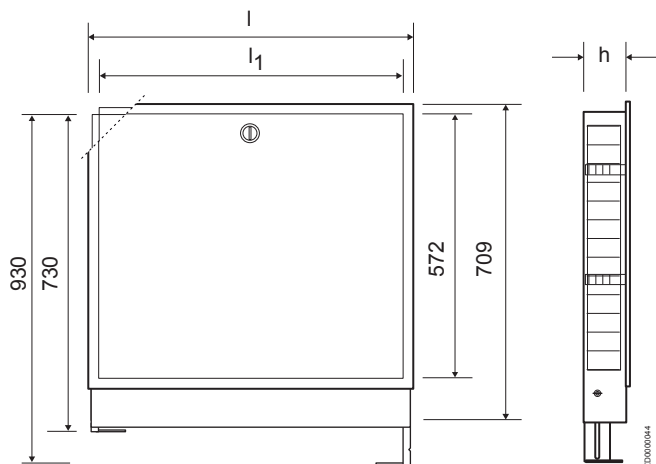
## 4.1 Dimensions



### Note

Detailed information about the range of components, dimensions etc is available in the price list.

### Uponor Vario cabinets in-wall (IW)



Dimensions in mm

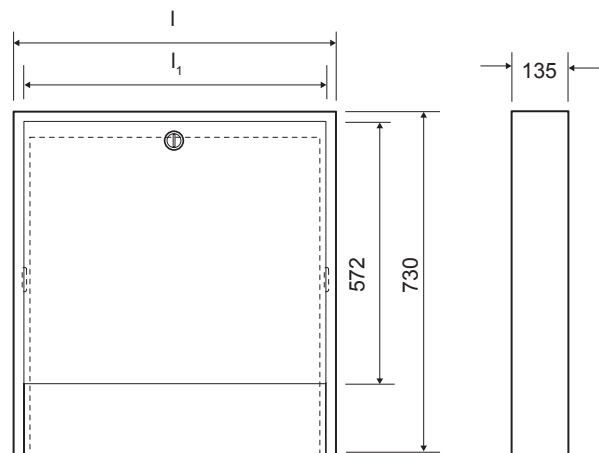
#### Uponor Vario cabinet IW 110

Type	I	I <sub>1</sub>	h
IW 550/110	605	550	110
IW 700/110	755	700	110
IW 850/110	905	850	110
IW 1000/110	1055	1000	110
IW 1150/110	1205	1150	110
IW 1300/110	1355	1300	110

#### Uponor Vario cabinet IW 80

Type	I	I <sub>1</sub>	h
IW 550/80	605	550	80
IW 700/80	755	700	80
IW 850/80	905	850	80
IW 1000/80	1055	1000	80
IW 1150/80	1205	1150	80
IW 1300/80	1355	1300	80

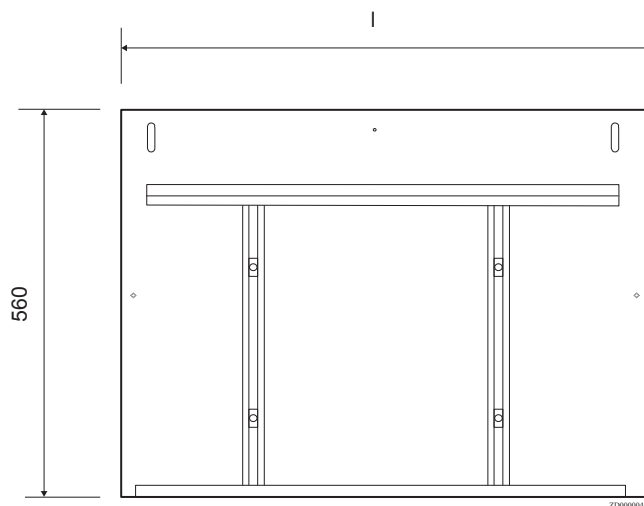
### Uponor Vario cabinets on wall (OW)



Dimensions in mm

Type	I	I <sub>1</sub>
OW 450	450	389
OW 600	600	539
OW 750	750	689
OW 900	900	839
OW 1050	1050	989
OW 1200	1200	1139
OW 1350	1350	1289
OW 1550	1550	1489

### Uponor Vario cabinet rear board (OW)



Dimensions in mm

Type	I
OW 450	430
OW 600	580
OW 750	730
OW 900	880
OW 1050	1030
OW 1200	1180

Type	l
OW 1350	1330
OW 1550	1530



**Uponor GmbH**

Industriestraße 56,  
D-97437 Hassfurt, Germany

1095069 v2\_02\_2026  
Production: GF BFS/SKA

Uponor reserves the right to make changes, without prior notification,  
to the specification of incorporated components in line with its policy of  
continuous improvement and development.



**[www.uponor.com](http://www.uponor.com)**