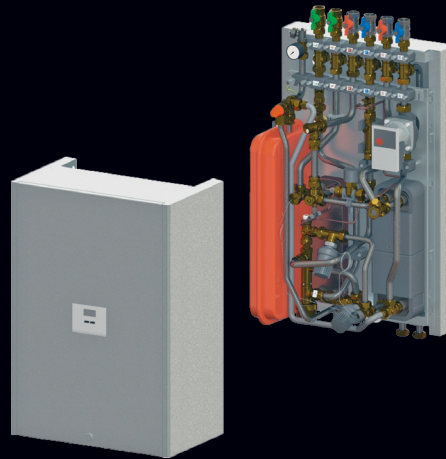


# Uponor Combi Port M-ProX

uponor

## Simple integration into complex systems

A second heat exchanger with an additional pump makes it possible to keep the system pressure running at a high level.



### Installation/system recommendation

- For heating systems with high flow temperatures and high mains pressure

### Application

- Decentralised, instantaneous domestic hot water generation
- Underfloor heating systems
- Radiator heating systems

### Installation options

- On-Wall without cabinet

### Certificates

- DVGW approval

### Specifications

- Port completely assembled and pressure tested
- DVGW certified PM Valve with patented triple-sealing technology
- Pipe clamps made of plastic for sound protection and thermal decoupling
- 2 heat exchangers: for heating and domestic hot water
- Thermostatic bypass valve
- Secondary heating circulation pump with temperature control
- Spacer for heat meter 110 mm x3/4"
- Spacer for water meter 110 mm x3/4"
- Fill and drain valve
- Strainer for cold water 0,5 mm
- Strainer for primary heating supply line 0,5 mm
- Connection possibility (marked) of an electrical earthing lug
- Max. operating pressure heating: PN10
- Max. operating pressure sanitary: PN10
- Max. operating temperature: 85 °C
- Min. pressure primary sanitary: 2 bar
- Max. differential pressure primary heating: 2,5 bar
- Fitting material sanitary: CW617N
- Fitting material heating: CW617N, CW614N
- Pipe work: stainless steel 1.4401
- Including cabinet cover, white powder coated (RAL 9016)

# Uponor Combi Port M-ProX

For domestic hot water and indirect heating systems using a second heat exchanger with heating circuit connections, including a circulation pump and an expansion tank mounted on the side of the heat interface unit.

## Accessories codes

- 15, 21** Domestic hot water capacity indication (l/min.)
- CB** Copper-brazed stainless steel heat exchanger for domestic hot water preparation
- BP** Supply line preheating function
- DI** Primary differential pressure controller at the heat interface unit inlet
- TL** Thermostatic temperature limiter for domestic hot water, with submersible sensor
- ZH** Apartment heating circuit circulation system, including circulation pump, thermostatic flow controller, and expansion tank
- CR** Heat interface metal cover casing, white powder coated (RAL 9016)
- NI** No pipe insulation and/or insulated cover
- NC** No cold water outlet from heat interface unit

Item no.	Accessories codes								
<b>1095636</b>	15	CB	BP	DI	TL	ZH	CR	NI	NC
<b>1095637</b>	21	CB	BP	DI	TL	ZH	CR	NI	NC

Further information  
on Uponor Combi  
Port M-ProX



➤ Technical  
information

# uponor

## Uponor Corporation

Illmalantori 4  
00240 Helsinki  
Finland  
www.uponor.com  
1146100 - 08/2024 - EN

# Moving ➤ Water