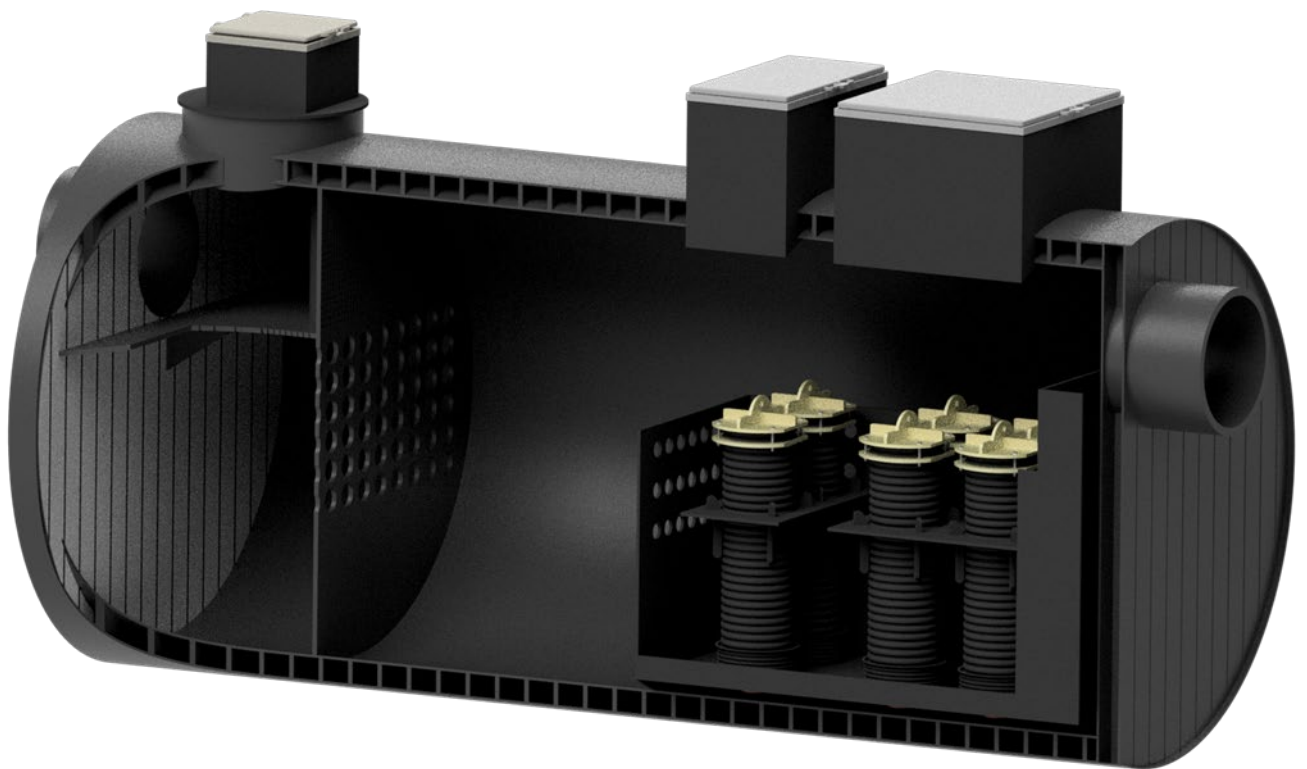




# Installation manual

## Vault



# Contents

1. Intended use.....	3
2. Always follow local regulations .....	3
3. Before installation.....	3
4. Installation.....	3
5. After installation.....	3
6. Service.....	4
7. Technical data.....	4
8. Maintenance .....	4
9. References .....	4
10. Operation journal.....	5
11. Appendix.....	6

## 1. Intended use

Vault is a compact full treatment solution for Storm water. It has three major functions: the removal of debris, the removal of particles by sedimentation, and the filtering of storm water.

## 2. Always follow local regulations

This document refers to local regulations for infrastructure, listed below:

- Finland: FI FIL77, Infra RYL
- Sweden: AMA Anläggning
- Denmark: DS430 and DS475
- Norway: NPG

## 3. Before installation

When receiving the chambers, handle carefully to avoid damage by lifting equipment.

Never unload by tipping. Check each chamber for transport damage or product flaws.

Prepare the storage site so that chambers are stored away from direct sunlight and heat, set on wooden racks. Do not stack the chambers.

## 4. Installation

1. Dig the chamber pit to correct depth (non-frost depth). Coverage of the Vault should be chosen depending of the intended traffic load.

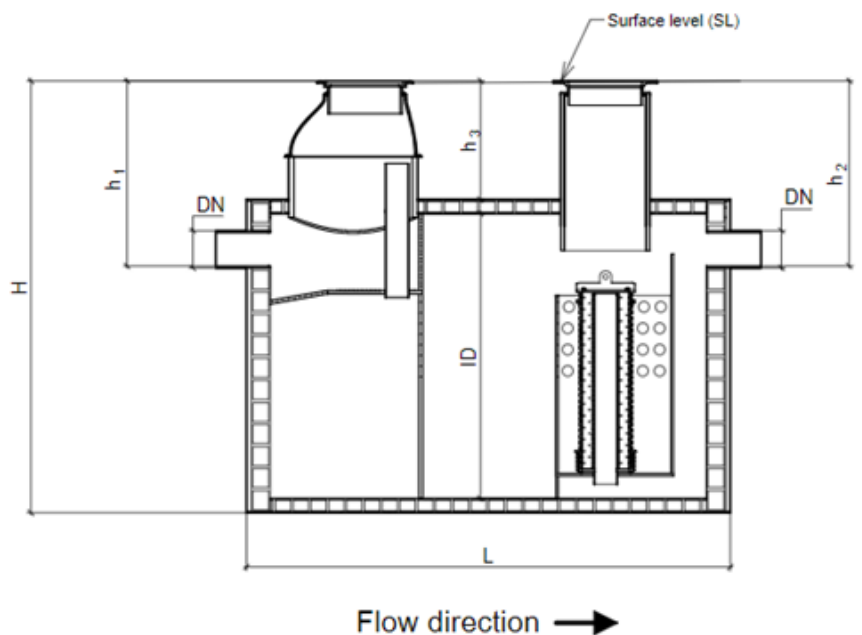
2. Add sand layer to correct chamber invert level. Compact the sand.

Make sure the base is level.

3. Install pipe connections. Use rubber sealings for tightness.

4. Fill the chamber pit with gravel. Compact in layers up to the top according to local regulations.

To prevent sinking, take special care to ensure proper compaction of the backfill material beneath the pipe-chamber joints.



## 5. After installation

Keep a lid on the chamber and make sure that no unauthorized persons can enter the chamber, by locking the lid.

## **6. Service**

Normally no service is required.

## **7. Technical data**

Drawings are provided with the chamber when ordering.

## **8. Maintenance**

See Appendix for maintenance instructions.

## **9. References**

The following documentation is available at [www.uponor.com](http://www.uponor.com) for your reference.

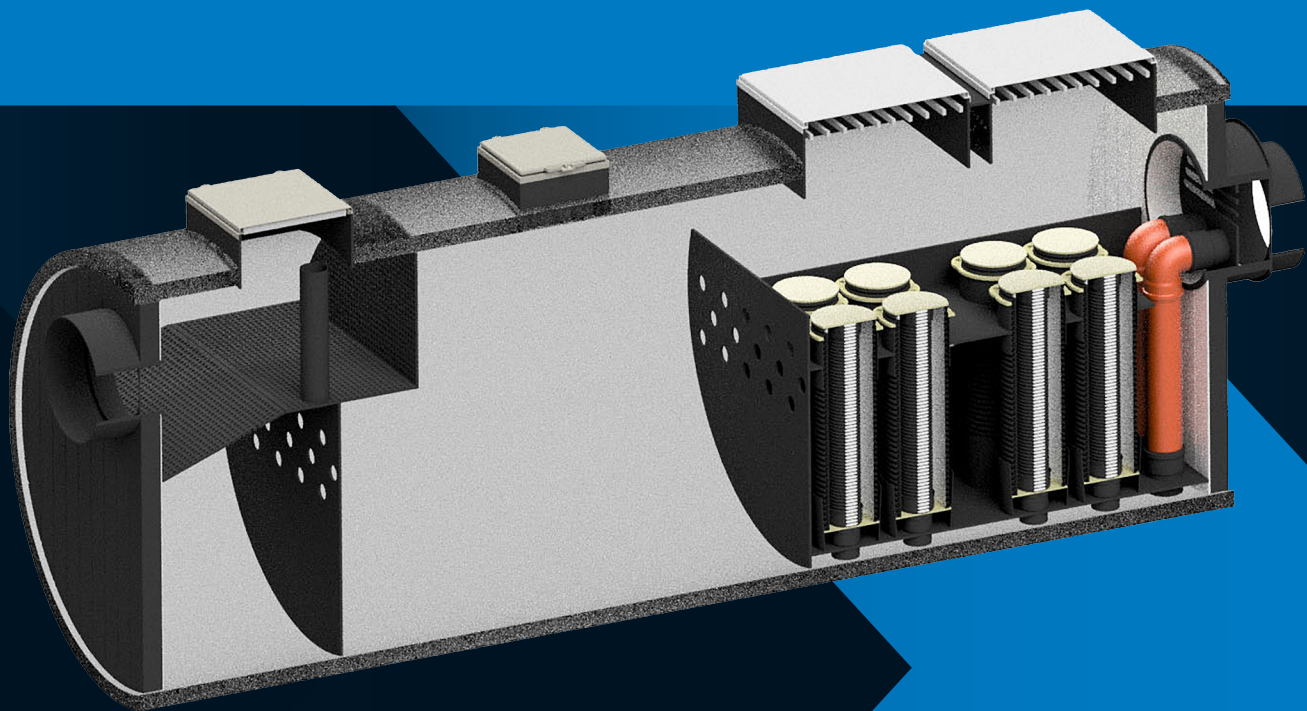
- Uponor Infrastructure Solutions – Technical Handbook



## 11. Appendix

# Uponor Vault Maintenance Manual

uponor

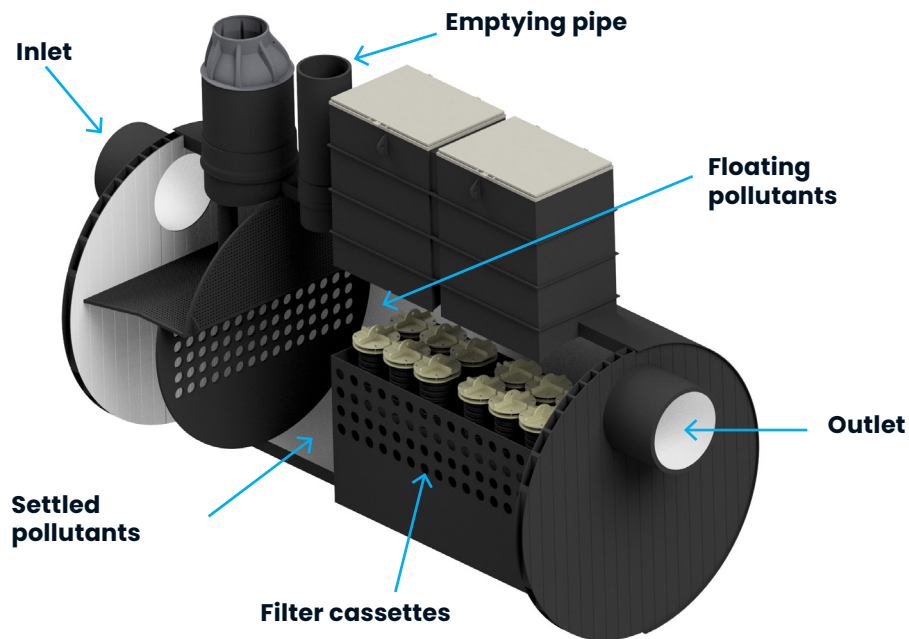




# Maintenance Manual

Uponor Vault is a filter chamber for stormwater treatment from coated catchment areas up to 20 ha in size. The size range extends to connections up to Ø 1,200mm. Uponor Vault can also fit in narrow spaces, such as under traffic, parking, or

green areas. The treatment involves three stages: 1) coarse separation using a grid, 2) separation of solids, and finally 3) filtration of minor impurities and metal ions.



## Check

- › Inspect the device visually after heavy rains.

## Emptying

- › Large contaminants are removed from the chamber.
- › The settling sludge accumulates at the bottom of the chamber and is removed through the emptying pipe or the manholes.

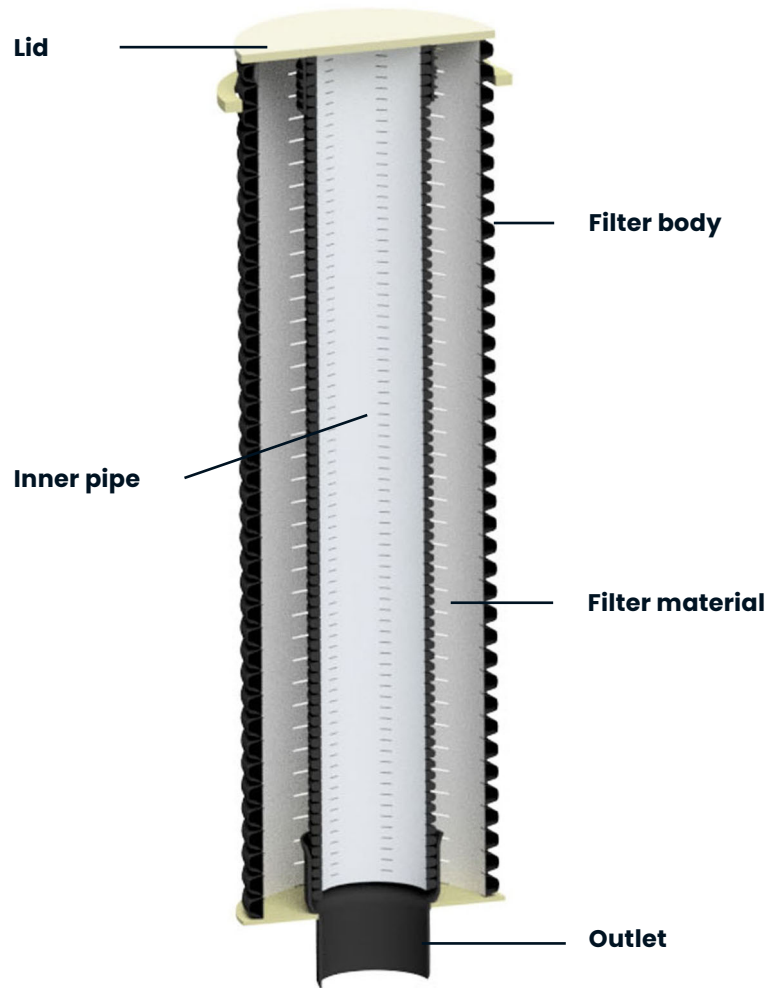
## Maintenance

- › The device is normally dimensioned to be emptied of sludge once a year.
- › The need for the removal of debris and floating pollutants is visually checked.
- › The filter change interval is from 3 to 5 years. The length of the replacement interval is determined by sampling. If sampling has not been carried out, we recommend that the filter be replaced every three years.
- › The sampling is carried out from a separate sampling well located downstream of the filter chamber.
- › The need for removal of floating pollutants (e.g., oil) is visually checked. If there is an oil bilge in the chamber, it is replaced when filled, and only the top of the bilge is visible.

## Replacing the filter

- › It is recommended to change the filter every 3-5 years.
  - › The filter is lifted from the well through the manhole.
  - › Use replacement filters (replace old ones with new ones) or replace only filter materials in existing filters. In this case, the cover is removed, and the filter material is replaced with a filter.
  - › The filter material is Filtralite P™. Check the number of filters or the need for filter material in the table.
  - › Reinstall the filters. Make sure the filter is vertical and installs properly.
- › Replacing the filter can be made easier by lowering the water level in the chamber using a pump before replacing it.

DN	Filter (Pcs)	Filter Material (L)
300	2 x 1,5m	260
400	2 x 1,5m	260
500	4 x 1,5m	520
600	4 x 1,5m	520
800	6 x 1,5m	780
1000	12 x 1,5m	1560
1200	16 x 2,0m	2880



# Contact Information

## Owner

Name

---

Address

---

Installation Date

Commissioning date

---

## Designer

Name

---

Address

---

Phone

---

## Vendor

Name

---

Address

---

Phone

---

## Installer

Name

---

Address

---

Phone

---

## Supervising Authority

Name

---

Address

---

Phone

---

## Building Authority

Name

---

Address

---

Phone

---

## Environmental Authority

Name

---

Address

---

Phone

---

# Moving > Water

**uponor**

**Uponor Corporation**

Ilmalantori 4

00240 Helsinki

Finland

**T** +358 (0)20 129 211

**F** + 358 (0)20 129 2841

[www.uponor.com](http://www.uponor.com)