

4

3

2

1

F

F

E

E

D

D

C

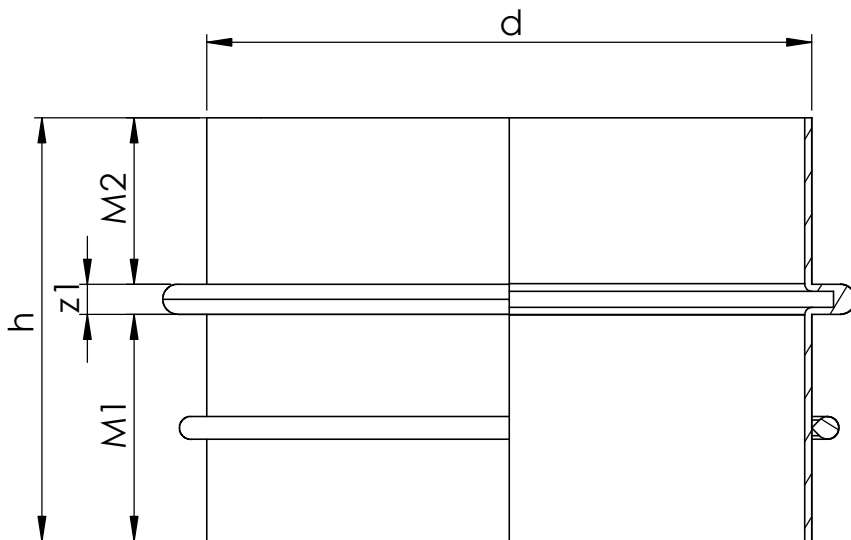
C

B

B

A

A



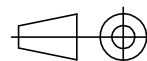
Item	Size	d	h	M1	M2	z1
1054534	400	400	280	150	110	20



Description
 INFRA
 Mounting dimensions
 Chamber components

Drawing number
 Z_Chamber_renovation_piece_h300

Sheet: 1/1



4

3

2

1