

INSTALLATION DRAWING WehoPuts 5 Wastewater treatment plant

INSTALLATION INSTRUCTIONS

1. TRENCH

Pay attention to work safety when digging the trench and leave sufficient working room around the plant. Level and mechanically compress the bottom of the trench 150mm using sand or gravel (grain size max. 60mm). Check the installation height, trench depth and ensure that the bottom of the trench is on the right level. Subsurface drains in the trench are recommended.

2. ANCHORING

Push the anchoring rods thru the holes in the bottom of the plant. Lift the plant by the lifting ears down in the trench. Press together two anchoring plates and place the assembly on top of the anchoring rod end.

3. PIPE CONNECTIONS

Connect inlet pipe (110mm) to the plant inlet nr. 1. If the inlet option nr. 2 is used drill a hole (127mm) on the inlet two height and plug the first inlet. A wallpassing gasket is required. Connect overflow pipe and discharge pipe to the plant. The recommended minimum slant of the pipes is 1%. Install ventilation pipe and signal lamp.

NOTE! Do not join the discharge and overflow pipe before the outlet place or the sampling well.

4. ELECTRICAL CONNECTIONS

Bring the buried cable from the property to the plant machine room using a cable pass-trough. The cable is to be connected to the property's distribution board and to the single-phase socket in the machine room by a qualified electrician.

230VAC, 50Hz, 10A

Cable example: MCMK 2 x 1,5 + 1,5

5. INSULATION

Insulate the treatment plant against frost. Insulation thickness min. 50 mm, width 1200mm/side. Insulate inlet, overflow and discharge sewers as well.

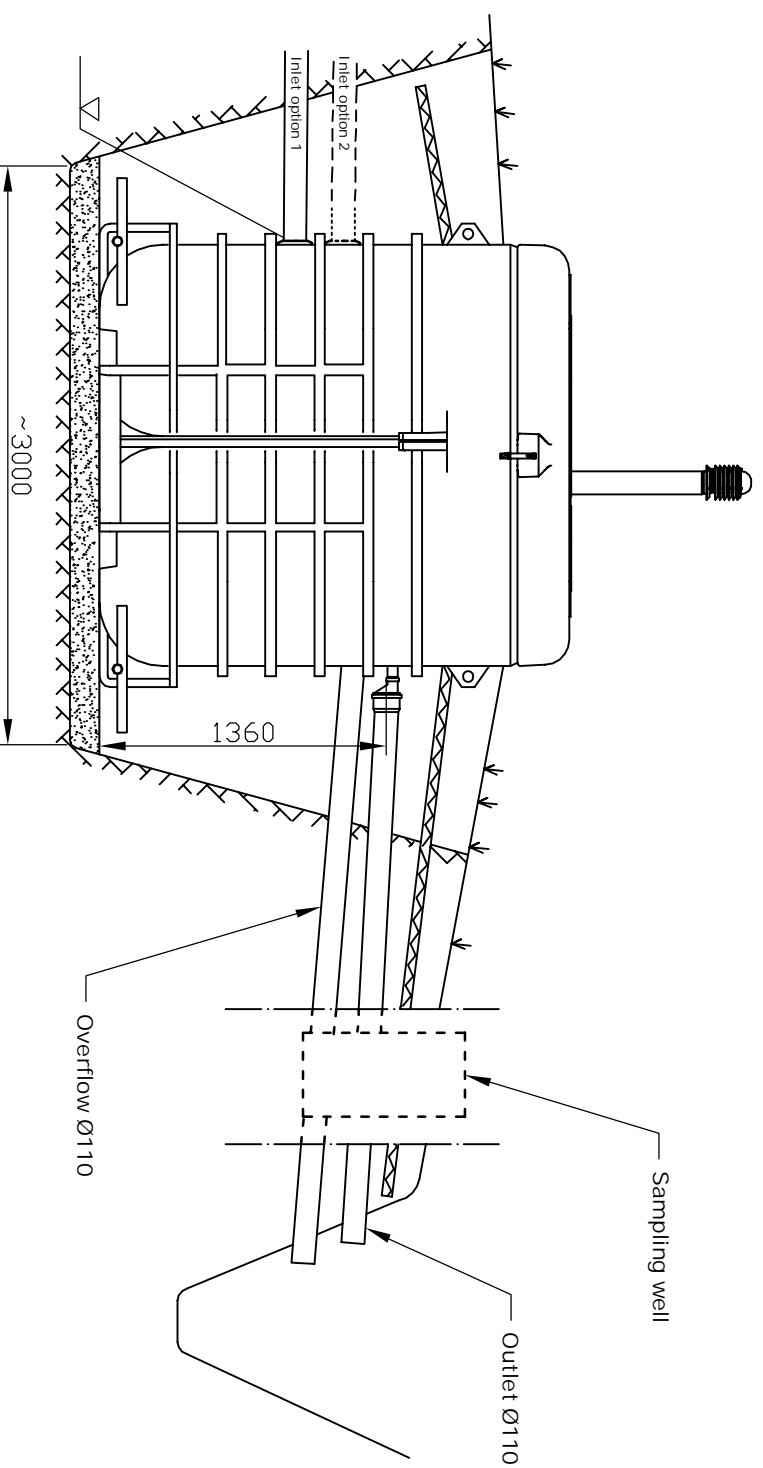
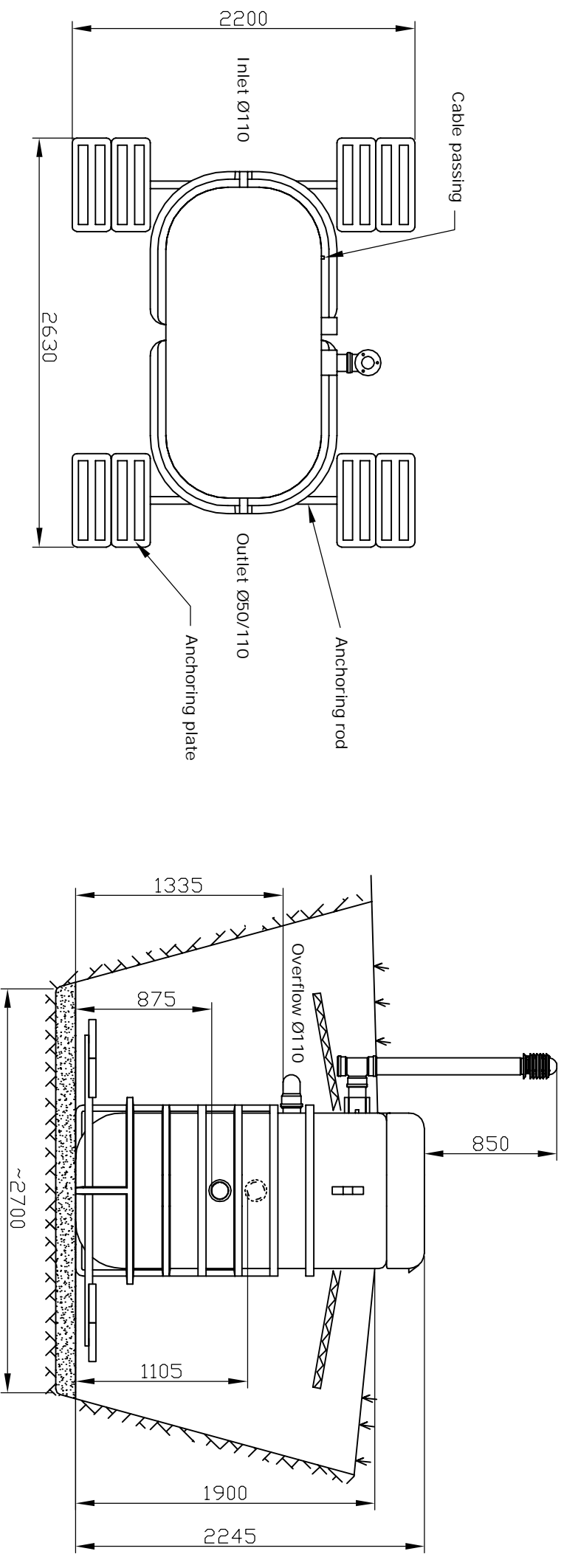
NOTE! Ensure the discharge location does not freeze!

6. BACKFILLING

The trench must be filled compressing in layers using frost-proof soil grain size max. 20mm. Shape the surface to slant away from the treatment plant.

7. STARTUP

Inspections and actions of startup are carried out according to the operation manual. Lock the treatment plant lid.



WehoPuts 5 (1066931) Wastewater treatment plant	
SYSTEM DESCRIPTION	750 l/d
Max flow	750 l/d
Dim. water volume: l/d
Number of persons:.....	pe
<input type="checkbox"/> Frost insulation	
DISCHARGE	
EXTRA EQUIPMENT	
<input type="checkbox"/> GSM-communication	
<input type="checkbox"/> Sampling well	
<input type="checkbox"/>	

uponor

We reserve the right to changes.

City/Village	Block/Yard	Lot/Rno.	Notes from administrative authority
Construction act			Drawing type
Construction site: name and address			Qualifies
Designer: name, date and signature			Scale
			Modification