

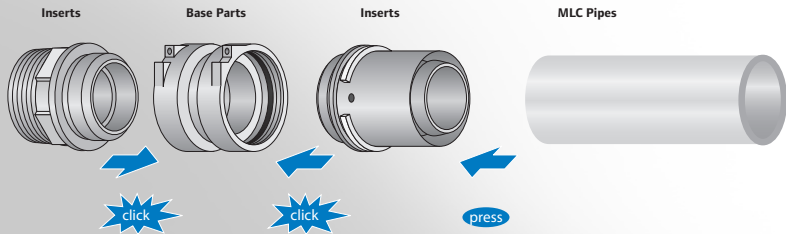
Uponor

MONTAGEANLEITUNG

MOUNTING-INSTRUCTIONS

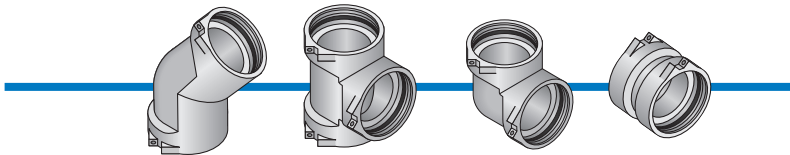
Uponor Riser System MLC 63 – 110 mm

GB Uponor Riser System MLC 63 – 110 mm

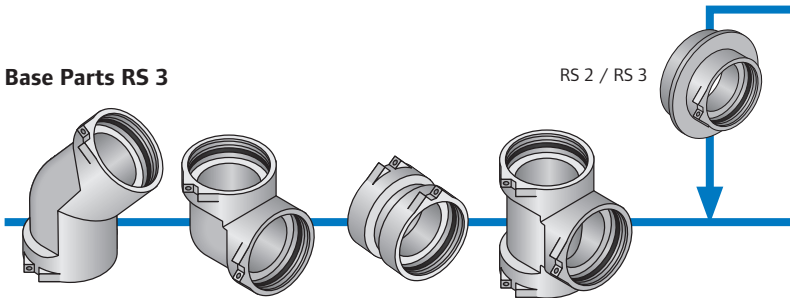


Uponor Riser System

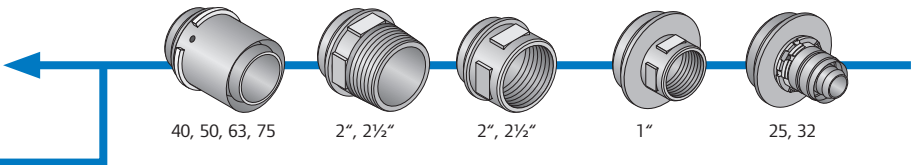
Base Parts RS 2



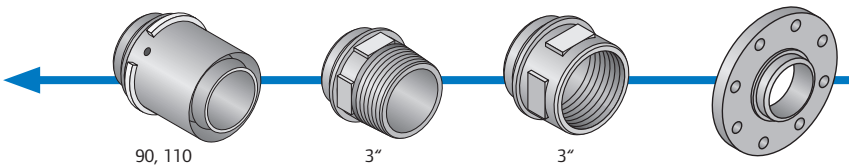
Base Parts RS 3



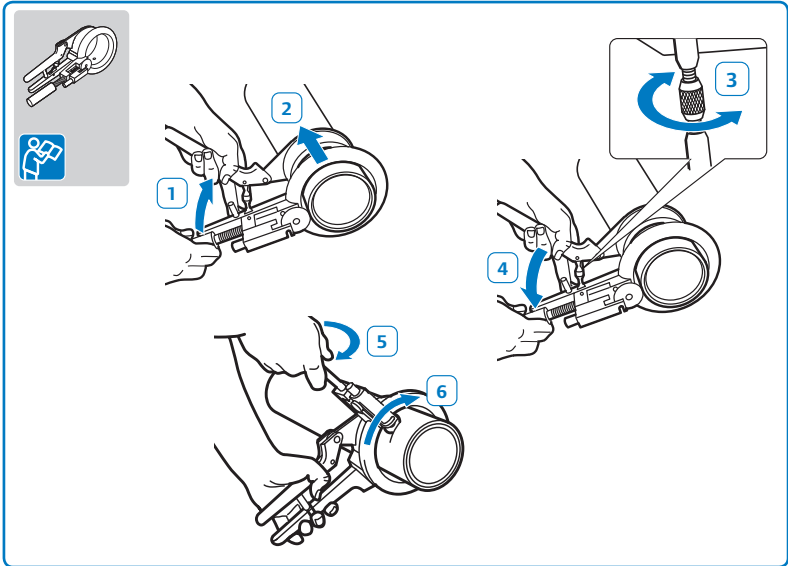
Inserts RS 2



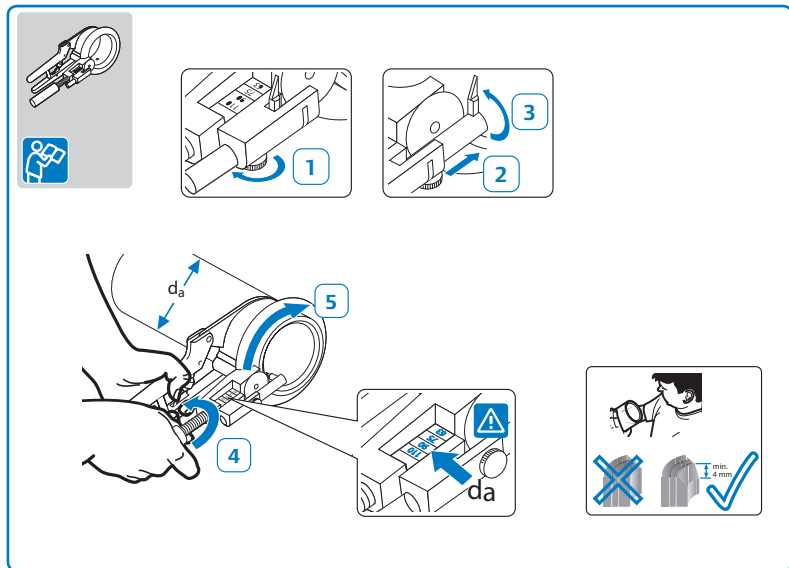
Inserts RS 3



1. Ablängen · Cutting

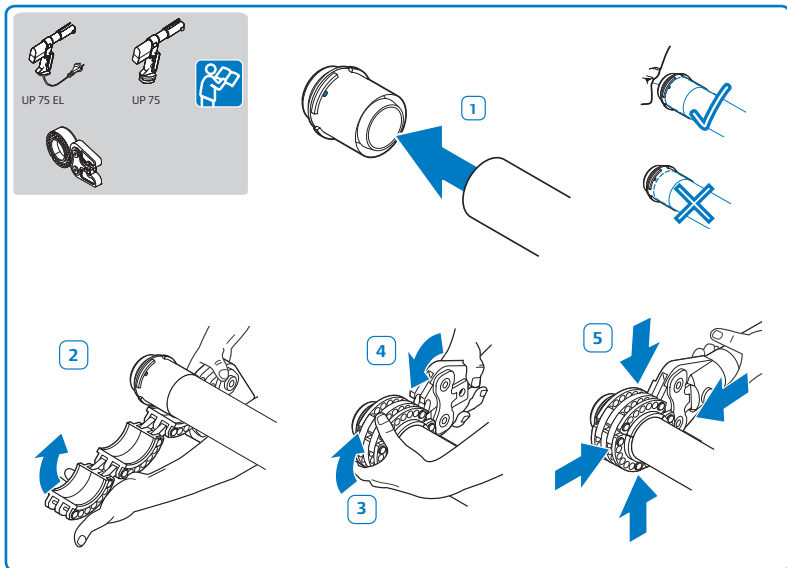


2. Entgraten · Beveling

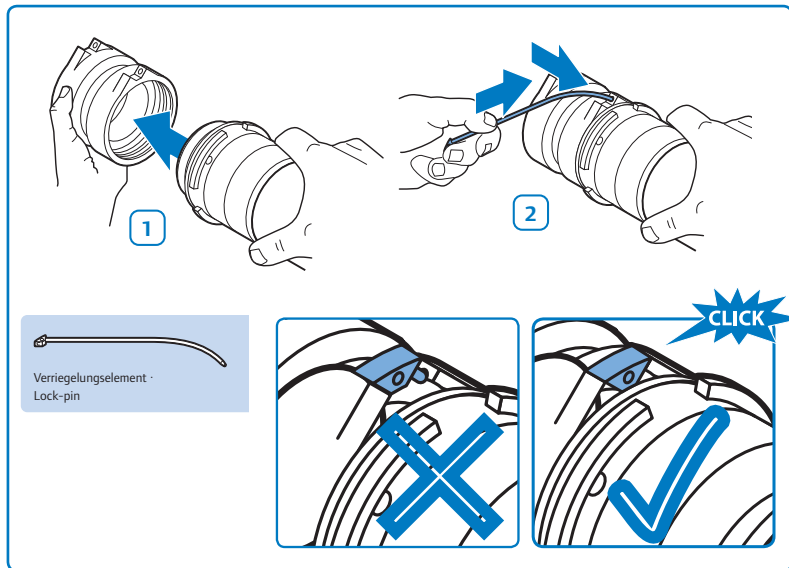


3. Rohr in Pressadapter einstecken und verpressen

Insert pipe into press adapter and press



4. Pressadapter in Grundkörper einstecken und mit Verriegelungselement arretieren · Insert press adapter into base part and lock with lock-pin

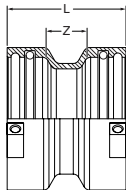


Uponor Riser System Base Parts

Uponor RS Kupplung/Coupling

aus Messing verzinkt
als Basisteil, inklusive
2 Verriegelungs-
elemente

Made of tin-plated
brass. As RS base
part, including 2 lock
pins.

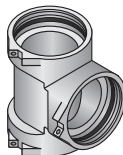
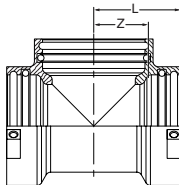


Type	Art.-No.	Z [mm]	L [mm]	St./pce. [g]
RS 2	1029144	18	51	356
RS 3	1029145	18	51	561

Uponor RS T-Stück/Tee

aus Messing verzinkt
als Basisteil, inklusive
3 Verriegelungs-
elemente.

Made of tin-plated
brass. As RS base
part, including 3 lock
pins.



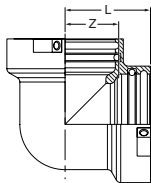
Type	Art.-No.	Z [mm]	L [mm]	St./pce. [g]
RS 2	1029142	31	51	738
RS 3	1029143	48	68	1566

Uponor Riser System Base Parts

Uponor RS Winkel/Elbow 90°

aus Messing verzinkt
als Basisteil, inklusive
2 Verriegelungs-
elemente.

Made of tin-plated
brass. As RS base
part, including 2 lock
pins.

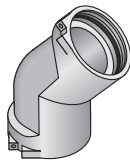
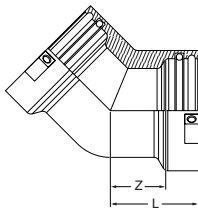


Type	Art.-No.	Z [mm]	L [mm]	St./pce. [g]
RS 2	1029138	31	51	544
RS 3	1029139	48	68	1174

Uponor RS Winkel/Elbow 45°

aus Messing verzinkt
als Basisteil, inklusive
2 Verriegelungs-
elemente.

Made of tin-plated
brass. As RS base
part, including 2 lock
pins.



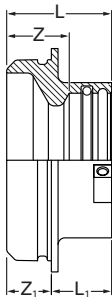
Type	Art.-No.	Z [mm]	L [mm]	St./pce. [g]
RS 2	1029140	31	51	682
RS 3	1029141	48	68	1509

Uponor Riser System Base Parts

Uponor RS Kupplung, reduziert/Coupling reducer

aus Messing verzinkt,
als Übergang von
RS 3 auf RS 2, inklu-
sive 1 Verriegelungs-
element.

Made of tin-plated
brass as reducer from
RS 3 to RS 2 includ-
ing 1 lock pin.



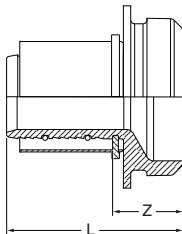
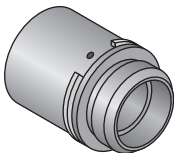
Type	Art.-No.	Z	Z1	L	L1	St./pce. [g]
RS 3 / RS 2	1029146	27	20	47	27	691

Uponor Riser System Inserts

Uponor RS Pressadapter/ Press adaptor 40-110 MLC

aus Messing verzinkt, Presshülse aus Edelstahl, fixiert. Mit Anschlagsegment als Pressbackenanschlag. Passend zu allen RS 2/RS 3 Basisteilen.

Made of tin-plated brass, press sleeve made of stainless steel fixed with stop ring segment as stop ring segment as stop for pressing jaw. Fits to the RS 2 / RS 3 base parts.



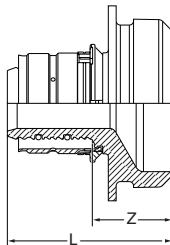
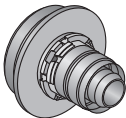
Type	Art.-No.	Z [mm]	L [mm]	St./pce. [g]
RS 2/40	1029123	27	67	386
RS 2/50	1029124	27	67	394
RS 2/63	1029125	27	91	613
RS 2/75	1029126	27	91	788
RS 3/90	1029127	31	100	1116
RS 3/110	1029128	31	100	1719

Uponor Riser System Inserts

Uponor RS Pressadapter/ Press adaptor 25-32 MLC

aus Messing verzinkt, Presshülse aus Edelstahl, fixiert. Mit Anschlagsegment als Pressbackenanschlag. Passend zu allen RS 2 Basisteilen.

Made of tin-plated brass, press sleeve fixed with stop ring segment as stop for pressing jaw. Fits to all RS 2 base parts.



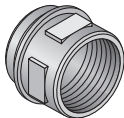
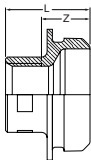
Type	Art.-No.	Z [mm]	L [mm]	St./pce. [g]
RS 2/25	1029121	29	59	350
RS 2/32	1029122	29	59	364

Uponor Riser System Inserts

Uponor RS Gewintheadapter IG/ Thread adaptor FT

aus Messing verzinkt,
Innengewinde nach
DIN EN 10226-1.
Passend zu allen RS 2
Basisteilen.

Made of tin-plated
brass. Fits to all
RS 2/RS 3 base parts.
Cylindrical female
thread acc. to DIN EN
10 226-1.

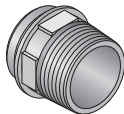
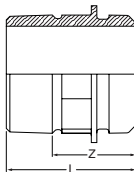


Type	Art.-No.	Z [mm]	L [mm]	St./pce. [g]
RS 2/Rp 1	1029134	26	45	329
RS 2/Rp 2	1029135	28	54	508
RS 2/Rp 2½	1029136	32	63	607
RS 3/Rp 3	1029137	32	65	827

Uponor RS Gewintheadapter AG/ Thread adaptor MT

aus Messing verzinkt,
Außengewinde nach
DIN EN 10226-1.
Passend zu allen RS 2
Basisteilen.

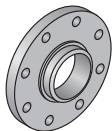
Made of tin-plated
brass. Fits to all
RS 2/RS 3 base parts.
Male thread acc. to
DIN EN 10 226-1 for
sealing in.



Type	Art.-No.	Z [mm]	L [mm]	St./pce. [g]
RS 2/R 2	1029131	43	66	511
RS 2/R 2½	1029132	37	64	578
RS 3/R 3	1029133	43	73	881

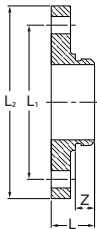
Uponor Riser System Inserts

Uponor RS Flansch/Flange



aus Messing verzinkt,
PN 16, Lochkreis
mit 8 Löchern.
Passend zu allen RS 3
Basisteilen.

Made of tin-plated
brass, PN 16. Fits to
all RS 3 base parts.
Bolt circle with
8 holes.



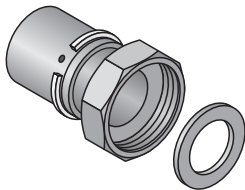
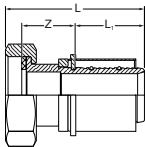
Type	Art.-No.	Z	L	L1	L2	St./ pce. [g]
RS 3/DN 80	1029129	20	45	160	200	4478
RS 3/DN 100	1029130	20	44	180	220	5223

Uponor Riser System Inserts

Uponor RS Pressverschraubung MLC mit Innengewinde Uponor Press-connection MLC 63-G2 3/8

aus Messing verzinkt, Presshülse aus Edelstahl, fixiert, mit Anschlagsegment als Pressbackenanschlag und Flachdichtung. Lösbare Verschraubung zum Anschluss Aufputz an Armaturen, Filter und Absperrventile. Gewinde nach DIN EN 10226-1.

Made of tin-plated brass, with fixed press sleeve and flat seal. Releasable screw connector for connection to on-wall fittings, filters and shut-off valves. Thread acc. to DIN EN ISO 228-1.



Type	Art.-No.	Z	L	L1	St./pce. [g]
63 x G 2 3/8	1029147	36	113	64	976

Uponor GmbH

Industriestrasse 56

97437 Hassfurt

Germany

T +49 (0)9521 690-0

F +49 (0)9521 690-830

W www.installationssysteme.uponor.de

E installationssysteme@uponor.de

uponor