

# Energy-efficient modernisation

Energy-efficient and sustainable solutions  
for modernisation projects



# ➤ Uponor is your expert renovation partner

## **More comfort, less costs – with solutions from Uponor**

Home owners, the owners of public and commercial buildings, architects, planners and landlords alike are becoming increasingly aware of the impact of construction measures on the environment. They feel the need to start using energy-efficient solutions.

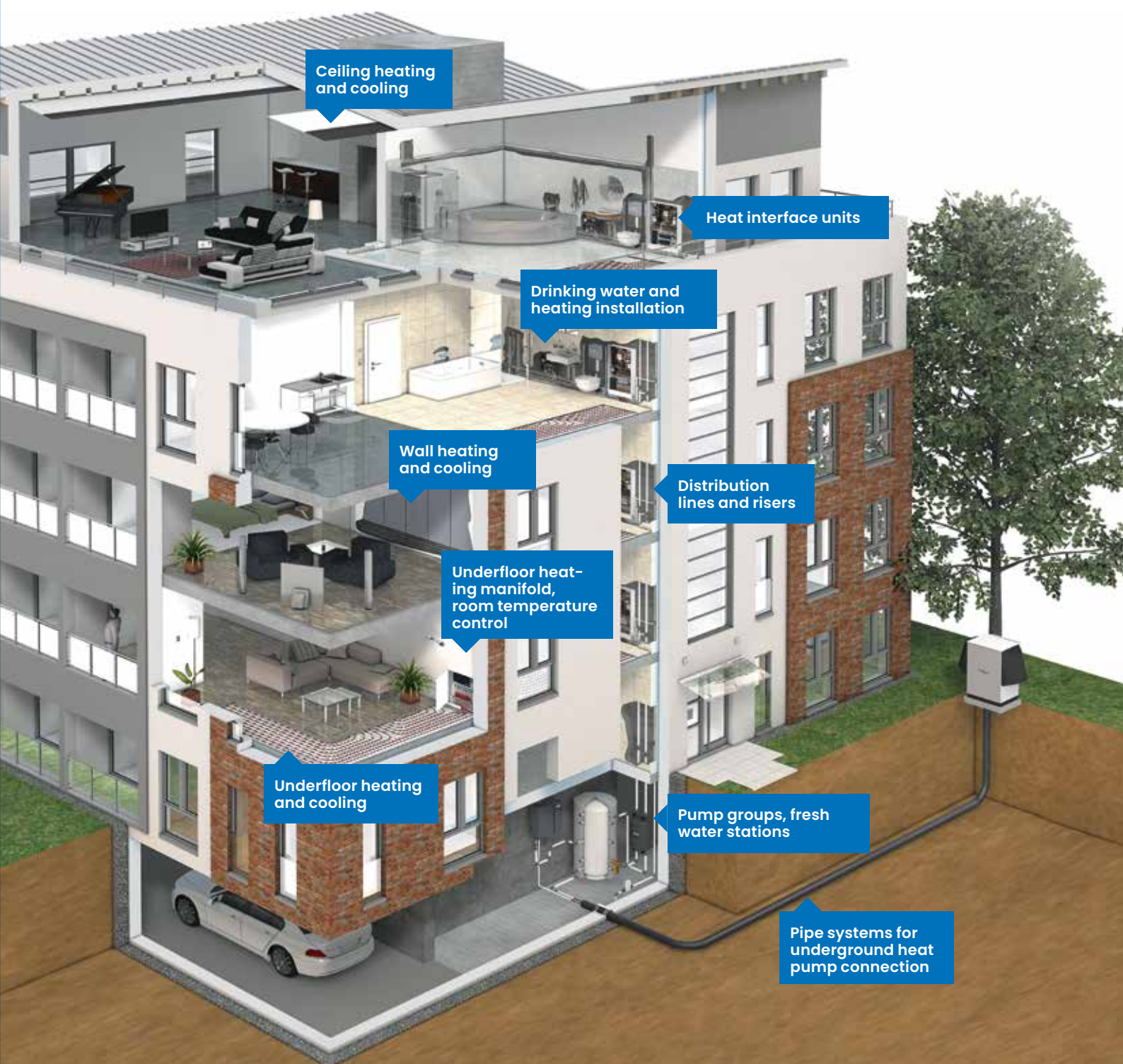
Uponor systems meet your customers' requirements for the energy-specific renovation of existing buildings.

Moreover, our systems save energy costs and improve living comfort.

# Every renovation project has its own requirements

## We have the right solutions

Uponor offers the perfect systems for energy-specific retrofitting in any type of building, from small apartments to single-family homes and multi-storey apartment buildings, as well as for public or commercial buildings.





# Energy efficient heating and cooling via floor, wall or ceiling

The radiant heating/cooling system is invisibly integrated into the floor, wall or ceiling of the building. Due to the effective transfer of heat over a large area, significantly lower supply temperatures are required than with conventional heat transfer systems.



**Replacing radiators with radiant heating effectively reduces the energy consumption of an existing building if the heating system is also combined with a heat pump or other renewable energy source installation.**

## Heating and cooling via floor surfaces

Whether systems with minimal structure height and installation on existing floor coverings or lightweight constructions for wooden joist ceilings – Uponor has a perfect solution for almost any requirements.

# Improve room comfort save energy and costs

Radiant heating with a low supply temperature delivers pleasant room comfort and well-being and ensures savings in terms of energy and costs.



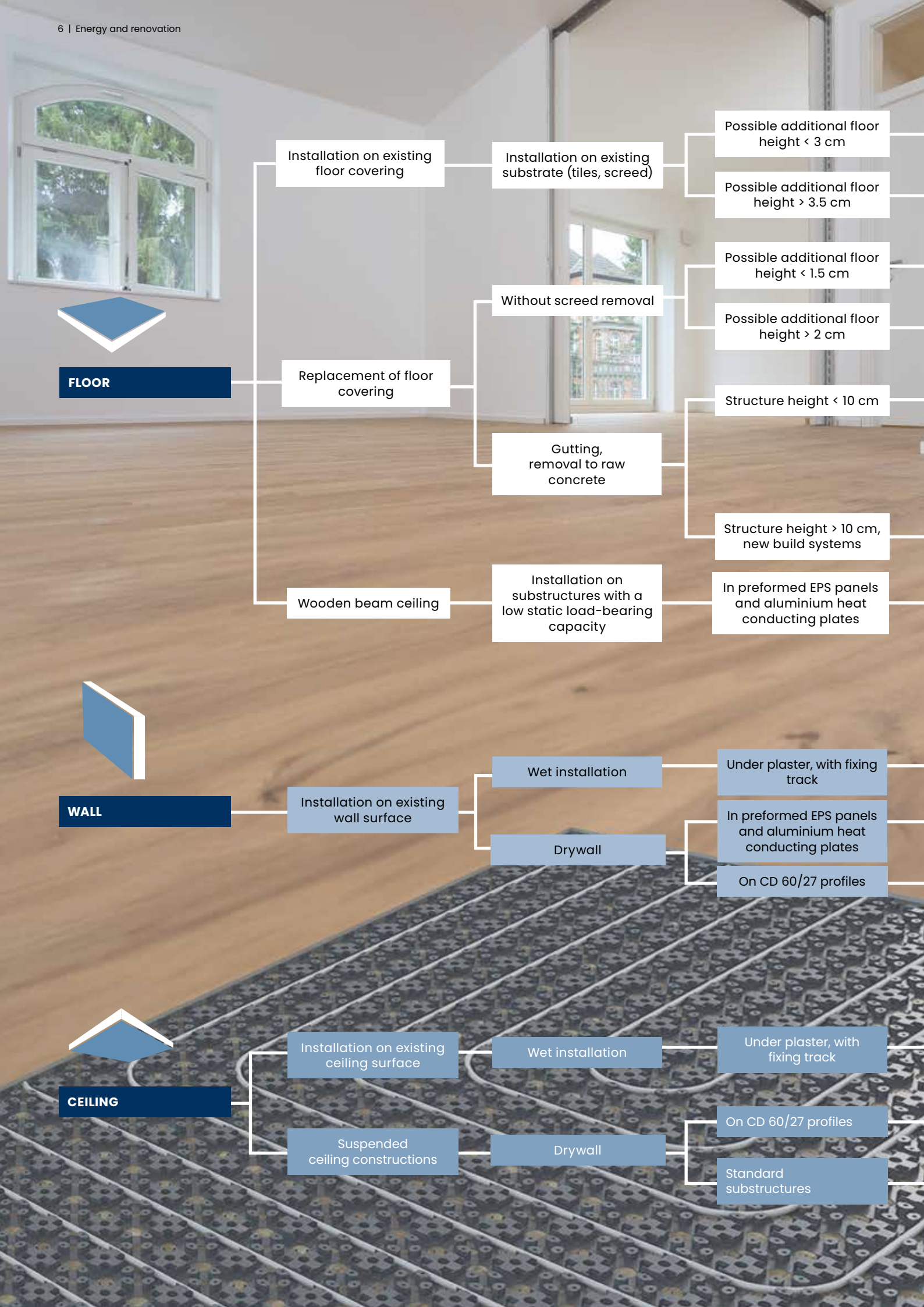
## Walls as heating surfaces

Whether as a lightweight drywall system or using wet plaster methods, the Uponor systems for wall heating ensure an all-round pleasant indoor climate throughout the year.

## Radiant cooling/heating via ceiling

Uponor offers a variety of solutions depending on the property and the cooling and heating requirements of the building.





A) **Uponor Minitec** with Knauf N430  
 B) **Uponor Siccus Mini** (tiles)  
**Uponor Siccus 16** (parquet)

**Uponor Minitec** with Knauf N440

A) **Uponor Minitec** with Knauf N430  
 B) **Siccus Mini** (parquet and laminate)

A) **Uponor Minitec** with Knauf N440  
**Uponor Siccus Mini** (tiles)  
 B) **Uponor Siccus 16** (parquet and laminate)

**Uponor Minitec**  
**Uponor Klett Twinbord**  
 both with woodfibre or TP GP 12-1

**Uponor Klettsystem**

**Uponor Siccus Mini**  
**Uponor Siccus 14 und 16**  
 each with a dry screed panel  
 – for all surfaces

**Uponor Fix**

**Uponor Siccus Wall**

**Uponor Renovis**

**Uponor Fix**

**Uponor Renovis**

**Uponor Thermatop M**

# System finder for radiant heating and cooling in renovation projects

## ➤ Selecting the appropriate radiant heating system for a building renovation depends on numerous factors, including:

- Size of the useful heating surface
- Structural considerations like the static load capacity
- Specified structure heights
- Historical preservation requirements

## ➤ Retrofitting can be performed on a room-by-room basis or throughout the whole building

- Installation on existing floor coverings is possible
- In some cases it is possible to keep the existing screed
- Uponor low-profile systems are ultra-thin, making them ideal for retrofitting existing buildings with underfloor heating

## ➤ Uponor systems are also suitable for installation in wooden joist ceilings or timber frame buildings

- Uponor drywall systems are lightweight, quick to install and can be walked on immediately after installation



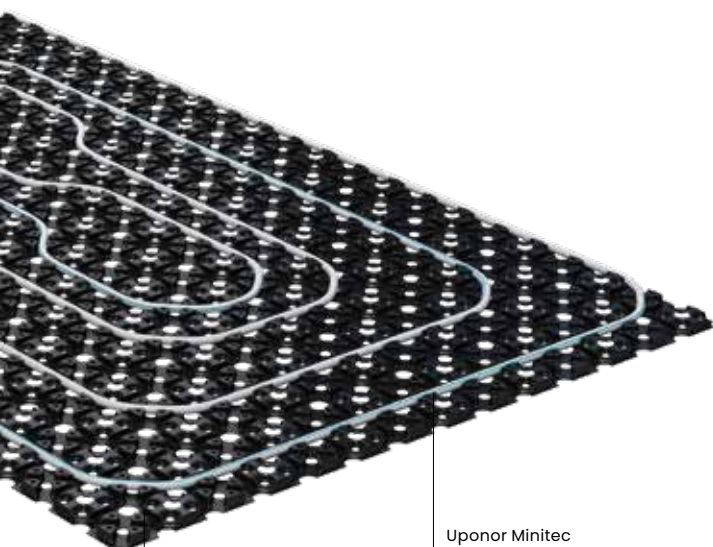
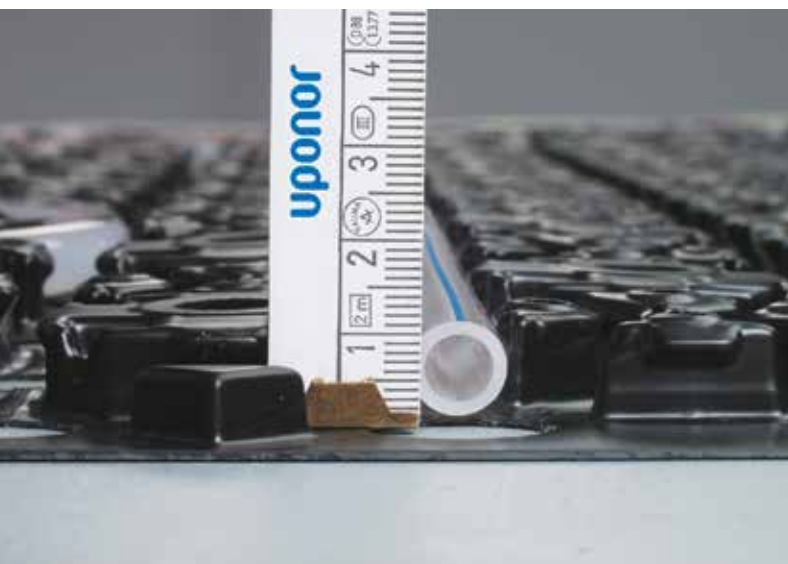
**Consult Uponor technical expert  
about the best solutions for  
your individual project.**



## Uponor Minitec

# Can be installed on almost all existing floors due to the structure height of only 15 mm

With a minimum structure height of just 15 mm, the Uponor Minitec low-profile system is the perfect solution for retrofitting underfloor heating. After all, when laying underfloor heating over an existing subsurface, every millimetre in height counts.



Uponor Minitec  
Comfort Pipe 9.9 mm  
heating pipes

Uponor Minitec  
Self-adhesive  
sheeting element

### The perfect solution for underfloor heating where every millimetre of structure height counts

- Low floor construction
- Direct installation possible on existing floor covering



FLOOR



WET INSTALLATION



15

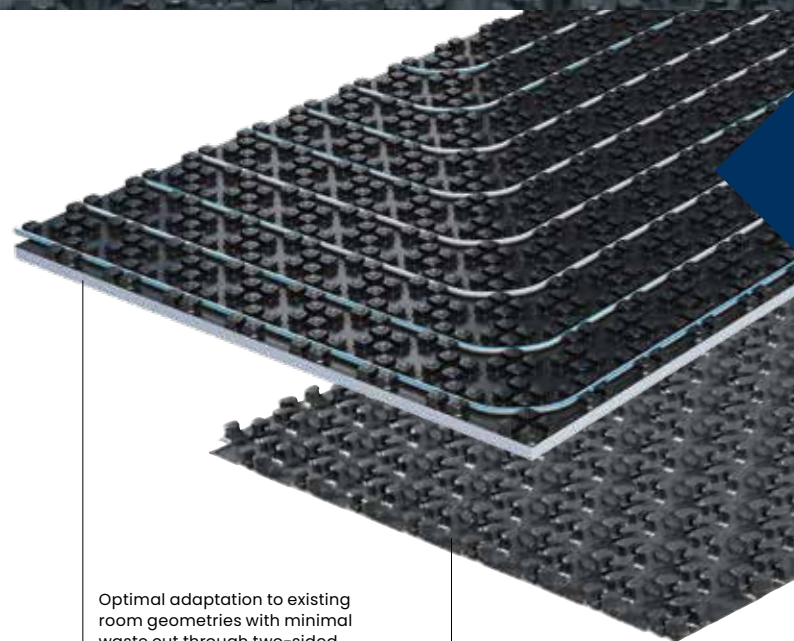
MM



# Uponor Nubos

## Nub foil for installation on existing insulation

Uponor Nubos nub panels are installed in the floor construction, under a load distribution layer of cement or anhydrite based screed and are available in three versions (ND 30-2, ND 11 and nub foil without insulation) for different floor constructions and loads.



### Optimally matched components

- Optionally available as back-foamed EPS insulation in 30 mm or 11 mm
- As nub foil for installation on existing insulation

Optimal adaptation to existing room geometries with minimal waste cut through two-sided overlapping edge structure as a separate one

Uponor Nubos nub foil without back-foaming for installation on existing insulation



FLOOR



WET INSTALLATION



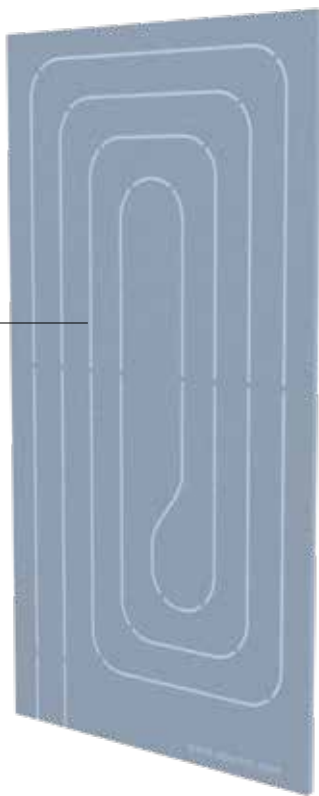
30

MM

# Uponor Renovis

## Drywall system – modular and energy efficient

Uponor Renovis consists of gypsum plasterboards in which Uponor PE-Xa pipes are factory preinstalled. Optimal heating and cooling of rooms via walls or ceilings in drywall applications.



Fibre-reinforced gypsum plasterboard 15 mm, installation on defined drywall substructures

### Ready-to-connect gypsum plasterboard with integrated pipe register

- Heating surface and new wall/ceiling surface in one
- For wall and ceiling installation
- Mounting on commercially available 60 x 27 mm CD profiles, optionally with a factory-installed insulation layer



WALL



CEILING



DRYWALL



MM

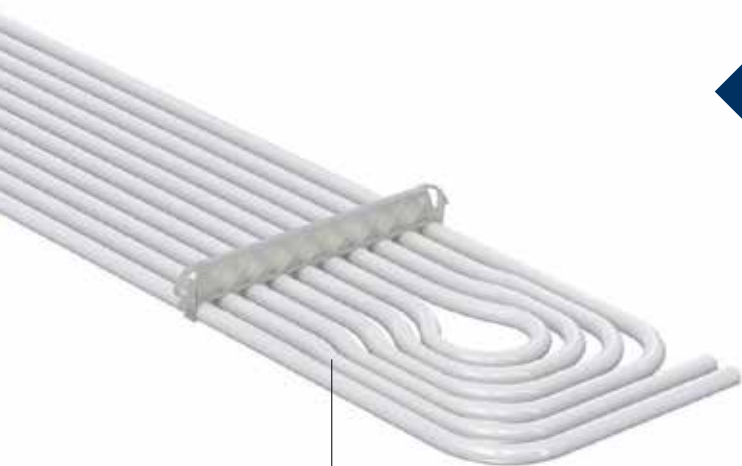
15



# Uponor Thermatop M

## Seamless gypsum plasterboard system for cooling and heating ceilings

The system is based on the diffusion-resistant Uponor composite pipes and comprises standardised modules that can be installed quickly in conventional ceiling substructures without additional tools thanks to a click-in design.



High heating and cooling capacities through large, thermally active pipe surface and good contact with gypsum plasterboard

### Freely plannable ceiling height, simple click-in installation

- Quick and tool-free installation of the standardised registers by clicking the fixing rails into the commercially available CD profiles of the ceiling substructure.
- Clear separation of trades between drywall installation and building automation systems
- Panelling with commercially available gypsum plasterboards
- Simple integration of installed parts possible



CEILING



DRYWALL



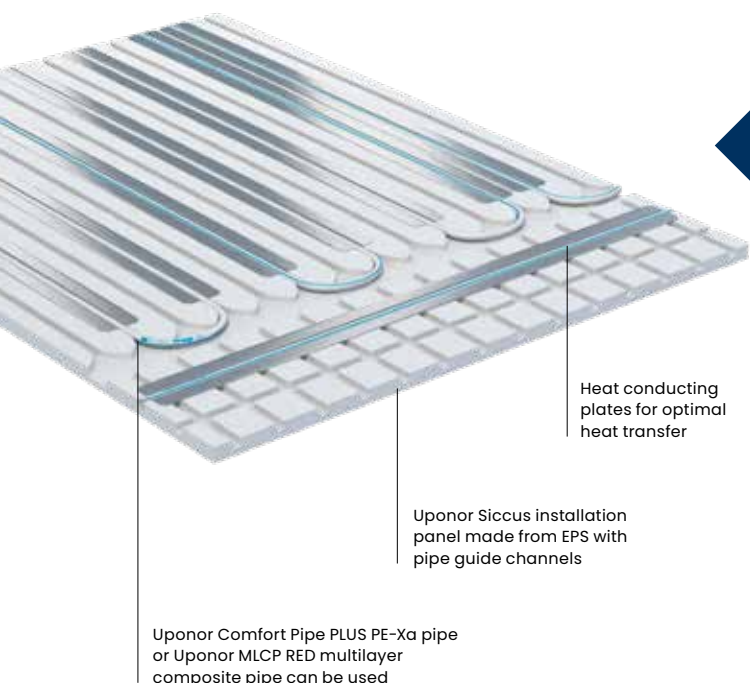
MM

15

# Uponor Siccus

## Lightweight solutions for versatile applications

With dry screed boards as load distribution layer, the system weight is only approx. 25 kg/m<sup>2</sup>. This is particularly advantageous when used on wooden joist ceilings with low static load-bearing capacity.



### Lightweight drywall system for installations with a low static load-bearing capacity

- Ideal for wooden joist ceilings with a low static load-bearing capacity, e.g. in old-building renovations
- System weight only approx. 25 kg/m<sup>2</sup>
- Short installation time; can be walked on immediately due to dry screed
- Suitable for all common floor coverings

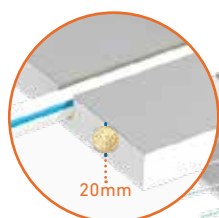




# Uponor Siccus 16 and Uponor Siccus Mini

## Lower than ever – for the fastest comfort

The thinnest generation of radiant underfloor heating and cooling with only 15 mm height. For renovation in older residential buildings, low-height constructions can make or break a deal during the change to an underfloor heating and cooling system.



**Uponor Siccus 16**  
Only 28–36 mm system height, fits  
perfect in modernisation projects



**Uponor Siccus Mini**  
XPS panel with full-face heat  
transfer layer of Aluminium with  
integrated pipe grooves for use  
with Comfort Pipe 9.9 mm.

### Uponor Siccus 16 – Can be tiled directly

- Laminate, wood and tile flooring can be laid directly on Uponor Siccus 16
  - Wood/laminate laid floating
  - Tiles bonded

The system is optimised for bonding tiles. With a dry screed board as a distribution layer, all floor coverings can be used.

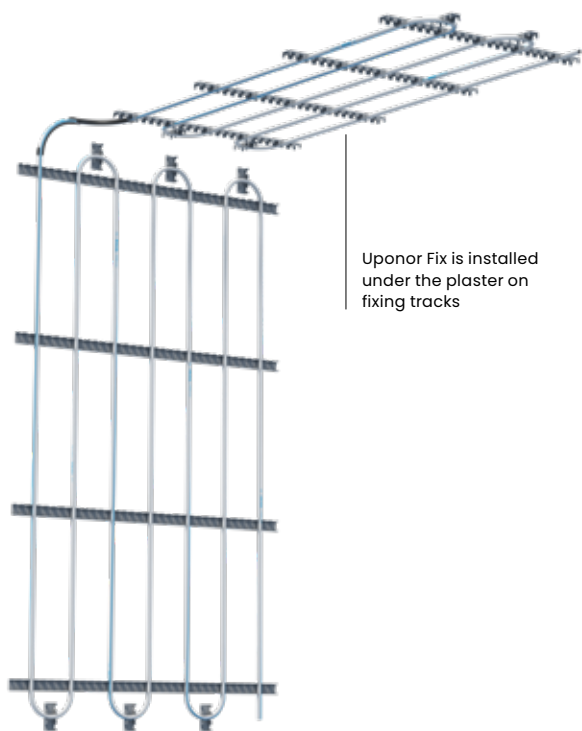
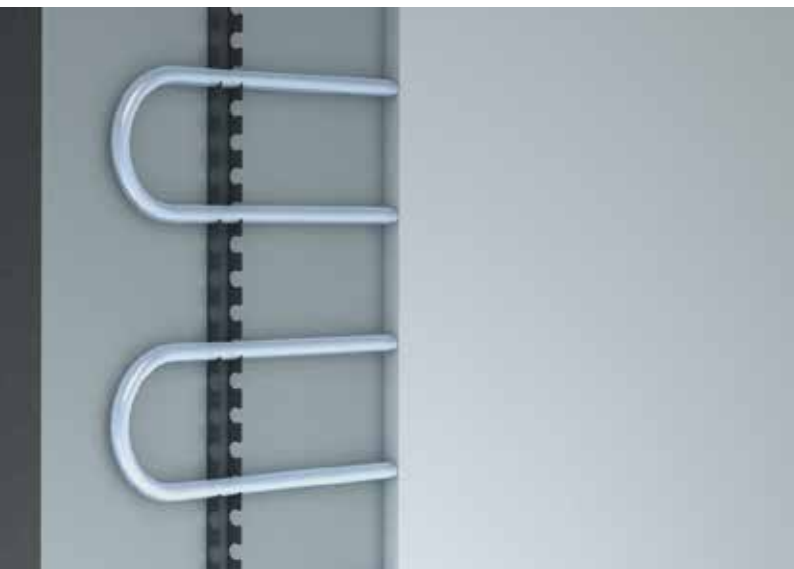
### Uponor Siccus Mini – our thinnest generation of radiant underfloor heating

- Close-to-flooring construction of UFH is energy efficient.
- Heat-up is fast – 90% of heating power in less than 1 hour.
- Support convenience as position of existing interior as door handles, light switches etc. stays nearly at the same.

# Uponor Fix

## Universal under-plaster ceiling and wall heating

Universal system for ceiling and wall installation with few, optimally matched system components.



### Ceiling and wall solutions can also be combined for individual requirements

- One system for wall and ceiling – can be installed as stand-alone wall heating or in conjunction with ceiling heating
- Can also be used with clay plaster, perfect as a radiant heating system in diffusion-open walls
- Ideal for heating support where the floor area is too small, e.g. in stairwells



WALL



CEILING



WET  
INSTALLATION



MM

32



# Uponor Siccus Wall

## Wall heating for fast construction progress in drywall installations

Siccus Wall is the ideal dry mortarless construction for walls used for heating and cooling. Due to its lightweight construction, it perfectly meets the requirements for renovation projects.



Less heat loss due to integrated insulation layer

Uponor Siccus heat conducting plates for optimal heat transfer

### Drywall system for wall installation – lightweight construction with low structure height

- Ideal for old-building renovations: low construction height, low weight
- One system for floor and wall – can be used as stand-alone wall heating or in conjunction with underfloor heating



WALL



DRYWALL



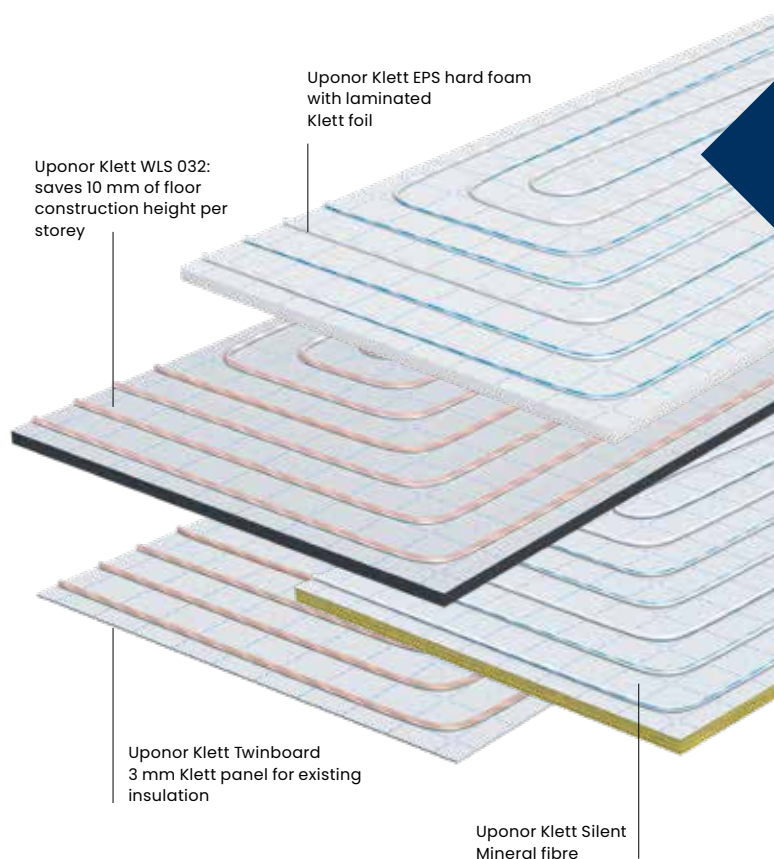
MM

50

# Uponor Klett

## Fast and innovative fixation technology

Uponor Klett is incredibly fast and easy to install. Even in confined areas like under roof slopes, at the flap tile or under stair landings, the desired pipe installation is easily achieved with Uponor Klett.



### Adapts flexibly to the geometry of any room

- Fast installation by a single person without special tools
- Easy installation, even in irregularly shaped rooms
- Simple position correction of previously installed pipes
- Wide range of installation panels
- Attachment on existing insulation with Klett Twinboard



FLOOR



WET INSTALLATION



MM

74

# Uponor Tacker

## Most efficient and robust

Uponor Tacker system are designed to perfectly match each other. The panels with thermal and step sound insulation are equipped with tear-proof surface and printed installation grid. They enable easy installation of system pipes. All components are designed to ensure optimum safety and reliable operation.



Flexible: composite panels or rolls, different thermal & step sound insulation layers



Foil on the panel is printed with 100x100mm grid pattern

### Versatility due to flexible pipe layout

- Fast and flexible.
- Made for all types of screeds.
- Optimized components for fast and strong pipe fixations.
- Efficiently matched system with few components.
- Wide insulation rolls and boards portfolio with different thermal/impact sound insulation layers allow a wide variety of applications.
- For use with all Uponor PeXA, PERT and MLCP RED pipes 14, 16, 17 and 20 mm.



FLOOR



WET INSTALLATION



74

MM



# Uponor Smatrix Pulse

## Significantly more comfort and reduced energy cost

User-friendly individual room temperature controls for maximum room comfort: Easy to install and to set up in just a few steps.



Uponor Smatrix Pulse  
Interface between  
control module and  
Internet

Uponor Smatrix Wave Style  
room thermostat with room  
temperature and humidity  
measurement function for  
maximum comfort and best  
energy efficiency

Intuitive and easy-to-use  
app for setting up and  
operating the system

### Save energy and improve living comfort

- Easy to control via app or voice assistant
- Available as a radio version or for wired installation
- Suitable for heating and cooling
- Higher energy efficiency through autobalancing technology and intelligent analysis function
- Optimised supply temperature via data exchange between heat pump\* and room temperature control

\* selected manufacturers



HIGH ENERGY  
EFFICIENCY



SIMPLE  
OPERATION



EASY INSTALLATION

# Uponor Comfort Port

## Preassembled manifold cabinets – unpack, connect, done

Uponor Comfort Port manifold cabinets save valuable installation and set-up time: Prefabricated manifolds and connection sets in the distribution cabinet and complete installation and wiring of the control technology on the control terminal strip and actuators.



Configure your Uponor Comfort Port heating manifold fast and easy online

### Everything inside: prefabricated manifolds save time and money

- Factory prefabrication of complete components in the manifold cabinet
- Set-up and installation time is significantly reduced
- Simple installation of the preassembled manifold
- Easy configuration and ordering with just a few



TIME-  
SAVING  
ASSEMBLY



PLUG & PLAY

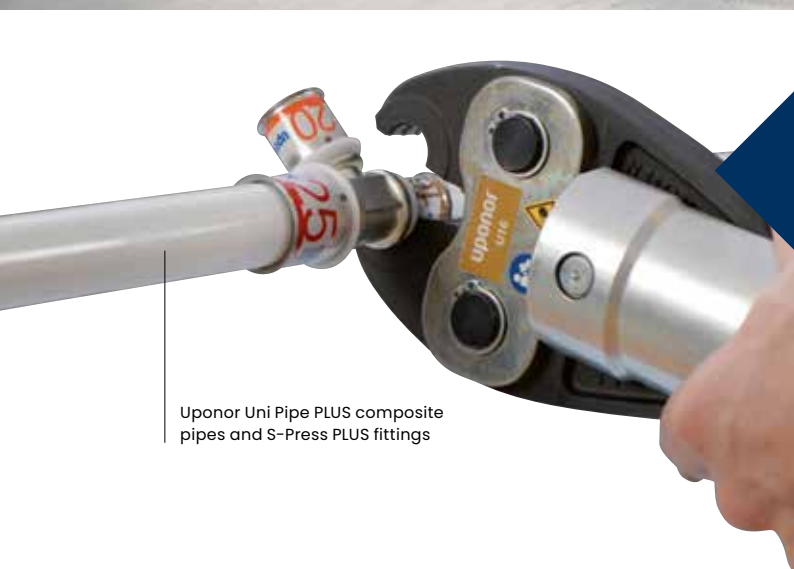


ONLINE  
CONFIGURATOR

# Uponor Uni Pipe PLUS

## New lifelines in buildings provide for fresh water

The Uponor composite pipe system enables complete drinking water installations, even for the renovation of old buildings – from the house connection to the last tapping point, new pipes made of composite pipe ensure ideal hygienic conditions.



Uponor Uni Pipe PLUS composite pipes and S-Press PLUS fittings



Numerous pre-insulated variations and pipe-in-pipe versions available

### The fastest installation system put to the test

- Wide range of pre-insulated pipes
- Flexible, bendable pipe for easy pipe routing in on-wall installations or in installation shafts
- Assembly friendly fitting design
- Pressing without deburring



FASTEST SYSTEM



SUPER EASY  
TO BEND



ONE MACHINE FOR  
ALL FITTINGS



# Uponor S-Press PLUS

## Drinking water and heating installation in old-building renovations

With their numerous features, Uponor S-Press PLUS fittings and Uni Pipe PLUS pipes ensure efficient, fast and simple work sequences during planning and installation, even in the case of difficult pipe routing and confined spaces.



Uponor Uni Pipe PLUS is much more flexible and bendable than previous multilayer composite pipes



Fittings' features of Uponor S-Press PLUS ensure efficient, fast and simple work sequences in planning and installation



Individuality is our standard: we have an Uponor solution for every application



### Everything with a single system and perfectly matched components

- Large portfolio of practical system transitions for easy connection to existing installations
- Also for heating installations
- Special fittings specifically for renovations



DRINKING WATER



HEATING

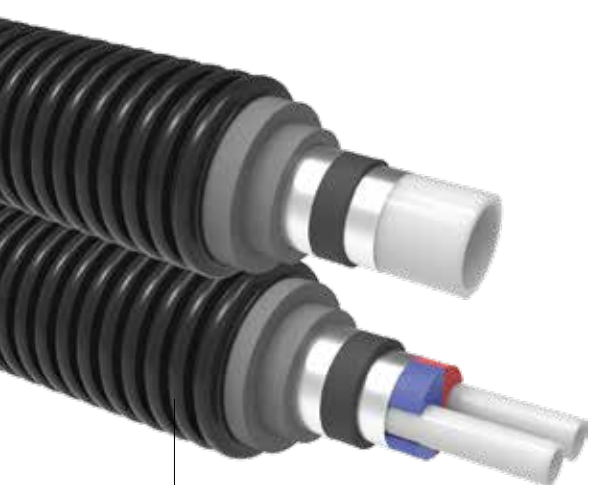
# 14-110

COMPREHENSIVE  
DELIVERY PROGRAMME

## Uponor Ecoflex

# Innovative and energy-efficient selection of pre-insulated pipes, fittings and accessories

Extensive supply networks or individual connection to a building: Hot and cold drinking water as well as heating and cooling water are transported reliably and energy-efficiently with Uponor Ecoflex.



The flexible pre-insulated Uponor Ecoflex pipe systems are highly suited for both installation between main and out-buildings as well as for extensive local heating distribution.

### Economical and energy efficient

- Higher energy efficiency with low lambda value of  $<0.004 \text{ W/mK}$  for Uponor Ecoflex VIP
- Easy installation around corners and obstacles, connection-free up to 200 m in one stretch
- Self-compensating pipe design renders installation of expansion compensators superfluous
- No special tools required for installation
- Uponor cutting service for the delivery of desired lengths directly to the building site



CUTTING  
SERVICE



48-HOUR DELIVERY  
SERVICE

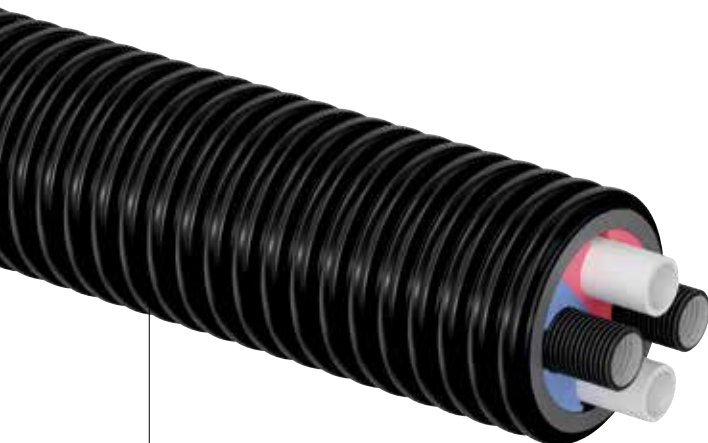


LOCAL HEAT  
DISTRIBUTION 25–125

# Uponor Ecoflex Thermo Twin HP

## The intelligent solution for heat pump connection

Uponor Ecoflex Thermo Twin HP pipes have been specially developed for heat pumps and A2B connections to implement heating supply and return, as well as power and control lines with just one system pipe.



Two PE-Xa medium pipes with oxygen barrier, SDR 11, two conduits for power or control cables, PEX foam insulation layer, robust PE-HD outer pipe

### Efficient all-in-one solution for heat pump connection

- Combines heating lines and cable conduits in one medium pipe
- Only one installation step for supply and return line as well as the necessary cable conduits
- Less excavation work and narrower trenches
- Delivery of desired lengths directly to the building site
- Practical product packages for heat pump connection available



HEAT PUMP CONNECTION  
4 IN 1 PIPE (32–63 MM)



PRACTICAL  
DELIVERY PACK



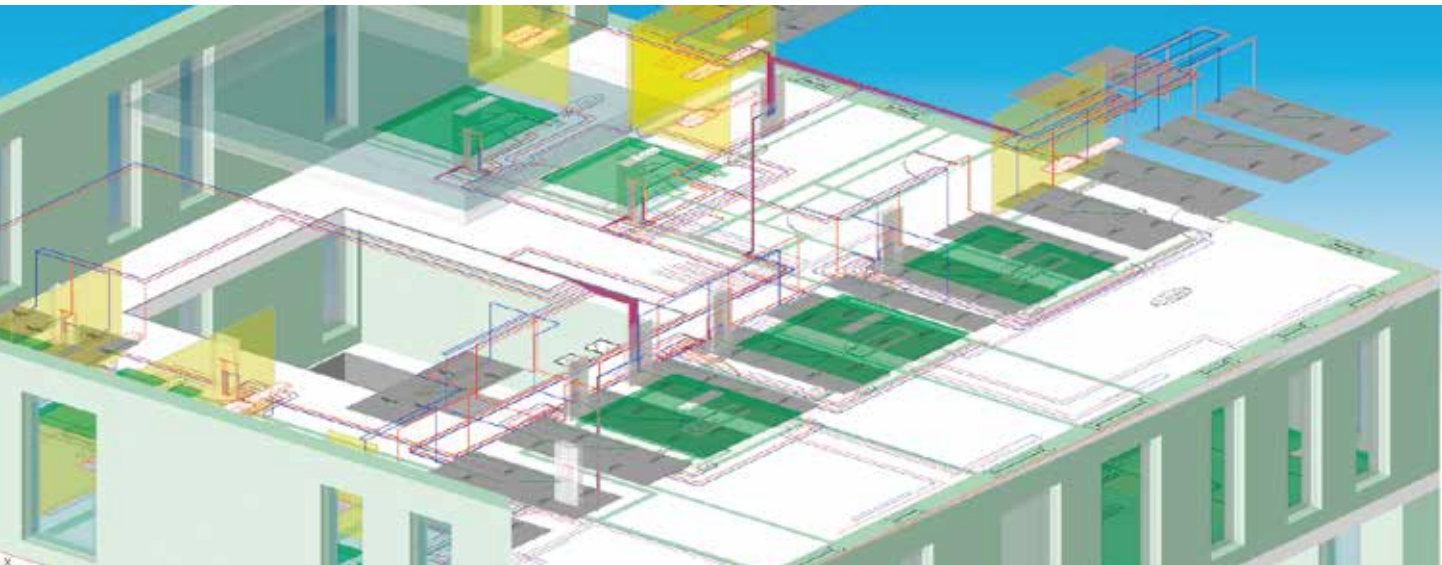
FAST  
INSTALLATION



# Uponor project planning service

## Professional planning, smooth construction process

The Uponor project planning service helps you to manage the planning tasks in your day-to-day business. We offer an expert project planning and design service that provides you with professional support.



From the calculation of the heat load and the pipe network to hydraulic balancing and implementation planning, our experienced team supports you with a wide range of services.

### Uponor project planning service for drinking water installation and radiant heating/cooling

- Support through a wide range of services, e.g. implementation planning and calculation of the heat load
- Preparation of detailed requirement analyses and planning documents



DESIGN, CONFIGURATION  
AND PROJECT PLANNING



EXCELLENT  
KNOW HOW



DIGITAL  
SERVICES

# Your contact to Uponor

## We are here for you

### CUSTOMER SERVICE

#### We offer the best advice

- Our experts will be happy to help you with your individual queries.
- Just give us a call:  
+49 9521 690-0



### PERSONALLY

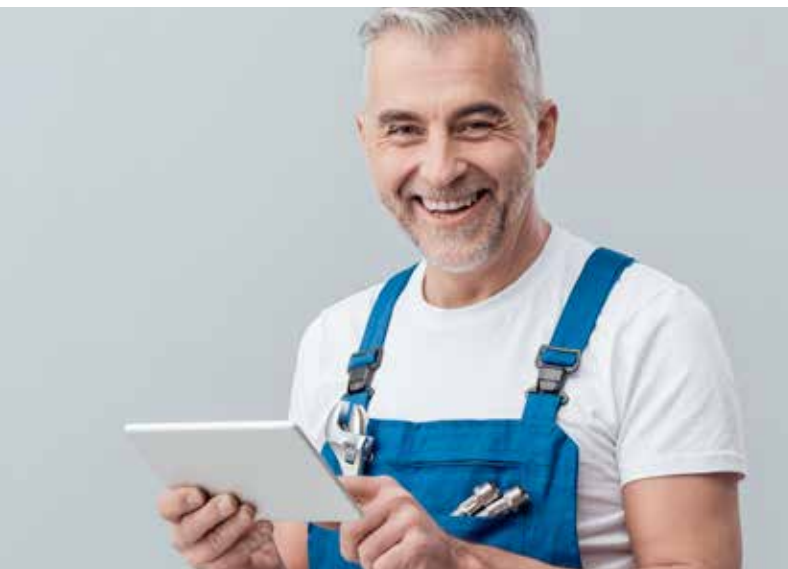
#### We will support you with personal consultation



Please visit [www.uponor.com/get-in-touch](https://www.uponor.com/get-in-touch) to contact Uponor expert close to you

# Uponor installer services

**Uponor is the strong partner at your side.  
We are looking forward to working with you!**



## Customer service

- Commissioning, troubleshooting and repairs in a short time – book your service visit now: [www.uponor.com/get-in-touch](http://www.uponor.com/get-in-touch)

## 10-year declaration of liability

- To obtain the registration form, please contact us: [www.uponor.com/get-in-touch](http://www.uponor.com/get-in-touch)

## Fast availability

- Uponor products are available for immediate delivery from almost every reputable distributor throughout Germany

## Pressing machine check

- Together with our partner Klauke, we offer you a repair and inspection service for pressing machines



# Uponor Online

## Uponor provides support with broad spectrum of digital services

### Tender specifications



Uponor's tender texts are available for immediate use in your tenders and lists of services.

### Documentation



Technical information, installation and operating instructions and much more collected in one central location.

### Practical videos



In our practical tips, professionals show you how it's done.

### Catalogue ordering



The full technical catalogue combines all Uponor's technical documentation in a single volume.



### Trainings

- We are offering different online and offline trainings – please get in touch with us to get more information



# Leading with Water

**Uponor Corporation**

Ilmalantori 4  
00240 Helsinki  
Finland

[www.uponor.com](http://www.uponor.com)